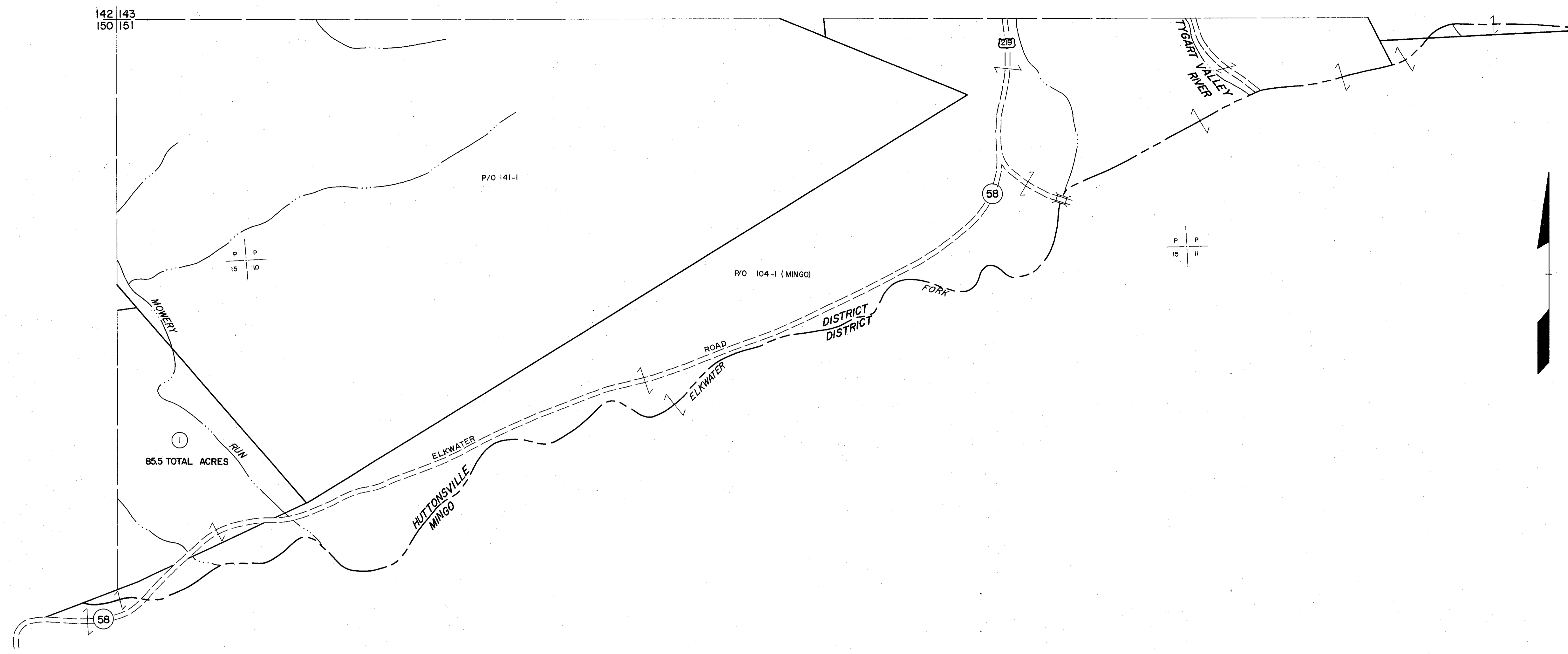


142 | 143
150 | 151

143 | 144
151 | 152



150 | 151

151 | 152

For Tax Purposes Only

Prepared by
MICHAEL BAKER, JR., INC.
Consulting Engineers
Rochester, Pennsylvania

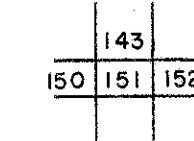
Legend

| | | | |
|-----------------------------|---|------------------------|------|
| Property line | — | Original lot line | — |
| Edge of pavement or roadway | — | Deed lot number | (15) |
| Corporation line | — | Parcel or index number | (59) |
| District line | — | Improvement | o |
| County line | — | Railroad | — |

Revisions

| | | | |
|---|------------------|----|--|
| 1 | 6-30-64 | 9 | |
| 2 | 7-1-69 | 10 | |
| 3 | OGIS 4-15-92 JEB | 11 | |
| 4 | | 12 | |
| 5 | | 13 | |
| 6 | | 14 | |
| 7 | | 15 | |
| 8 | | 16 | |

KEY MAP



RANDOLPH COUNTY
STATE OF WEST VIRGINIA

Office of Assessor

DISTRICT

HUTTONSVILLE

SHEET NO: 151

Date, Aerial Photography: April, 1963 Date, Map: June, 1963
Photo No: 385-15-11 Scale: 1" = 400'