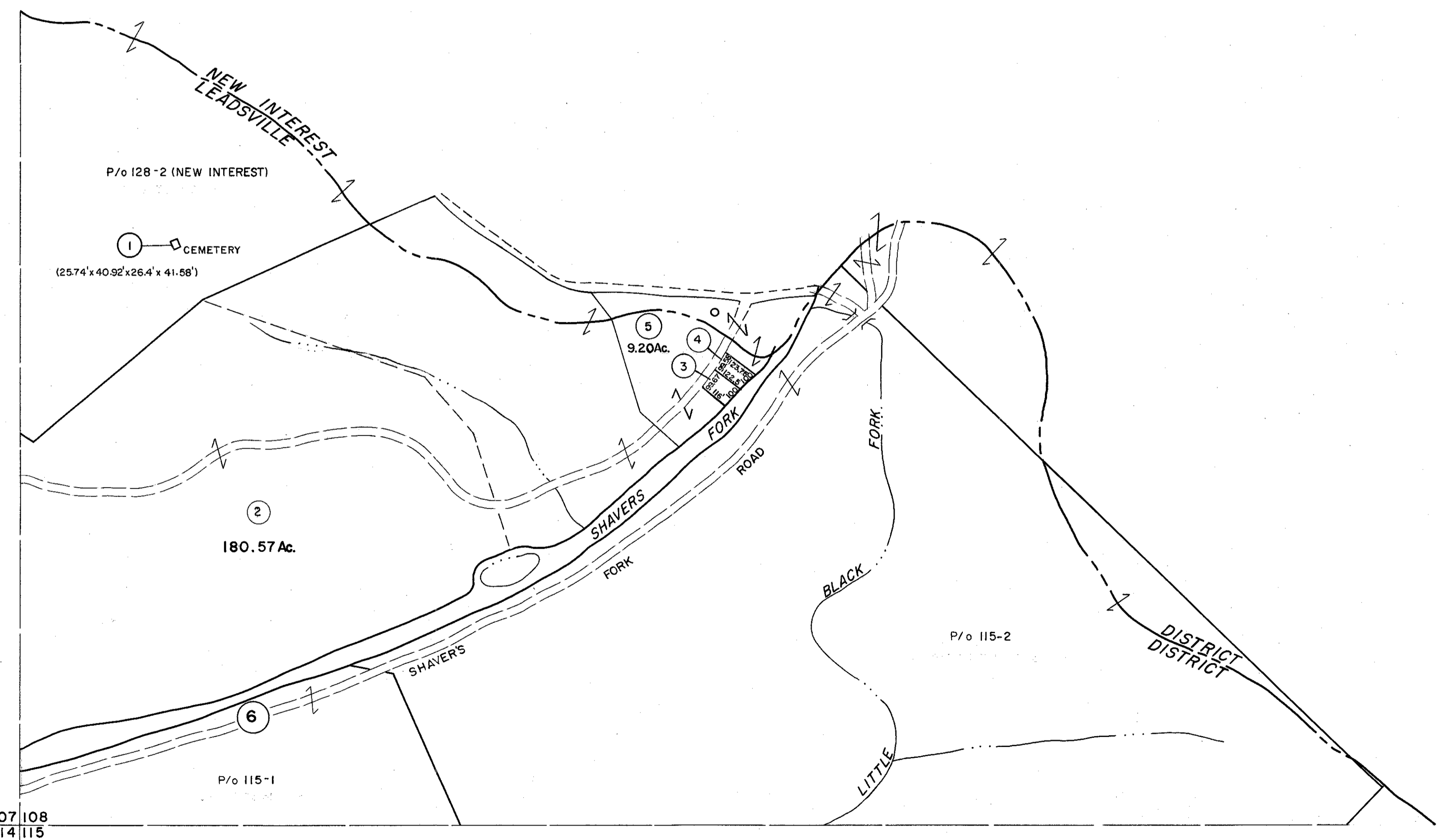


107|108

108|



107 108  
114 115

108  
115

For Tax Purposes Only

Prepared by  
**MICHAEL BAKER, JR., INC.**  
Consulting Engineers  
Rochester, Pennsylvania

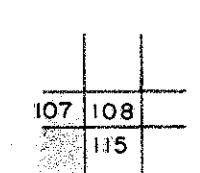
**Legend**

Property line	—————	Original lot line	—————
Edge of pavement or roadway	—————	Deed lot number	(15)
Corporation line	—————	Parcel or index number	(99)
District line	—————	Improvement	○
County line	—————	Railroad	—+—+—+—

**Revisions**

1	6-30-64	9		17	
2	To 7-1-85 C.P.	10		18	
3	Revised to 7-1-87 DE	11		19	
4	Revised to 7-1-89 JEB	12		20	
5	OGIS 4-15-92 JEB	13		21	
6	OGIS 4-20-95 J.E.B.	14		22	
7		15		23	
8		16		24	

KEY MAP



**RANDOLPH COUNTY**  
STATE OF WEST VIRGINIA  
Office of Assessor

DISTRICT

**LEADSVILLE**

SHEET NO: 108

Date, Aerial Photography: April, 1963 Date, Map: June, 1963  
Photo No: 385-5-13 Scale: 1" = 400'