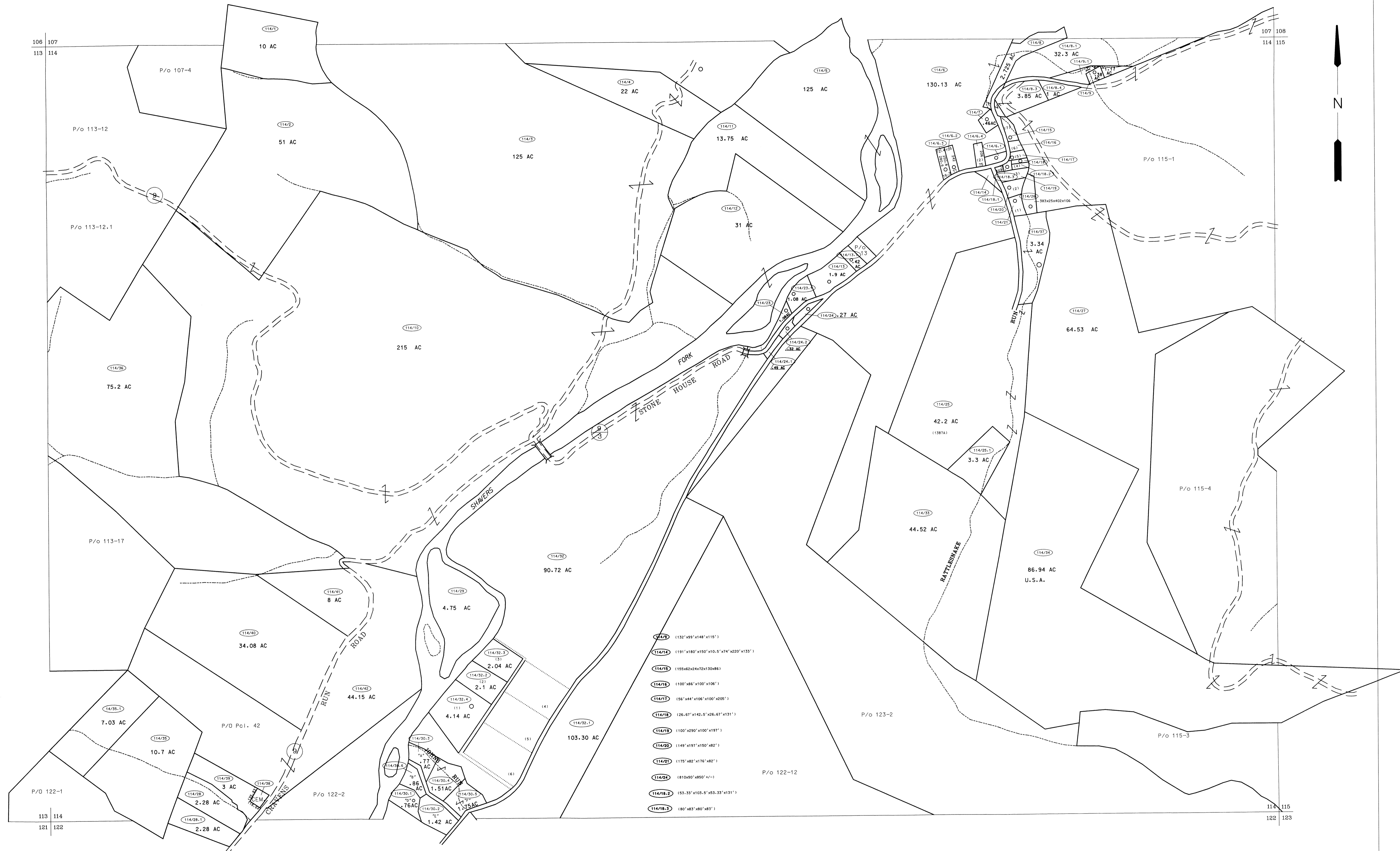
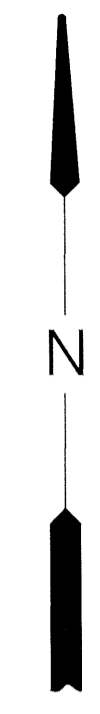


106 107
113 114

107 108
114 115



- 114/27 (132'x95'x148'x115')
- 114/19 (191'x180'x150'x10.5'x74'x220'x133')
- 114/15 (155x62x247x130x86)
- 114/16 (100'x85'x100'x106')
- 114/17 (56'x44'x106'x100'x205')
- 114/18 (26.67'x142.5'x26.67'x131')
- 114/19 (100'x290'x100'x197')
- 114/20 (149'x197'x150'x82')
- 114/21 (175'x82'x176'x82')
- 114/24 (810x50'x850'x-)
- 114/18.2 (53.33'x103.5'x53.33'x131')
- 114/18.3 (80'x83'x80'x83')

For Tax Purposes Only
 Prepared by
 McKenzie Engineering Corporation
 806 Broad Street
 Summersville, WV 26651

LEGEND	
Property line	—————
Edge of pavement or roadway	- - - - -
Corporation line	- · - · -
District line	- - - - -
County line	- - - - -
Original lot line	- - - - - (15)
Deed lot number	Ⓢ
Parcel or index number	Ⓣ
Improvement	○
Railroad	—+—+—+—

REVISIONS	
1	
2	
3	
4	
5	
6	
7	
8	

RESTRICTION

All tax maps created under the provisions of reappraisal legislation are the property of Randolph County West Virginia and the reproduction, copying, distribution or sale of such tax maps or any copies thereof without the written permission of the Randolph County Assessor is prohibited by law.

KEY MAP	
107	114
113	115
122	122

RANDOLPH COUNTY
 STATE OF WEST VIRGINIA
 Office of Assessor

DISTRICT
 LEADSVILLE
 SHEET NO: 114

Date, Aerial Photography: April, 1963
 Photo No: 385-5-13 385-6-15

Date, Map: June, 1963
 Scale: 1" = 400'