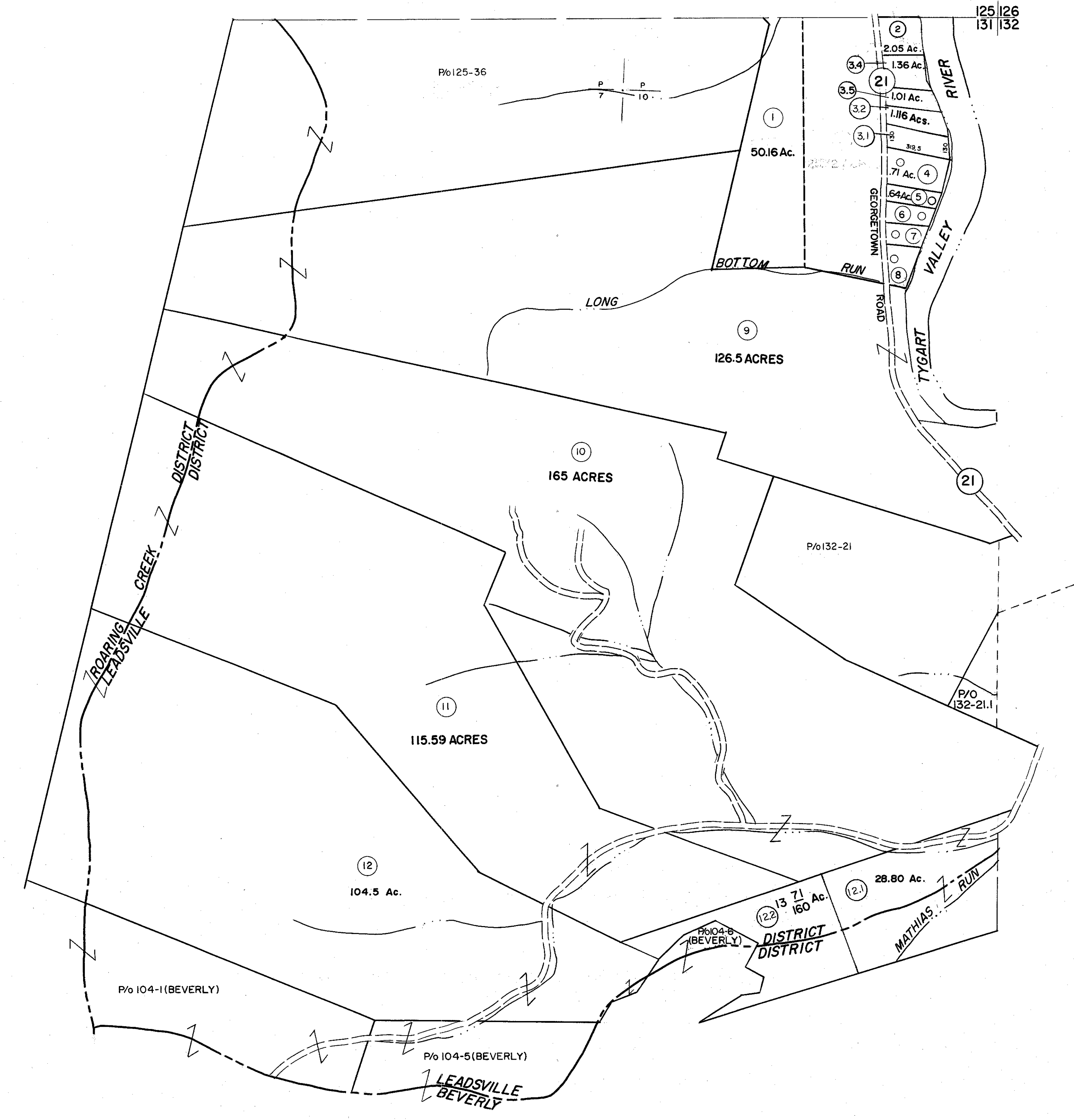


125
131

- ② (121'x260'x108.7'x258')
- ④ 135 ACRES
- ⑤ (100'x280'x100'x259.7')
- ⑥ (100'x259.7'x100'x237')
- ⑦ (100'x237'x100'x206')
- ⑧ (225'x224'x263'x114')



125 126
131 132

131

131 132

For Tax Purposes Only

Prepared by
MICHAEL BAKER, JR., INC.
Consulting Engineers
Rochester, Pennsylvania

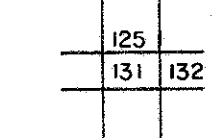
Legend

Property line	-----	Original lot line	-----
Edge of pavement or roadway	-----	Deed lot number	(15)
Corporation line	-----	Parcel or index number	(16)
District line	-----	Improvement	(17)
County line	-----	Railroad	(18)

Revisions

1	6-30-64	2	O.G.I.S. 3-15-94	J.E.B.	17
2	REV. TO 7/80 DR. 4/BINS	10	O.G.I.S. 9-1-96	J.E.B.	18
3	7-1-85	11			19
4	To 7-1-85 C.P.	12			20
5	Revised to 7-1-85	13			21
6	OGIS 3/3/91	14			22
7	OGIS 4-15-92	15			23
8	OGIS 4-26-93	16			24

KEY MAP



RANDOLPH COUNTY

STATE OF WEST VIRGINIA

Office of Assessor

DISTRICT

LEADSVILLE

SHEET NO:131

Date, Aerial Photography: April, 1963
Photo No: 385-7-11

Date, Map: June, 1963
Scale: 1" = 400'