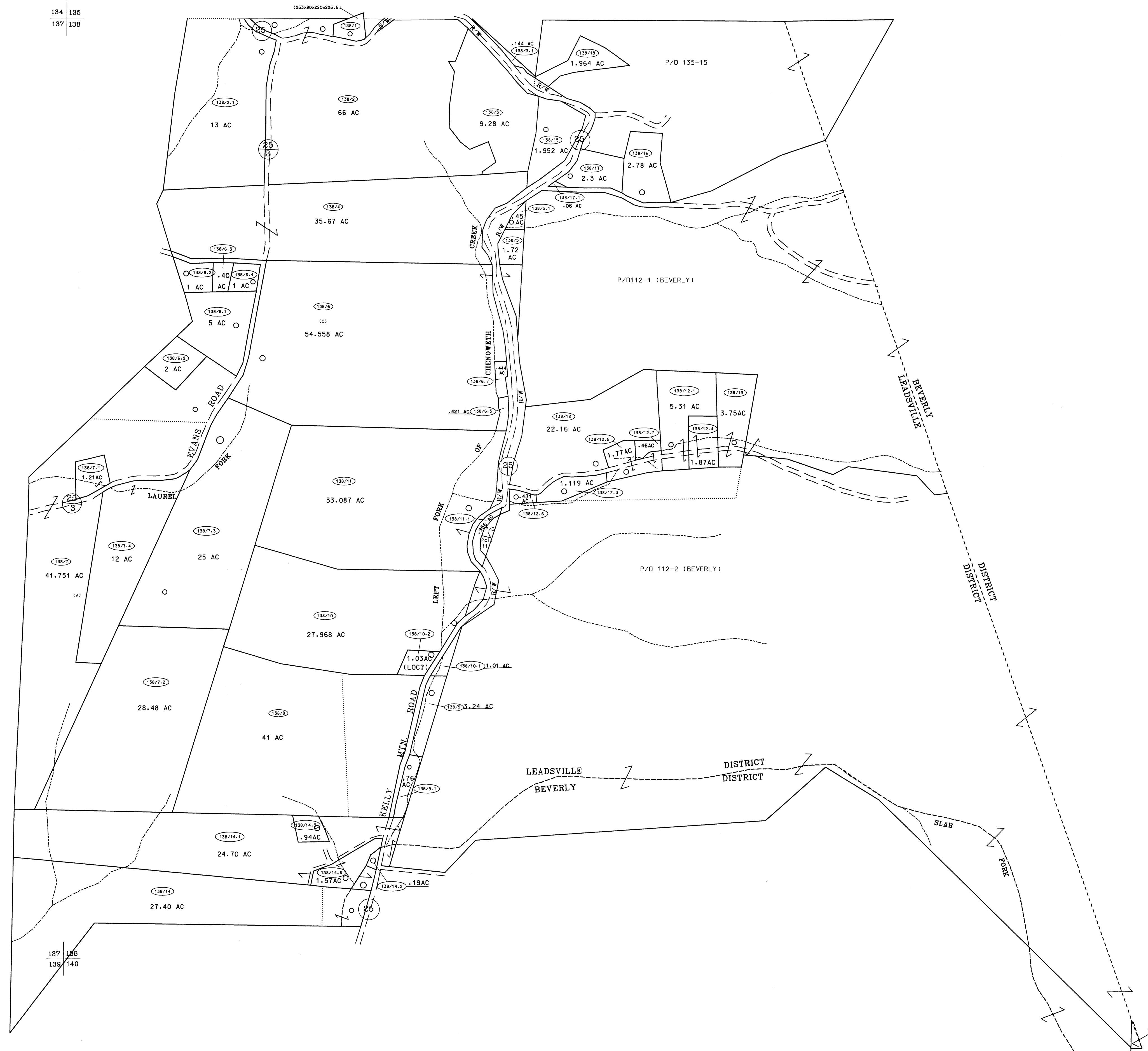
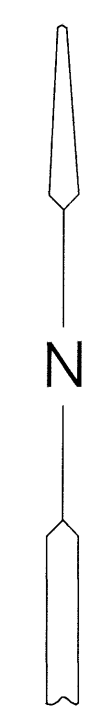
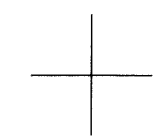


134 135  
137 138



137 136  
139 140

138  
140

For Tax Purposes Only  
Prepared by  
McKenzie Engineering Corporation  
806 Broad Street  
Summersville, WV 26651

LEGEND	
Property line	Original line
Edge of pavement or roadway	Deed lot number (15)
Corporation line	Parcel or index number (99)
District line	Improvement
County line	Railroad

REVISIONS	
1	
2	
3	
4	
5	
6	
7	
8	

RESTRICTION  
All tax maps created under the provisions of reappraisal legislation are the property of Randolph County West Virginia and the reproduction, copying, distribution or sale of such tax maps or any copies thereof without the written permission of the Randolph County Assessor is prohibited by law.

KEY MAP	
135	
137 138	
140	

RANDOLPH COUNTY  
STATE OF WEST VIRGINIA  
Office of Assessor

DISTRICT  
LEADVILLE  
SHEET NO: 138  
Date, Aerial Photography: April, 1963  
Photo No: 385-7A-11  
Date, Map: June, 1963  
Scale: 1" = 400'