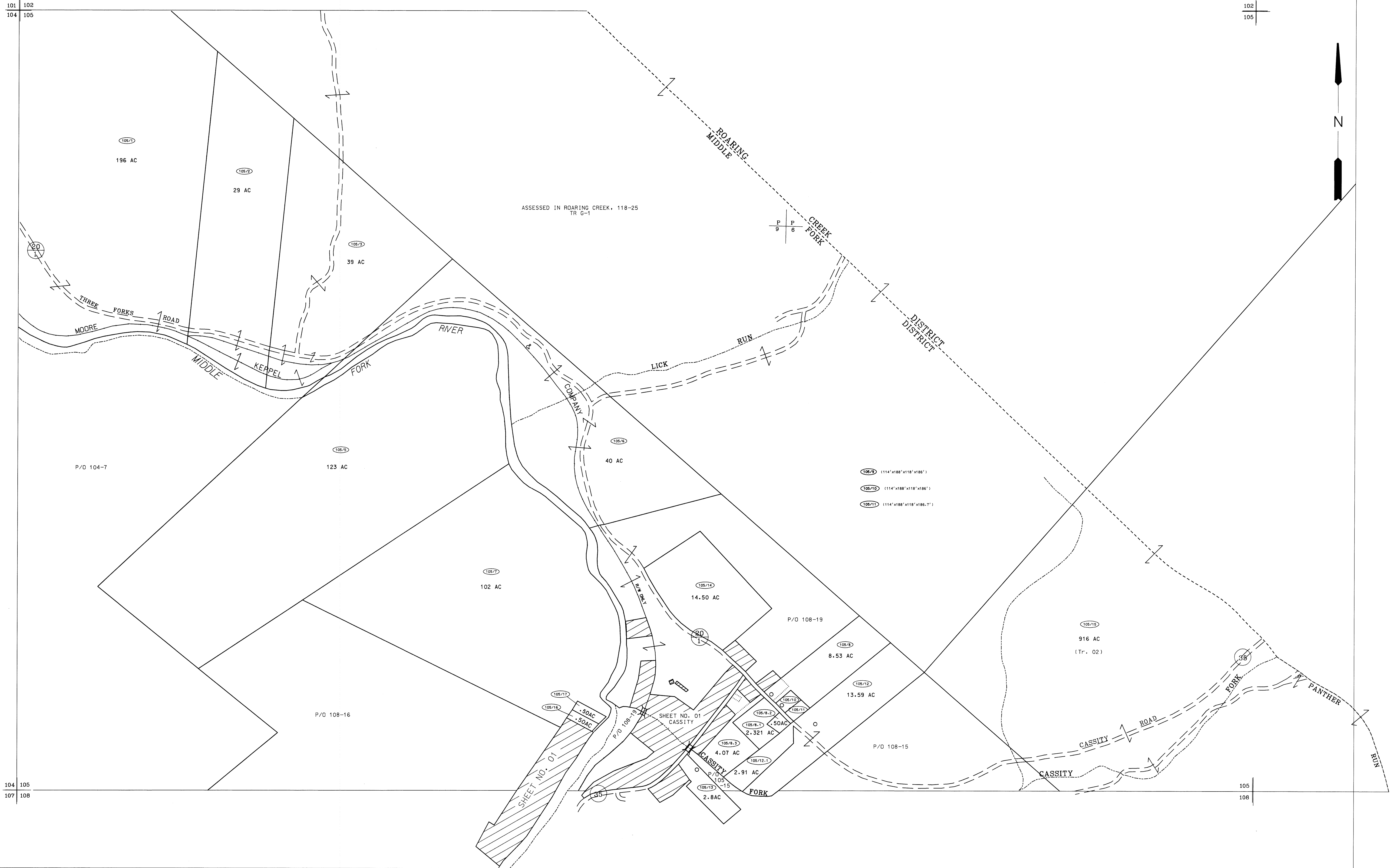


101 102  
104 105

102  
105

104 105  
107 108

105  
108



ASSESSED IN ROARING CREEK, 118-25  
TR G-1

P  
9 6

- (108/8) (114'x188'x118'x186')
- (108/10) (114'x188'x118'x186')
- (108/11) (114'x188'x118'x186.7')

For Tax Purposes Only  
 Prepared by  
 McKenzie Engineering Corporation  
 806 Broad Street  
 Summersville, WV 26651

LEGEND	
Property line	—
Edge of pavement or roadway	—
Corporation line	—
District line	—
County line	—
Original lot line	- - - - -
Deed lot number	(15)
Parcel or index number	(99)
Improvement	o
Railroad	—+—+—+—

REVISIONS	
1	
2	
3	
4	
5	
6	
7	
8	

RESTRICTION

All tax maps created under the provisions of reappraisal legislation are the property of Randolph County West Virginia and the reproduction, copying, distribution or sale of such tax maps or any copies thereof without the written permission of the Randolph County Assessor is prohibited by law.

KEY MAP	
102	
104 105	
108	

RANDOLPH COUNTY  
 STATE OF WEST VIRGINIA  
 Office of Assessor

DISTRICT  
 MIDDLE FORK  
 SHEET NO: 105  
 Date, Aerial Photography: April, 1963  
 Photo No: 385-9-6  
 Date, Map: June, 1963  
 Scale: 1" = 400'