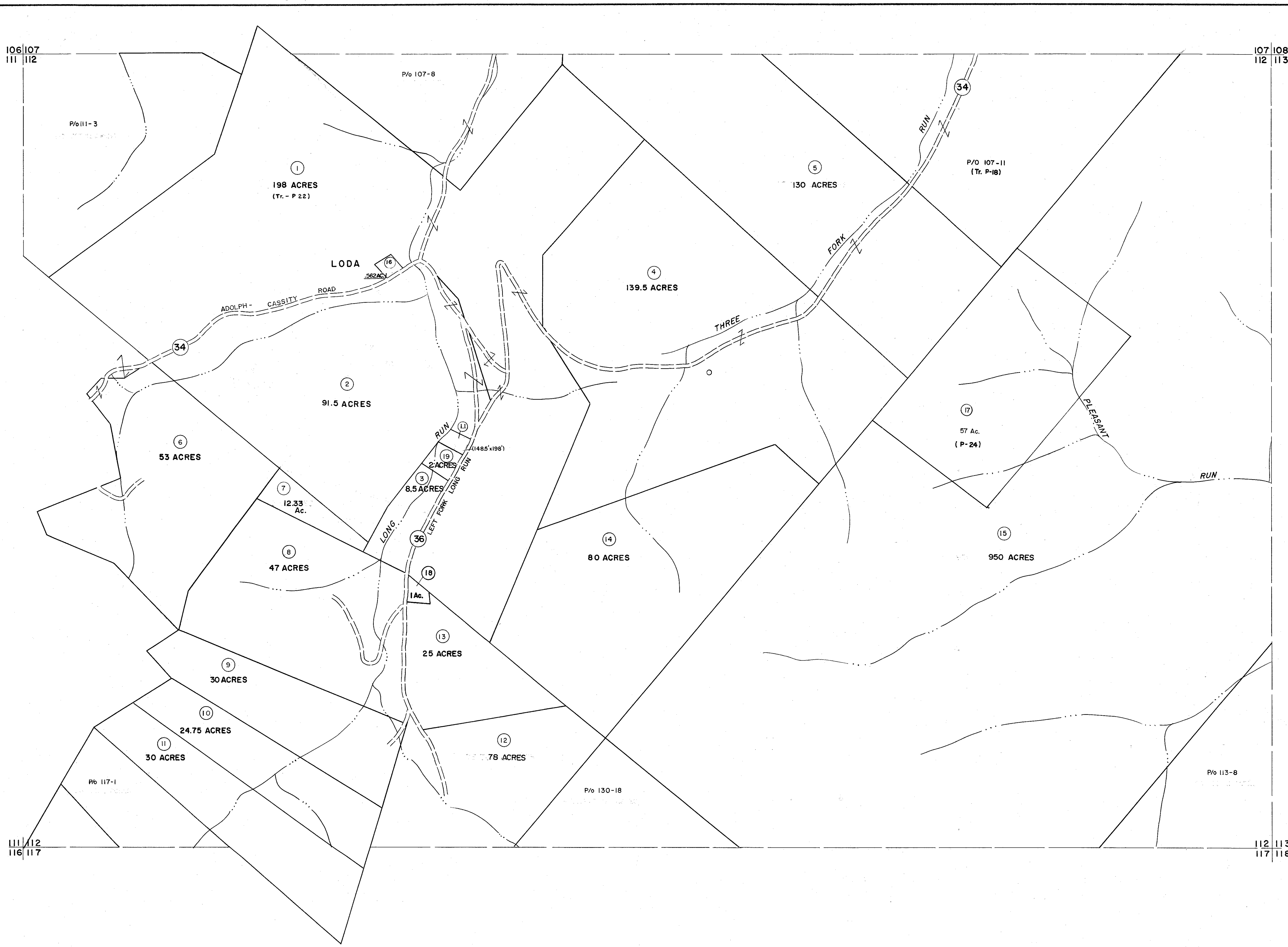


106 | 107  
111 | 112

107 | 108  
112 | 113

111 | 112  
116 | 117

112 | 113  
117 | 118



For Tax Purposes Only

Prepared by  
MICHAEL BAKER, JR., INC.  
Consulting Engineers  
Rochester, Pennsylvania

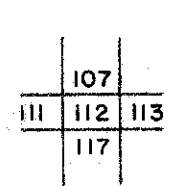
Legend

|                             |   |                        |      |
|-----------------------------|---|------------------------|------|
| Property line               | — | Original lot line      | —    |
| Edge of pavement or roadway | — | Deed lot number        | (15) |
| Corporation line            | — | Parcel or index number | (99) |
| District line               | — | Improvement            | o    |
| County line                 | — | Railroad               | —    |

Revisions

|   |                      |    |  |
|---|----------------------|----|--|
| 1 | 6-30-64              | 9  |  |
| 2 | 7-1-83               | 10 |  |
| 3 | Adopted 1984 LES     | 11 |  |
| 4 | REV. TO 7-1-87 C.P.  | 12 |  |
| 5 | REV. TO 7-1-87 NCS   | 13 |  |
| 6 | OGIS 3/3/91          | 14 |  |
| 7 | OGIS 4-15-92 JEB     | 15 |  |
| 8 | SLS INC.-J.W.M. 4/97 | 16 |  |

KEY MAP



RANDOLPH COUNTY  
STATE OF WEST VIRGINIA  
Office of Assessor

DISTRICT

MIDDLE FORK

SHEET NO: 112

Date, Aerial Photography: April, 1963 Date, Map: June, 1963  
Photo No: 385-10-4 Scale: 1" = 400'