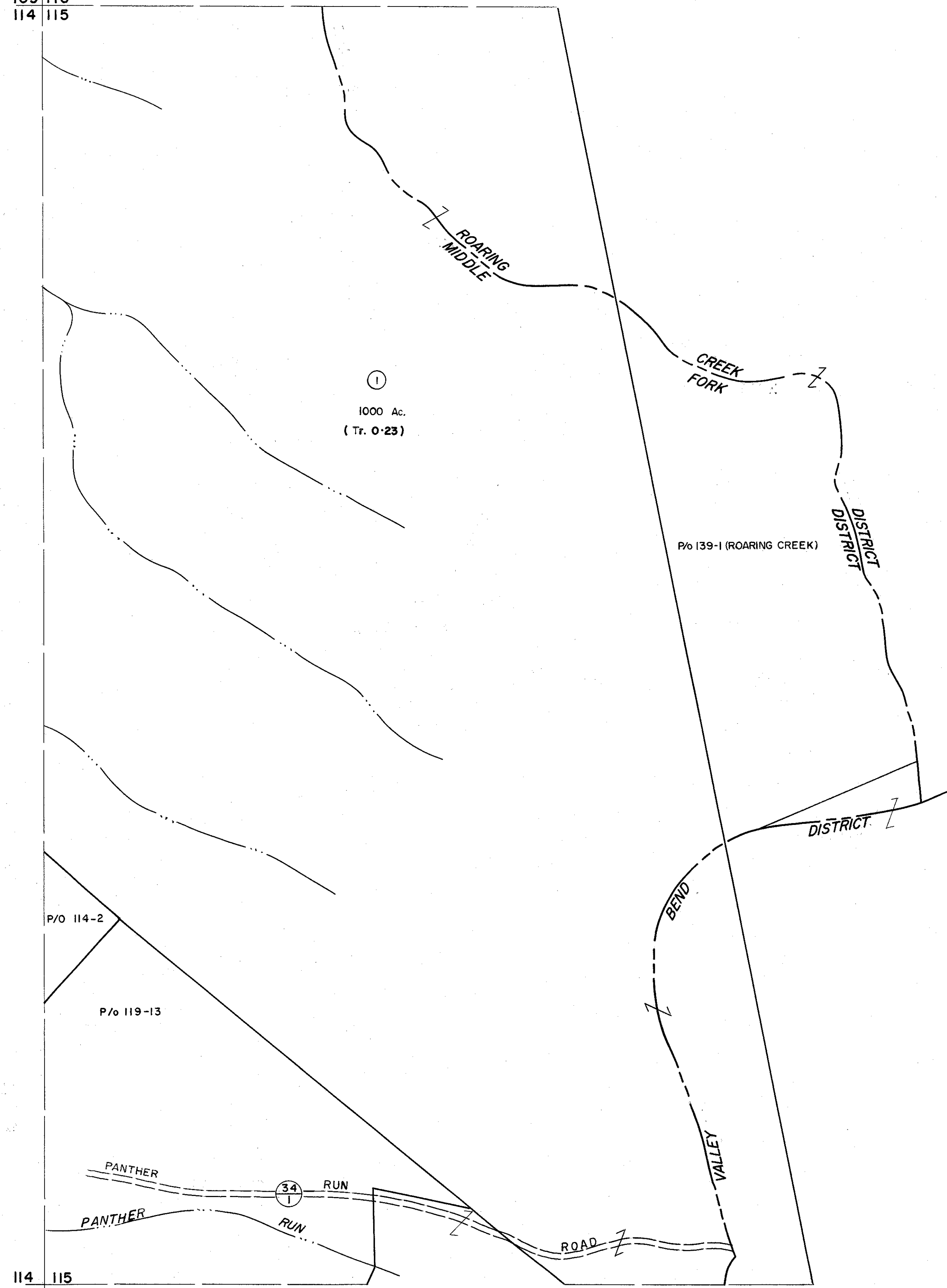


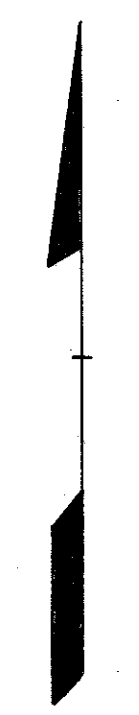
109 | 110
114 | 115

110 |
115 |



114 | 115
119 | 120

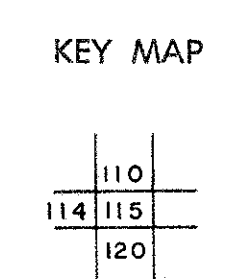
115 |
120 |



For Tax Purposes Only
 Prepared by
MICHAEL BAKER, JR., INC.
 Consulting Engineers
 Rochester, Pennsylvania

Legend	
Property line	Original lot line
Edge of pavement or roadway	Deed lot number
Corporation line	Parcel or index number
District line	Improvement
County line	Railroad

Revisions	
1	6-30-64
2	7-1-64
3	7-1-64
4	0915 4-15-92 JEB
5	
6	
7	
8	



RANDOLPH COUNTY
 STATE OF WEST VIRGINIA
 Office of Assessor

DISTRICT	
MIDDLE FORK	
SHEET NO: 115	
Date, Aerial Photography: April, 1963	Date, Map: June, 1963
Photo No: 385-10-8	Scale: 1" = 400'