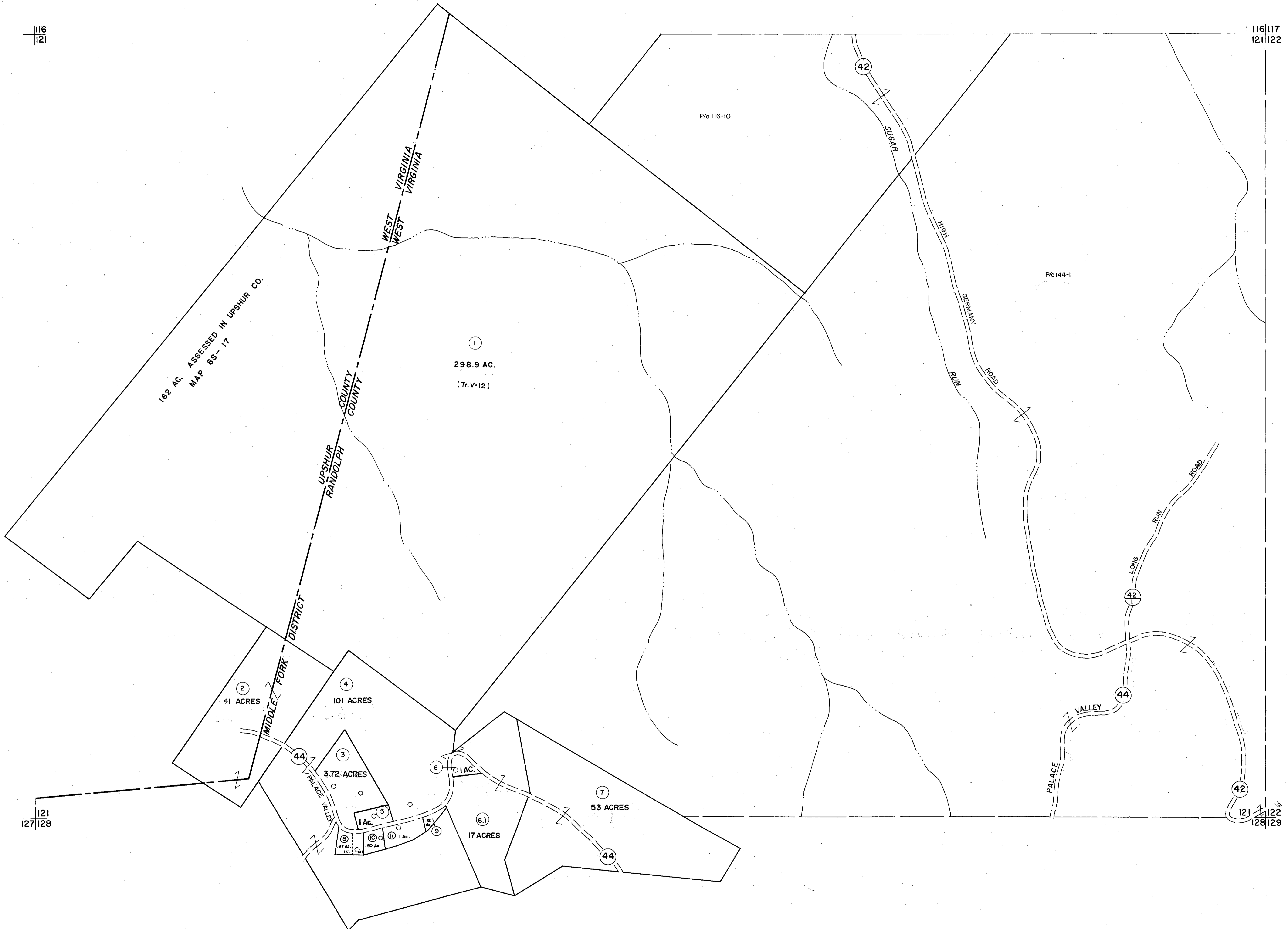


116
121

116
117
121
122



For Tax Purposes Only

Prepared by
MICHAEL BAKER, JR., INC.
Consulting Engineers
Rochester, Pennsylvania

Legend	
Property line	Original lot line
Edge of pavement or roadway	Deed lot number
Corporation line	Parcel or index number
District line	Improvement
County line	Railroad

Revisions	
1	6-30-64
2	July 1967
3	Revised to 7-1-85 C.P.
4	To 7-1-86 C.P.
5	Revised to 7-1-87
6	OGIS 4-15-92 JEB
7	OGIS 4-26-93 JEB
8	SLS INC.-J.W.M. 4/97

KEY MAP

RANDOLPH COUNTY
STATE OF WEST VIRGINIA
Office of Assessor

DISTRICT
MIDDLE FORK

SHEET NO:121

Date, Aerial Photography: April, 1963
Photo No: 385-11-4
Scale: 1"=400'

Date, Map: June, 1963
Scale: 1"=400'