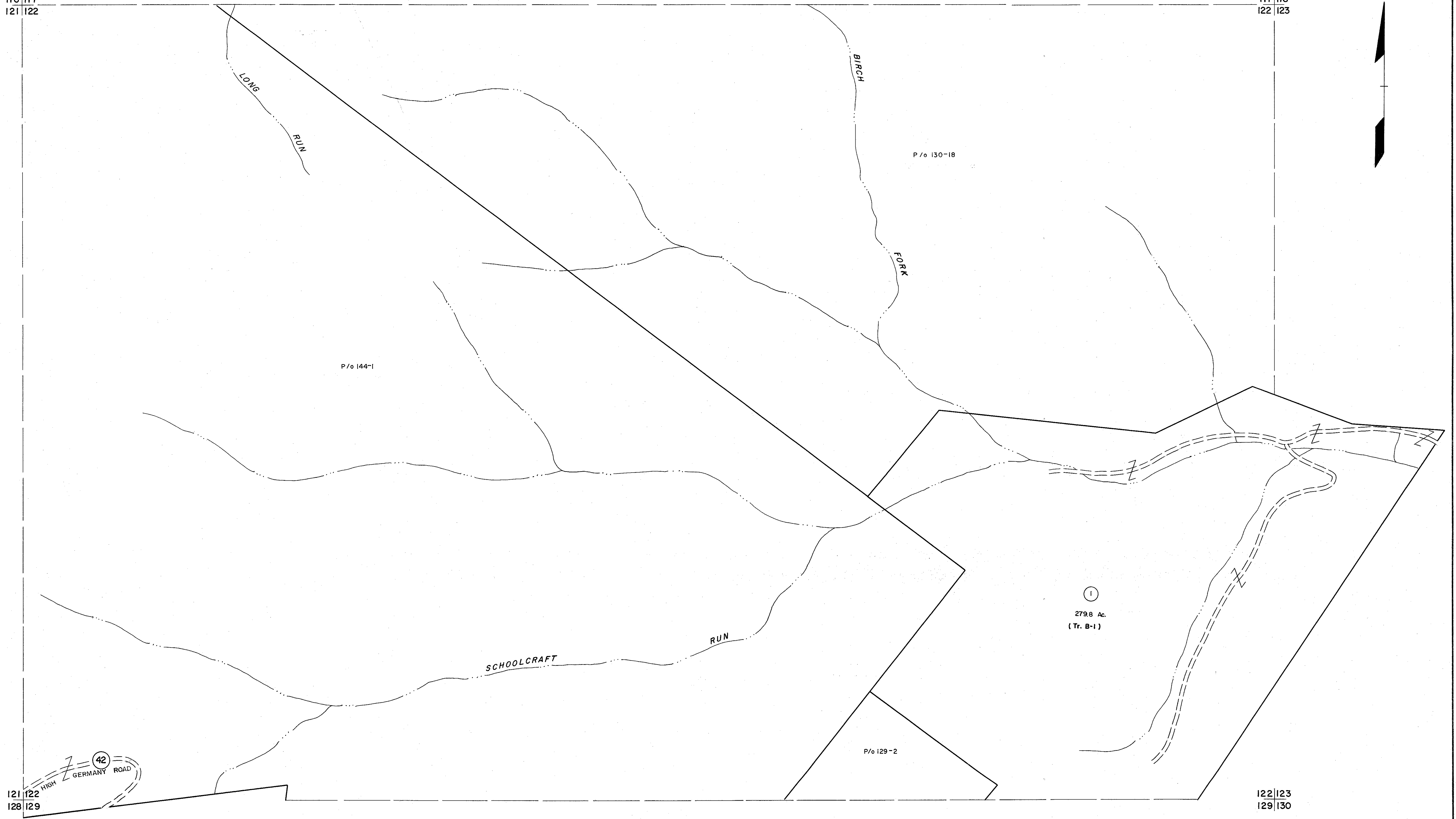


116 117  
121 122

117 118  
122 123



121 122  
128 129

122 123  
129 130

For Tax Purposes Only

Prepared by  
MICHAEL BAKER, JR., INC.  
Consulting Engineers  
Rochester, Pennsylvania

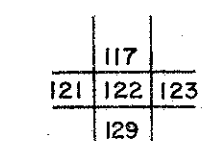
Legend

Property line	—	Original lot line	—
Edge of pavement or roadway	—	Deed lot number	(15)
Corporation line	—	Parcel or index number	(29)
District line	—	Improvement	o
County line	—	Railroad	o

Revisions

1	6-30-64	9		17	
2	Revised to 7-20-64	10		18	
3	Revised to 7-20-64	11		19	
4	Revised to 7-1-67	12		20	
5	O.G.I.S. 4-15-92 J.E.B.	13		21	
6	O.G.I.S. 3-15-94 J.E.B.	14		22	
7		15		23	
8		16		24	

KEY MAP



RANDOLPH COUNTY  
STATE OF WEST VIRGINIA  
Office of Assessor

DISTRICT

MIDDLE FORK

SHEET NO: 122

Date, Aerial Photography: April, 1963 Date, Map: June, 1963  
Photo No: 385-11-6 Scale: 1" = 400'  
385-12-7