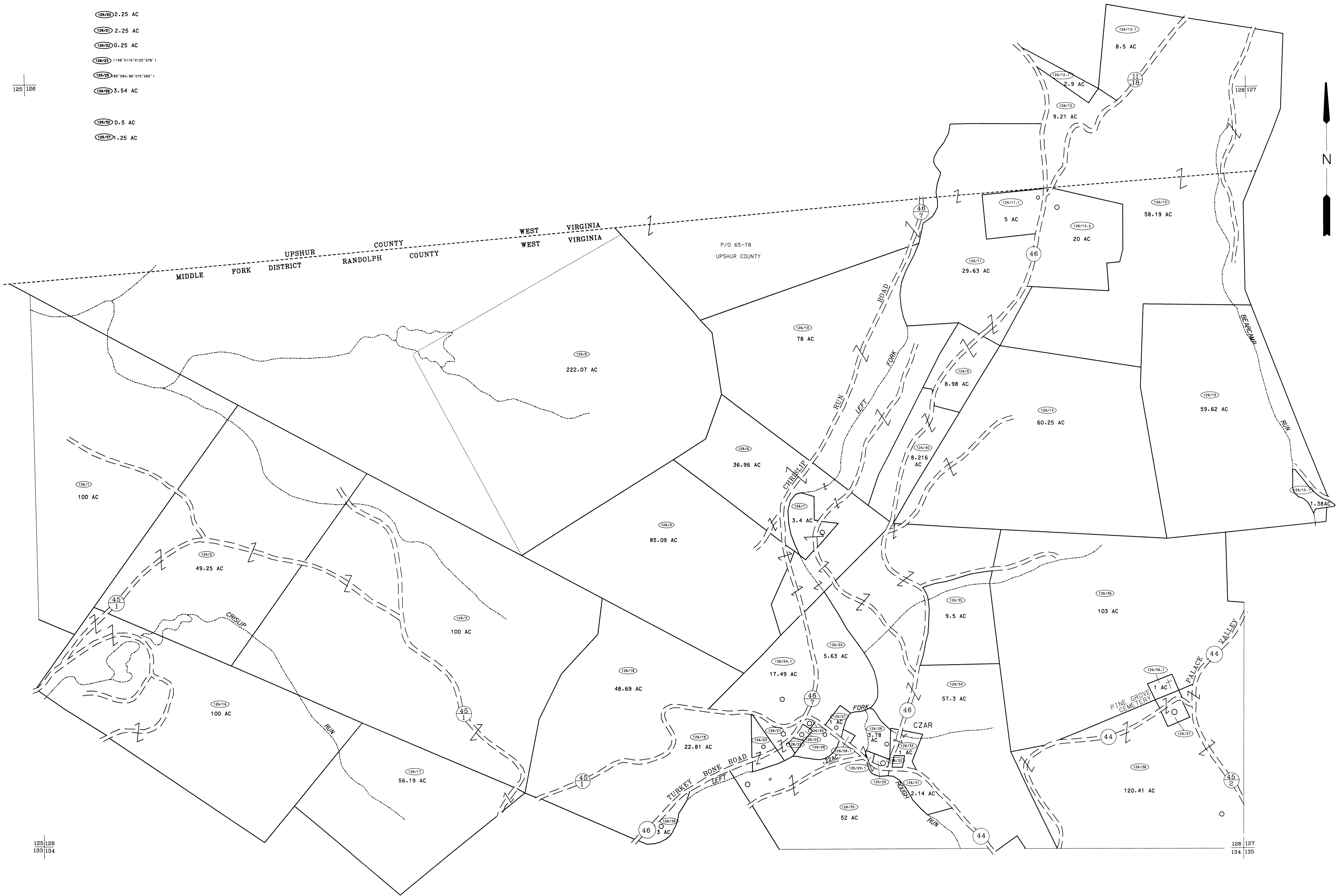
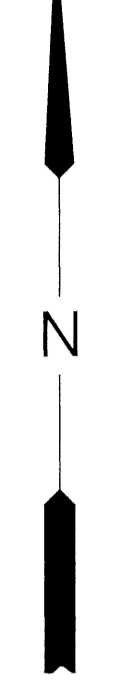


- (126/25) 2.25 AC
- (126/21) 2.25 AC
- (126/22) 0.25 AC
- (126/23) (148'x115'x125'x78')
- (126/25) 85'x84.96'x75'x85')
- (126/26) 3.54 AC
- (126/23) 0.5 AC
- (126/27) 1.25 AC

125 126



125 126  
133 134

126 127  
134 135

For Tax Purposes Only

Prepared by  
 McKenzie Engineering Corporation  
 806 Broad Street  
 Summersville, WV 26651

LEGEND

Property line	—————	Original lot line	-----
Edge of pavement or roadway	-----	Deed lot number	(15)
Corporation line	-----	Parcel or index number	⊙
District line	-----	Improvement	○
County line	-----	Railroad	—+—

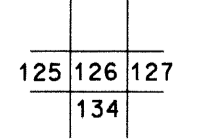
REVISIONS

1	
2	
3	
4	
5	
6	
7	
8	

RESTRICTION

All tax maps created under the provisions of reappraisal legislation are the property of Randolph County West Virginia and the reproduction, copying, distribution or sale of such tax maps or any copies thereof without the written permission of the Randolph County Assessor is prohibited by law.

KEY MAP



RANDOLPH COUNTY  
 STATE OF WEST VIRGINIA  
 Office of Assessor

DISTRICT

MIDDLE FORK  
 SHEET NO: 126

Date, Aerial Photography: Apr 11, 1963  
 Photo No: 385-12-3  
 Date, Map: June, 1963  
 Scale: 1" = 400'