

132 133
139 140

133 134
140 141

139 140
146 147

140 141
147 148

P/O 139-1

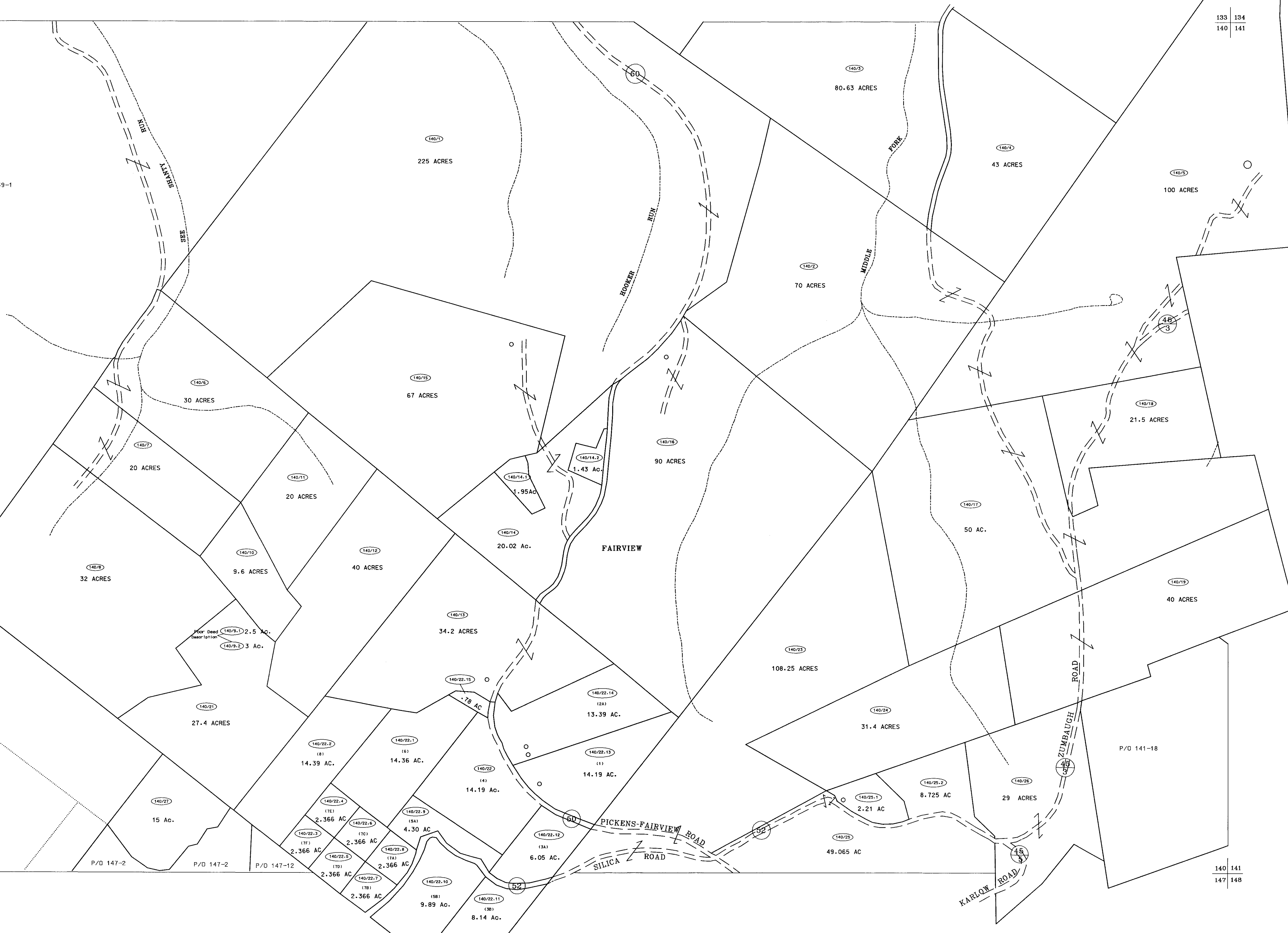
P/O 147-1

P/O 147-2

P/O 147-2

P/O 147-2

P/O 141-18



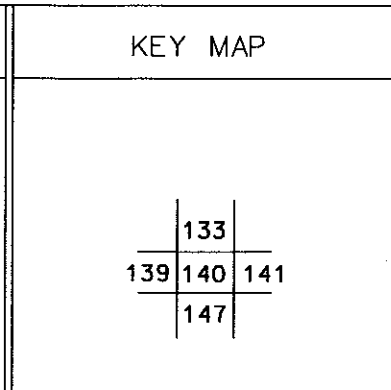
For Tax Purposes Only
 Prepared by
 McKenzie Engineering Corporation
 806 Broad Street
 Summersville, WV 26651

LEGEND	
Property line	Original lot line
Edge of pavement or roadway	Dead lot number (15)
Corporation line	Parcel or index number (99)
District line	Improvement
County line	Railroad

REVISIONS
1
2
3
4
5
6
7
8

RESTRICTION

All tax maps created under the provisions of reappraisal legislation are the property of Randolph County West Virginia and the reproduction, copying, distribution or sale of such tax maps or any copies thereof without the written permission of the Randolph County Assessor is prohibited by law.



RANDOLPH COUNTY
 STATE OF WEST VIRGINIA
 Office of Assessor

DISTRICT
 MIDDLE FORK
 SHEET NO: 140
 Date, Aerial Photography: April, 1963
 Photo No: 385-13-5
 Date, Map: June, 1963
 Scale: 1" = 400'