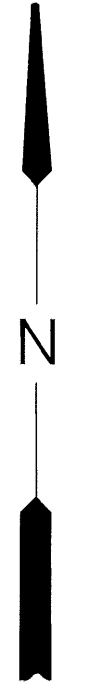
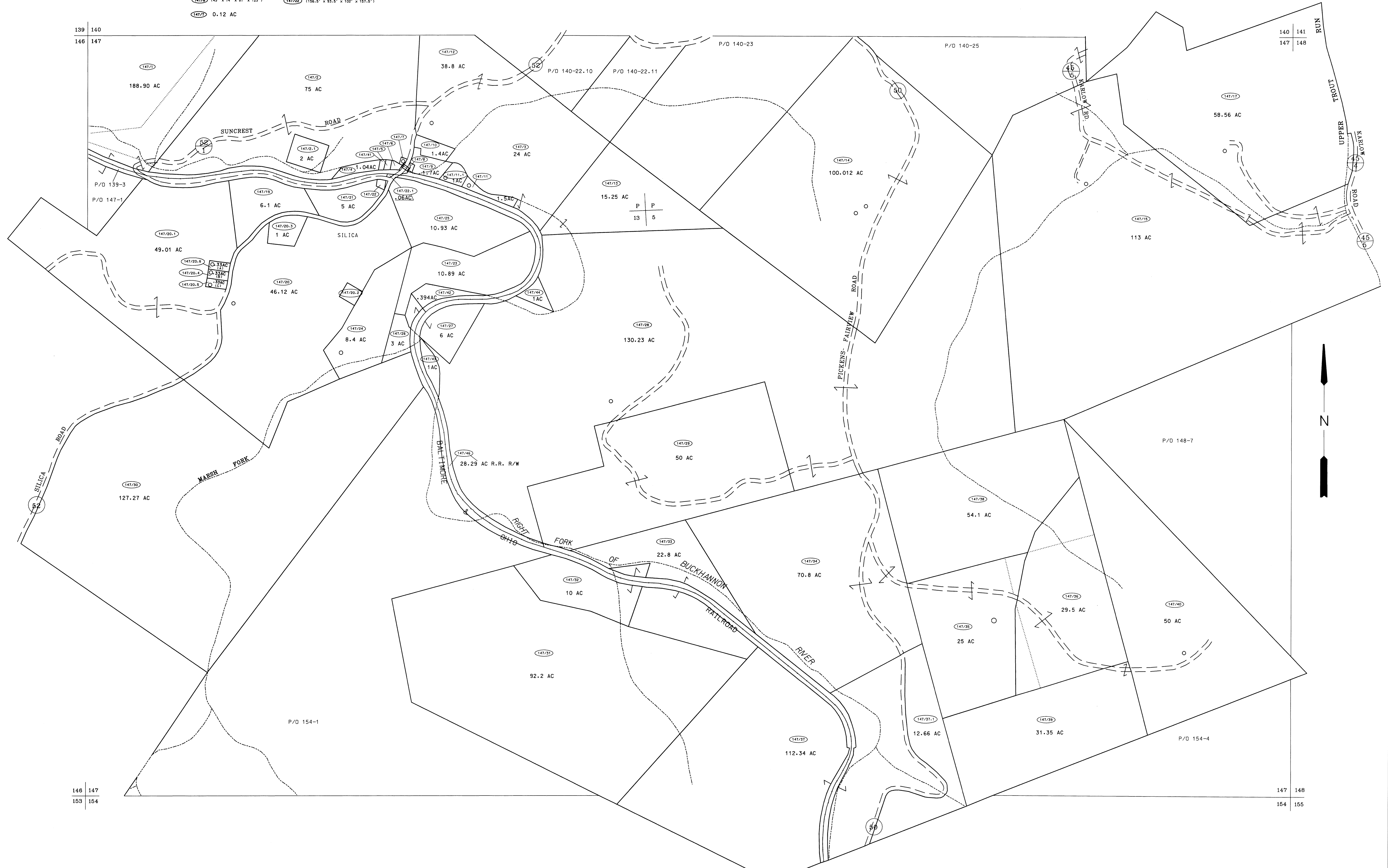


- (147/5) (50' x 100')
- (147/6) (50' x 40')
- (147/8) (43' x 74' x 97' x 123')
- (147/22) (156.5' x 93.5' x 102' x 157.5')
- (147/7) 0.12 AC



For Tax Purposes Only

Prepared by
 McKenzie Engineering Corporation
 806 Broad Street
 Summersville, WV 26651

LEGEND

Property line	—————	Original lot line	-----
Edge of pavement or roadway	-----	Deed lot number	(15)
Corporation line	-----	Parcel or index number	(99)
District line	-----	Improvement	o
County line	-----	Railroad	—+—+—+—

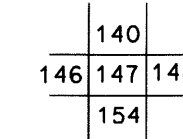
REVISIONS

1	6/21/02	PKY
2		
3		
4		
5		
6		
7		
8		

RESTRICTION

All tax maps created under the provisions of reappraisal legislation are the property of Randolph County West Virginia and the reproduction, copying, distribution or sale of such tax maps or any copies thereof without the written permission of the Randolph County Assessor is prohibited by law.

KEY MAP



RANDOLPH COUNTY
 STATE OF WEST VIRGINIA
 Office of Assessor

DISTRICT

MIDDLE FORK
 SHEET NO: 147

Date, Aerial Photography: April, 1963
 Photo No:
 Date, Map: June, 1963
 Scale: 1" = 400'