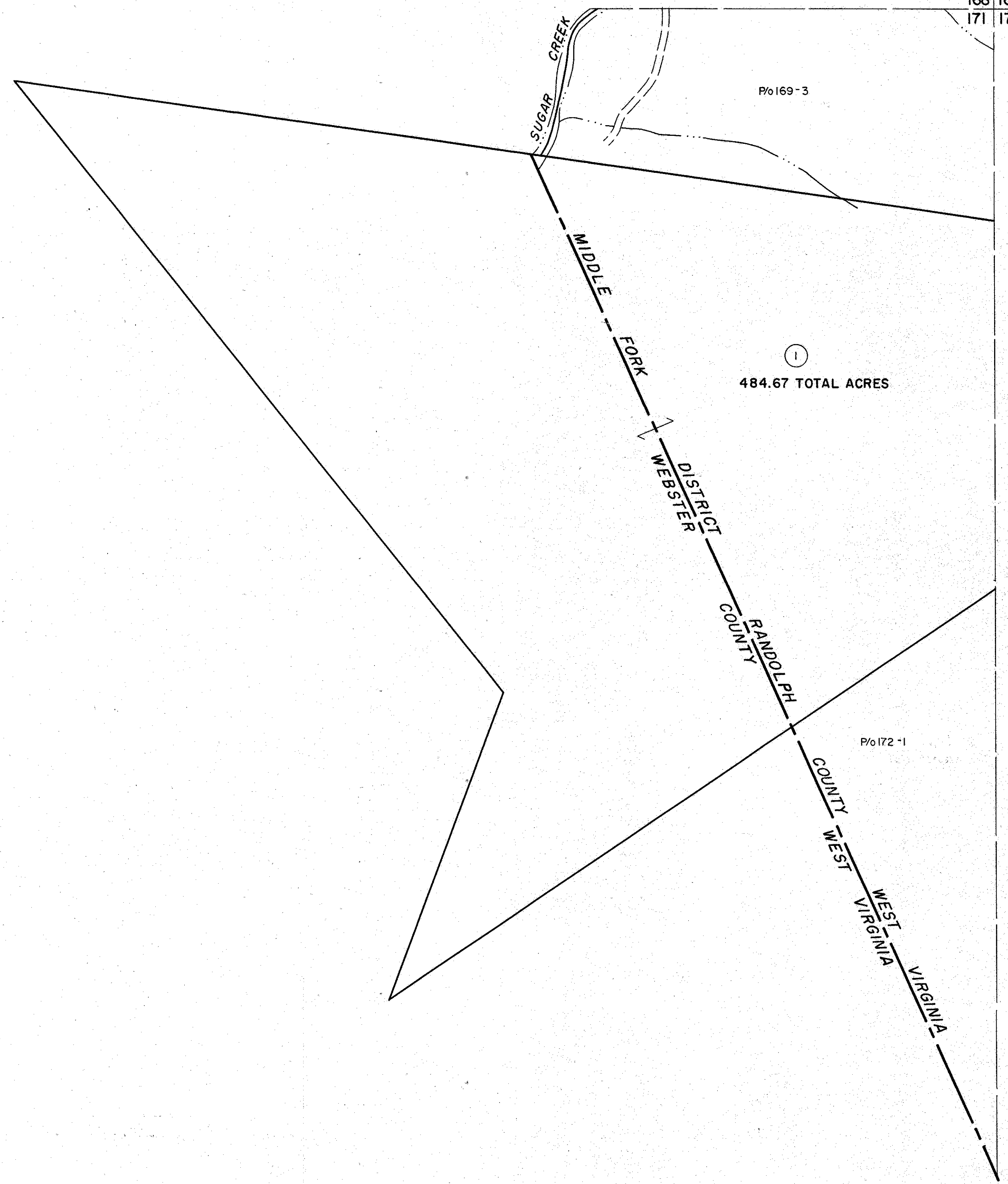


168  
171

168 169  
171 172



171

171 172  
174

For Tax Purposes Only

Prepared by  
MICHAEL BAKER, JR., INC.  
Consulting Engineers  
Rochester, Pennsylvania

Legend

|                             |       |                        |       |
|-----------------------------|-------|------------------------|-------|
| Property line               | ————— | Original lot line      | ----- |
| Edge of pavement or roadway | ———   | Deed lot number        | (15)  |
| Corporation line            | ----- | Parcel or index number | (19)  |
| District line               | ----- | Improvement            | o     |
| County line                 | ----- | Railroad               | +     |

Revisions

|   |                        |    |    |
|---|------------------------|----|----|
| 1 | 6-30-64                | 9  | 17 |
| 2 | Revised to 7-1-67 J.F. | 10 | 18 |
| 3 |                        | 11 | 19 |
| 4 |                        | 12 | 20 |
| 5 |                        | 13 | 21 |
| 6 |                        | 14 | 22 |
| 7 |                        | 15 | 23 |
| 8 |                        | 16 | 24 |

KEY MAP

168  
171 172

RANDOLPH COUNTY  
STATE OF WEST VIRGINIA  
Office of Assessor

DISTRICT

MIDDLE FORK

SHEET NO: 171

Date, Aerial Photography: April 1963 Date, Map: June 1963  
Photo No: 385-16-4 Scale: 1" = 400'