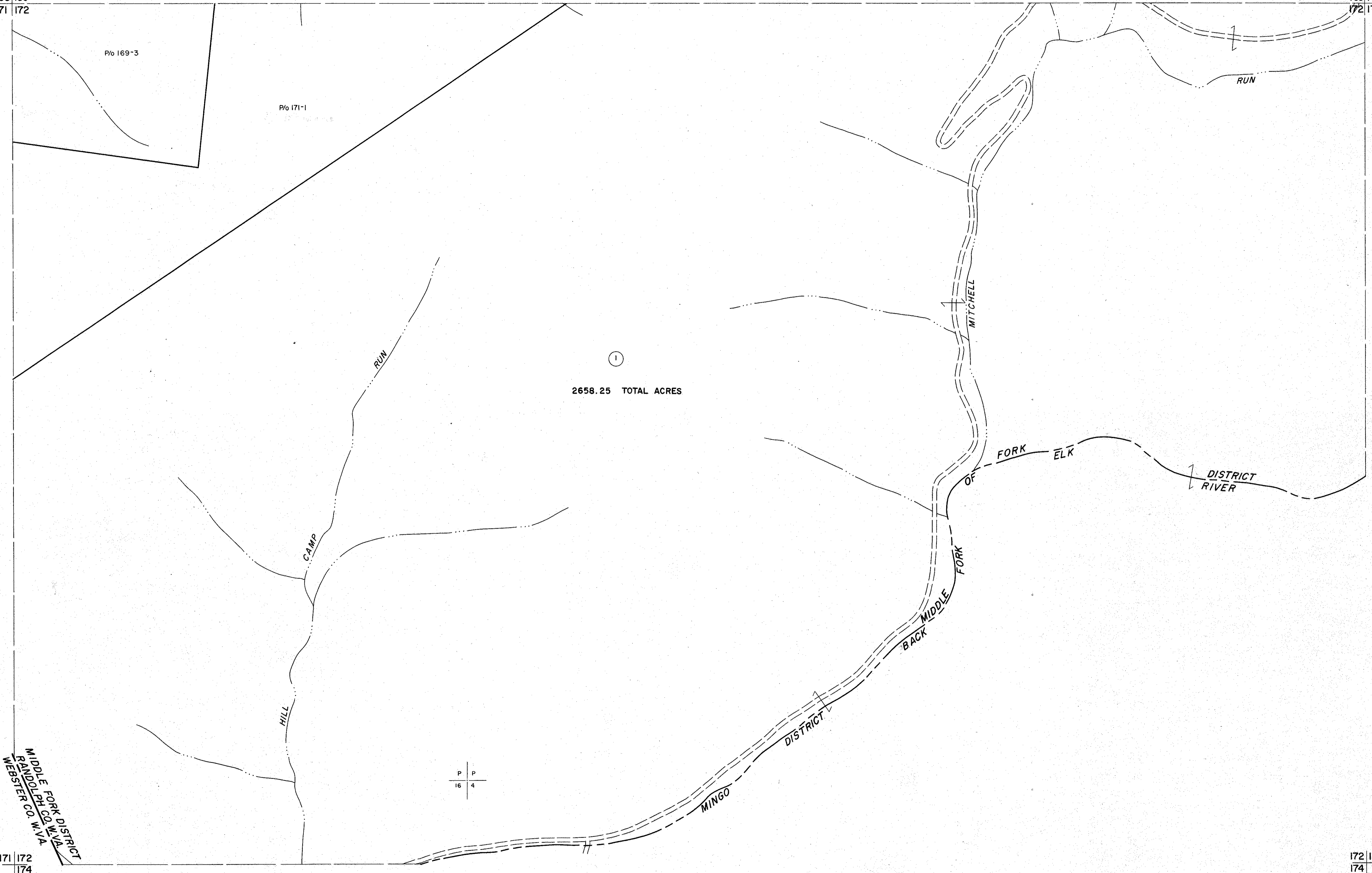


168 | 169
171 | 172

169 | 170
172 | 173



MIDDLE FORK DISTRICT
 RANDOLPH CO. W. VA.
 WEBSTER CO. W. VA.

P P
 16 4

For Tax Purposes Only
 Prepared by
 MICHAEL BAKER, JR., INC.
 Consulting Engineers
 Rochester, Pennsylvania

Legend	
Property line	Original lot line
Edge of pavement or roadway	Deed lot number
Corporation line	Parcel or index number
District line	Improvement
County line	Railroad

Revisions			
1	6-30-66	9	17
2	To 7-1-86 C.P.	10	18
3	Revised to 7-1-87	11	19
4		12	20
5		13	21
6		14	22
7		15	23
8		16	24

KEY MAP

RANDOLPH COUNTY
 STATE OF WEST VIRGINIA
 Office of Assessor

DISTRICT
MIDDLE FORK
 SHEET NO: 172
 Date, Aerial Photography: April 1963 Date, Map: June 1963
 Photo No: 385-16-5 Scale: 1" = 400'