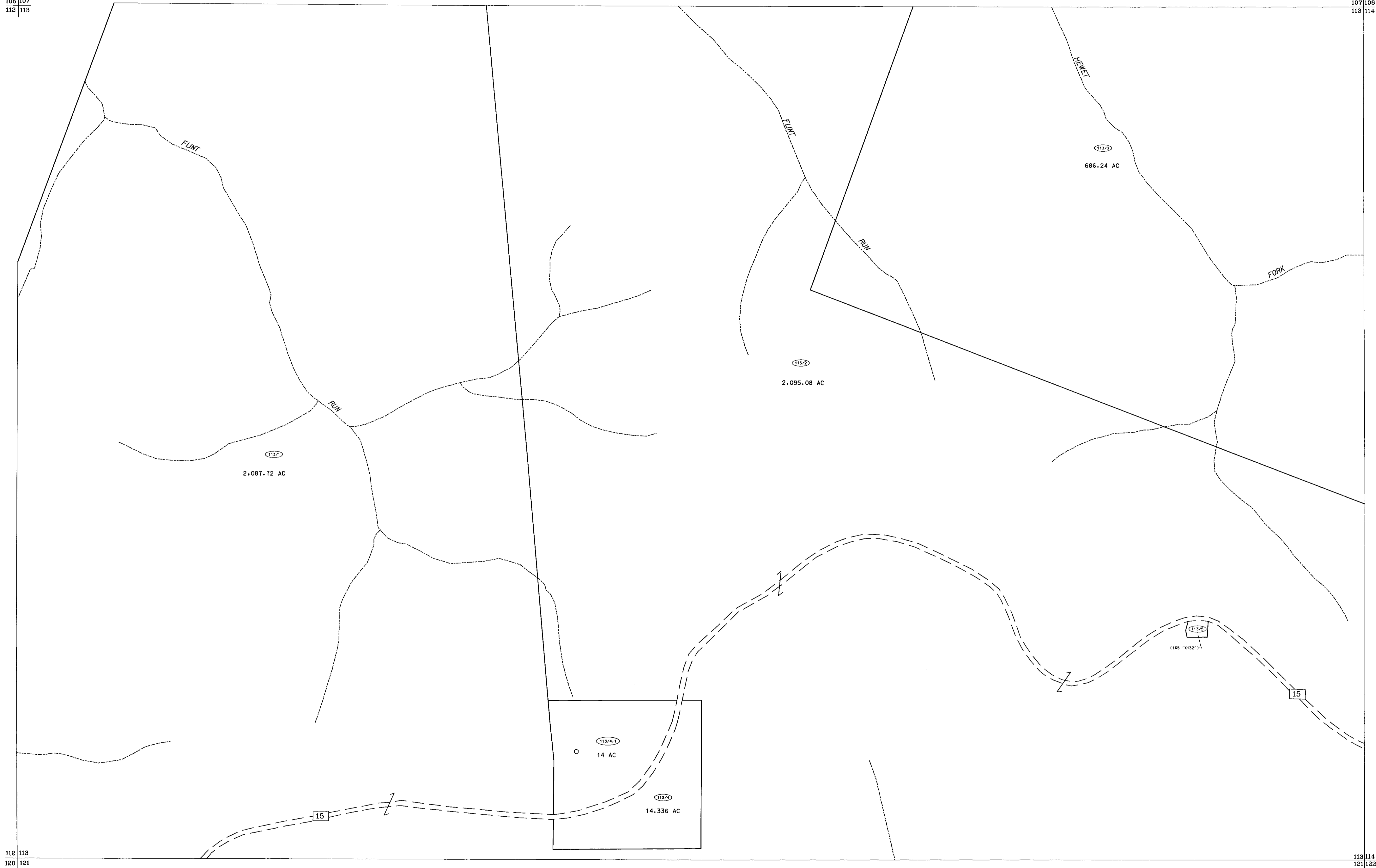
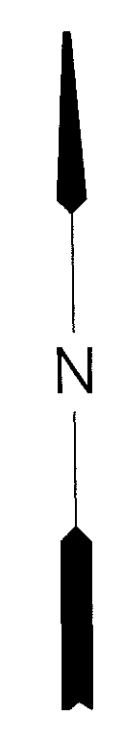


106 107  
112 113

107 108  
113 114



For Tax Purposes Only

Prepared by  
McKenzie Engineering Corporation  
806 Broad Street  
Summersville, WV 26651

LEGEND

Property line	Original lot line	
Edge of pavement or roadway	Deed lot number (15)	
Corporation line	Parcel or index number (99)	
District line	Improvement	
County line	Railroad	

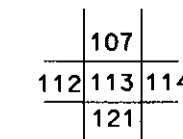
REVISIONS

1	
2	
3	
4	
5	
6	
7	
8	

RESTRICTION

All tax maps created under the provisions of reappraisal legislation are the property of Randolph County West Virginia and the reproduction, copying, distribution or sale of such tax maps or any copies thereof without the written permission of the Randolph County Assessor is prohibited by law.

KEY MAP



RANDOLPH COUNTY  
STATE OF WEST VIRGINIA  
Office of Assessor

DISTRICT

MINGO

SHEET NO: 113

Date, Aerial Photography: Apr 11, 1963  
Photo No: 385-16-6

Date, Map: June, 1963  
Scale: 1" = 400'