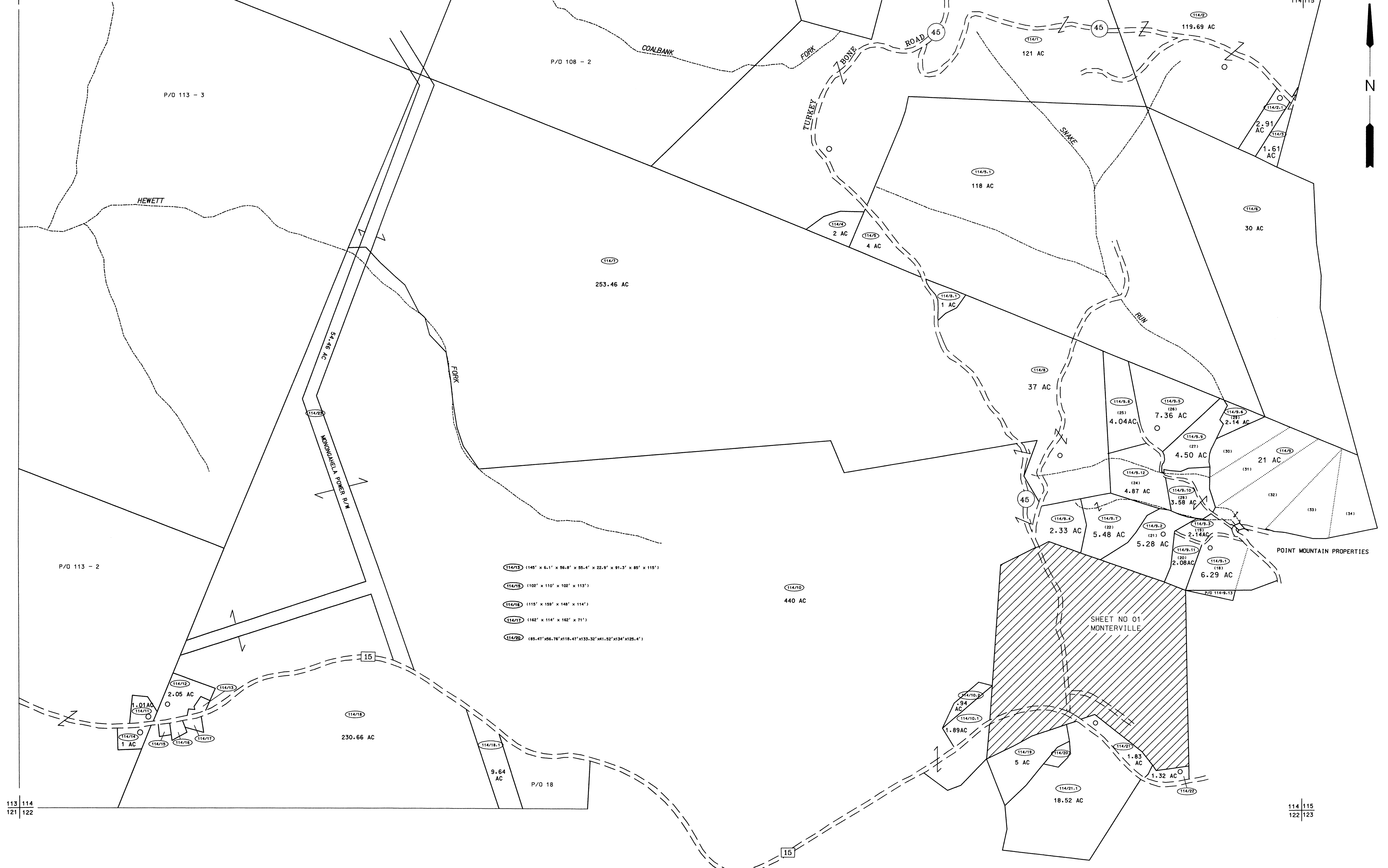
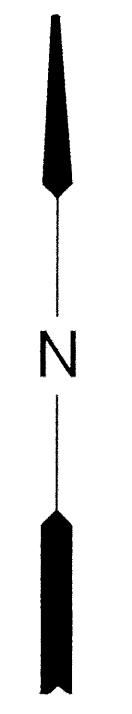


107 108
113 114

108 109
114 115



P/O 113 - 3

HEWETT

COALBANK FORK

TURKEY BONE

ROAD 45

SNAKE RUN

FORK

54' 39" A.P.
MONTERVILLE A.P. P.W.

P/O 113 - 2

- (114/13) (149' x 6-1' x 56-8' x 55-4' x 22-9' x 91-3' x 85' x 115')
- (114/16) (102' x 110' x 102' x 113')
- (114/16) (115' x 159' x 148' x 114')
- (114/17) (162' x 114' x 162' x 71')
- (114/20) (85-47' x 56-76' x 110-47' x 133-32' x 41-52' x 134' x 125-4')

(114/18) 440 AC

POINT MOUNTAIN PROPERTIES

SHEET NO 01
MONTERVILLE

113 114
121 122

114 115
122 123

For Tax Purposes Only

Prepared by
McKenzie Engineering Corporation
806 Broad Street
Summersville, WV 26651

LEGEND

Property line	—————	Original lot line	-----
Edge of pavement or roadway	-----	Deed lot number	(15)
Corporation line	-----	Parcel or index number	(99)
District line	-----	Improvement	o
County line	-----	Railroad	—+—

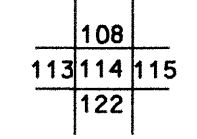
REVISIONS

1	
2	
3	
4	
5	
6	
7	
8	

RESTRICTION

All tax maps created under the provisions of reappraisal legislation are the property of Randolph County West Virginia and the reproduction, copying, distribution or sale of such tax maps or any copies thereof without the written permission of the Randolph County Assessor is prohibited by law.

KEY MAP



RANDOLPH COUNTY
STATE OF WEST VIRGINIA
Office of Assessor

DISTRICT

MINGO
SHEET NO: 114

Date, Aerial Photography: Apr 11, 1963
Photo No: 385-16-7

Date, Map: June, 1963
Scale: 1" = 400'