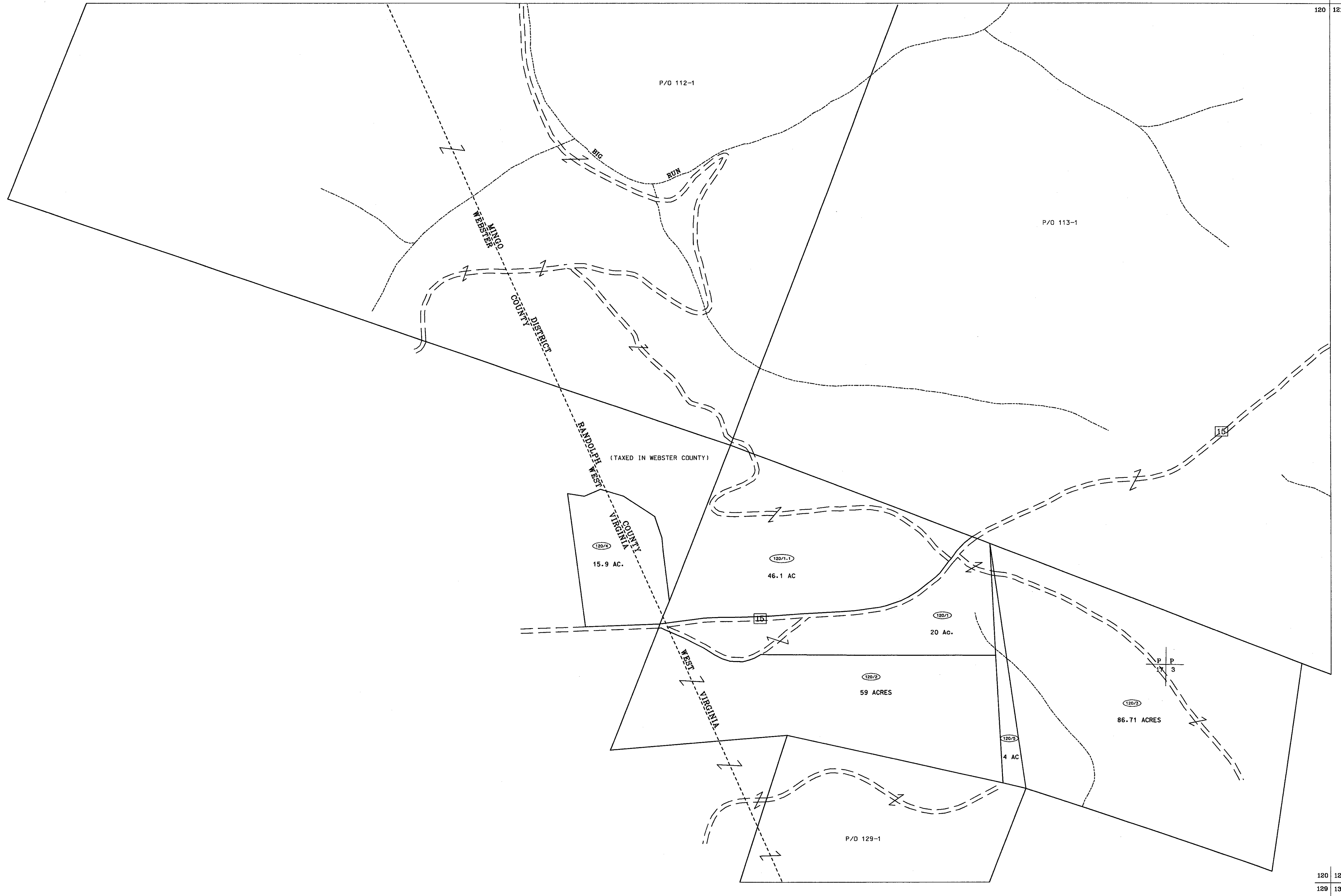


112  
120

112 113  
120 121



120  
129

120 121  
129 130

For Tax Purposes Only  
 Prepared by  
 McKenzie Engineering Corporation  
 806 Broad Street  
 Summersville, WV 26651

LEGEND	
Property line	Original lot line
Edge of pavement or roadway	Deed lot number
Corporation line	Parcel or index number
District line	Improvement
County line	Railroad

REVISIONS
1
2
3
4
5
6
7
8

**RESTRICTION**

All tax maps created under the provisions of reappraisal legislation are the property of Randolph County West Virginia and the reproduction, copying, distribution or sale of such tax maps or any copies thereof without the written permission of the Randolph County Assessor is prohibited by law.

KEY MAP			
<table border="1"> <tr><td>112</td></tr> <tr><td>120 121</td></tr> <tr><td>129</td></tr> </table>	112	120 121	129
112			
120 121			
129			

**RANDOLPH COUNTY**  
 STATE OF WEST VIRGINIA  
 Office of Assessor

**DISTRICT**  
 MINGO  
 SHEET NO: 120  
 Date, Aerial Photography: April, 1963  
 Photo No: 385-17-3  
 Date, Map: June, 1963  
 Scale: 1" = 400'

C:\MCKENZIE\engin\map\120.dgn Apr 13 1963 08:30:03