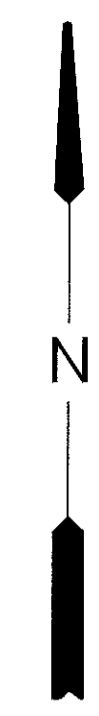


130 131
139 140

131 132
140 141

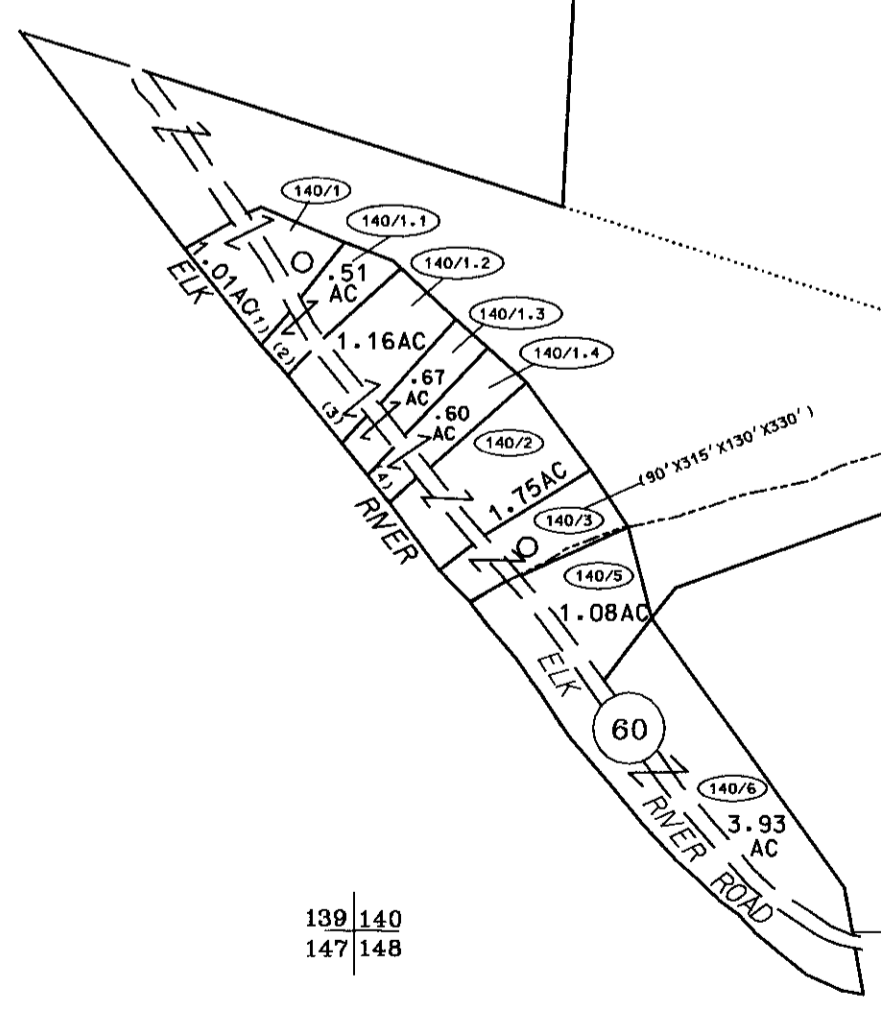


P/O 148 - 12

P/O MAP 148 - 12

P/O 148 - 12

P/O 148 - 2



139 140
147 148

140 141
148 149

For Tax Purposes Only

Prepared by
McKenzie Engineering Corporation
806 Broad Street
Summersville, WV 26651

LEGEND

Property line	-----	Original lot line	-----
Edge of pavement or roadway	-----	Deed lot number	(15)
Corporation line	-----	Parcel or index number	(29)
District line	-----	Improvement	o
County line	-----	Railroad	-----

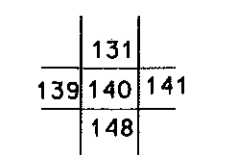
REVISIONS

1	
2	
3	
4	
5	
6	
7	
8	

RESTRICTION

All tax maps created under the provisions of reappraisal legislation are the property of Randolph County West Virginia and the reproduction, copying, distribution or sale of such tax maps or any copies thereof without the written permission of the Randolph County Assessor is prohibited by law.

KEY MAP



RANDOLPH COUNTY

STATE OF WEST VIRGINIA

Office of Assessor

DISTRICT

MINGO

SHEET NO: 140

Date, Aerial Photography: Apr 11, 1963
Photo No: 385-18-5

Date, Map: June, 1963
Scale: 1" = 400'