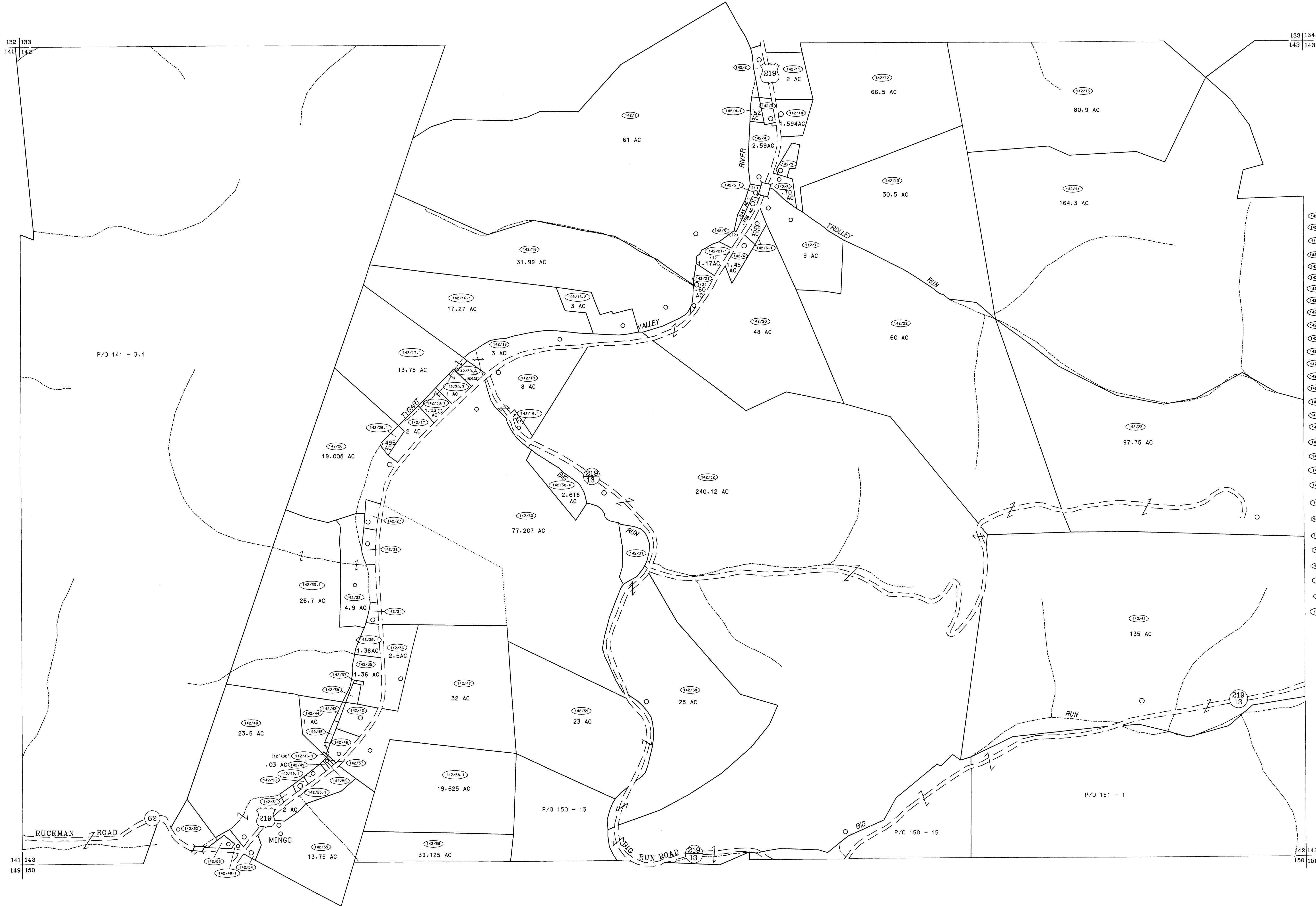


132 133
141 142

133 134
142 143



- (142/2) 1.2 AC
- (142/3) (225'x24'x24'x60'x234'x84')
- (142/5) .42 AC
- (142/6) 1.45 AC
- (142/7) 1 AC
- (142/8) (33'x264'x66'x214.5'x52'x178'x90')
- (142/9) (348.5'x41.55'x250.5'x50.7')
- (142/10) (227'x89'x250'x100')
- (142/11) .33 AC
- (142/12) 1 AC
- (142/13) (182'x128'x184'x54')
- (142/14) (35'x85')
- (142/15) (18'x181'x180'x4)
- (142/16) (142'x196'x171'x180')
- (142/17) (60'x471'x104'x180')
- (142/18) (88.3'x132'x66.5'x115'x4)
- (142/19) 1.39 AC
- (142/20) (138'x167')
- (142/21) 1 AC
- (142/22) (49'x204')
- (142/23) 1.61 AC
- (142/24) .03 AC
- (142/25) (136'x76'x116'x76')
- (142/26) (135'x76')
- (142/27) 2 AC
- (142/28) (200'x165'x120'x46')
- (142/29) (210'x102'x143'x122')
- (142/30) (38'x100')
- (142/31) (12'x100')
- (142/32) (44'x90'x50'x120'x80'x180')

141 142
149 150

142 143
150 151

For Tax Purposes Only
 Prepared by
 McKenzie Engineering Corporation
 806 Broad Street
 Summersville, WV 26651

LEGEND	
Property line	Original lot line
Edge of pavement or roadway	Deed lot number (15)
Corporation line	Parcel or index number (99)
District line	Improvement
County line	Railroad

REVISIONS
1
2
3
4
5
6
7
8

RESTRICTION

All tax maps created under the provisions of reappraisal legislation are the property of Randolph County West Virginia and the reproduction, copying, distribution or sale of such tax maps or any copies thereof without the written permission of the Randolph County Assessor is prohibited by law.

KEY MAP
133
141 142 143
150

RANDOLPH COUNTY
 STATE OF WEST VIRGINIA
 Office of Assessor

DISTRICT
 MINGO
 SHEET NO: 142
 Date, Aerial Photography: Apr 11, 1963
 Photo No: 385-18-9
 Date, Map: June, 1963
 Scale: 1" = 400'