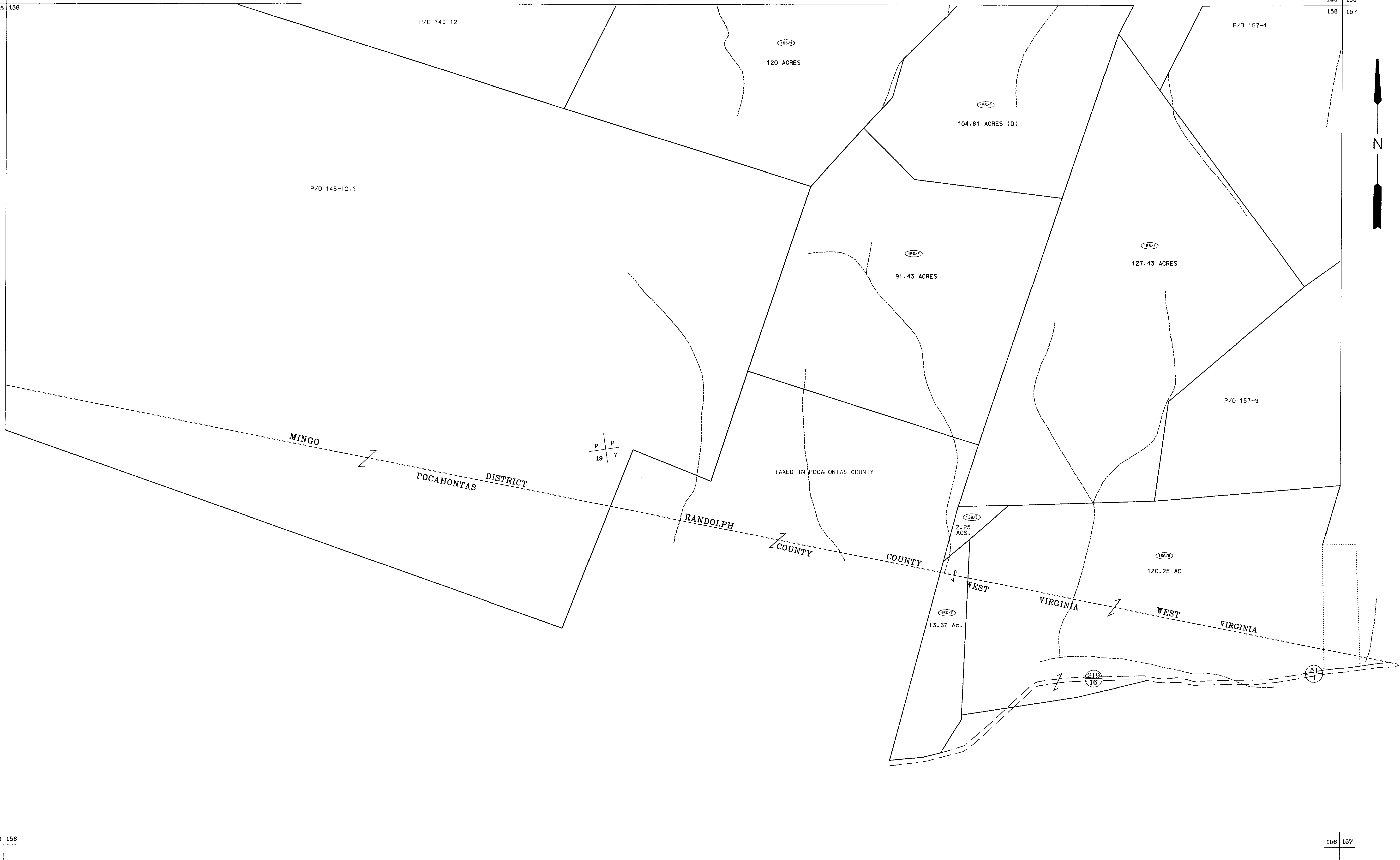


148 149
155 156

149 150
156 157



156 156

156 157

For Tax Purposes Only

Prepared by
McKenzie Engineering Corporation
806 Broad Street
Summersville, WV 26651

LEGEND

Property line	Original lot line
Edge of pavement or roadway	Deed lot number (15)
Corporation line	Parcel or index number (99)
District line	Improvement
County line	Railroad

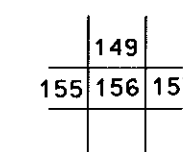
REVISIONS

1
2
3
4
5
6
7
8

RESTRICTION

All tax maps created under the provisions of reappraisal legislation are the property of Randolph County West Virginia and the reproduction, copying, distribution or sale of such tax maps or any copies thereof without the written permission of the Randolph County Assessor is prohibited by law.

KEY MAP



RANDOLPH COUNTY
STATE OF WEST VIRGINIA
Office of Assessor

DISTRICT

MINGO

SHEET NO: 156

Date, Aerial Photography: April, 1963
Photo No: 385-19-7

Date, Map: June, 1963
Scale: 1" = 400'