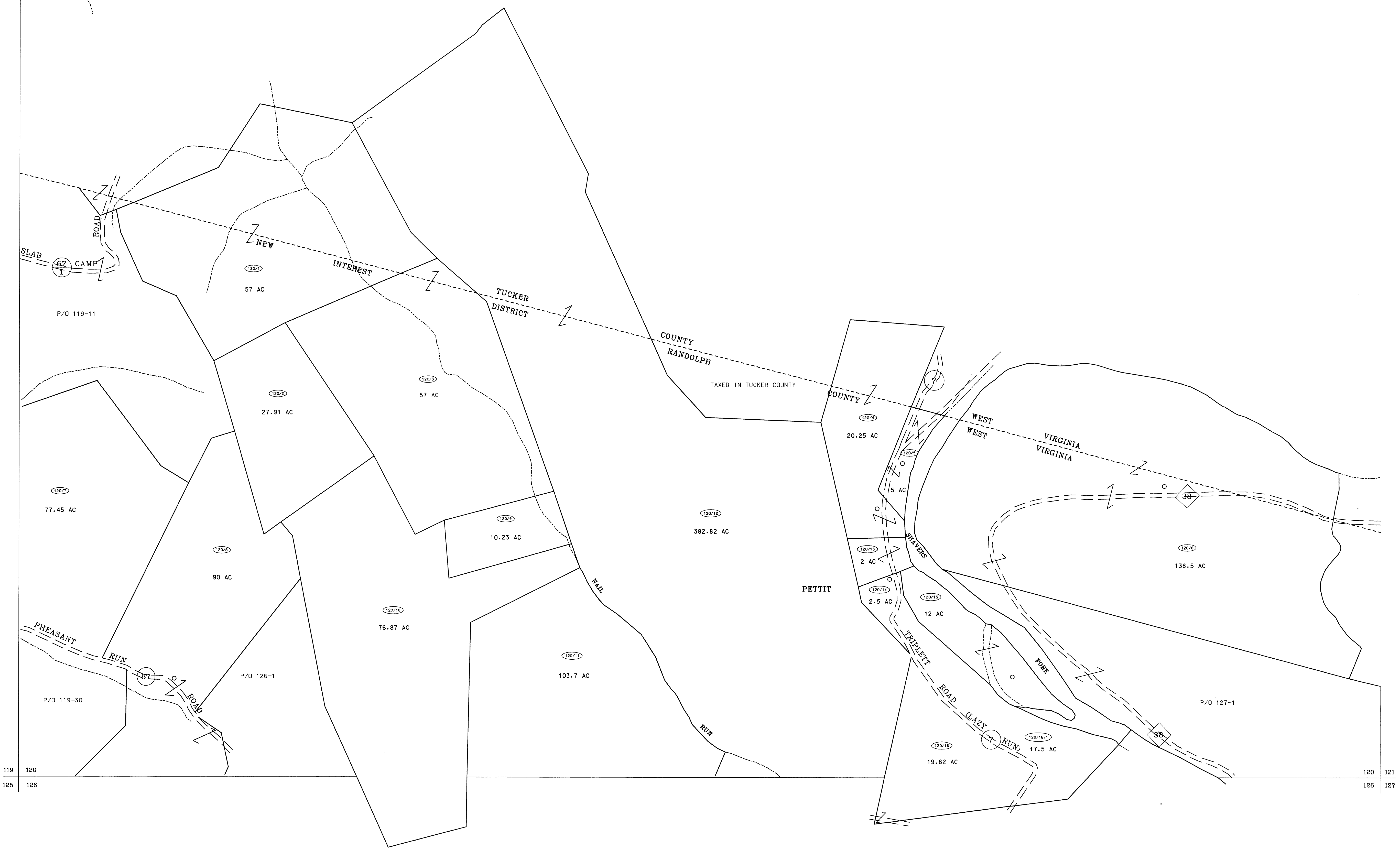
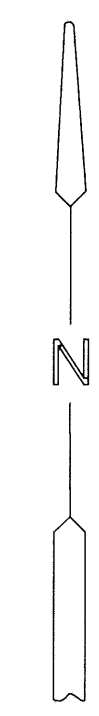


115
119 120

120 121

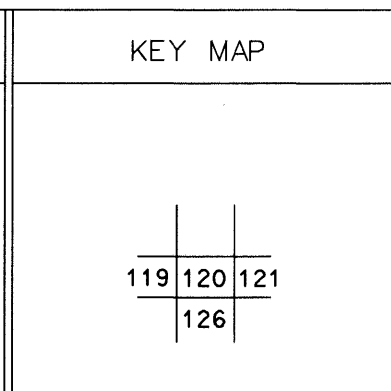


For Tax Purposes Only
Prepared by
McKenzie Engineering Corporation
806 Broad Street
Summersville, WV 26651

LEGEND	
Property line	Original lot line
Edge of pavement or roadway	Deed lot number (15)
Corporation line	Parcel or index number (99)
District line	Improvement (o)
County line	Railroad

REVISIONS
1
2
3
4
5
6
7
8

RESTRICTION
All tax maps created under the provisions of reappraisal legislation are the property of Randolph County West Virginia and the reproduction, copying, distribution or sale of such tax maps or any copies thereof without the written permission of the Randolph County Assessor is prohibited by law.



RANDOLPH COUNTY
STATE OF WEST VIRGINIA
Office of Assessor

DISTRICT
NEW INTEREST
SHEET NO: 120
Date, Aerial Photography: April, 1963
Photo No: 385-4-7
Date, Map: June, 1963
Scale: 1" = 400'