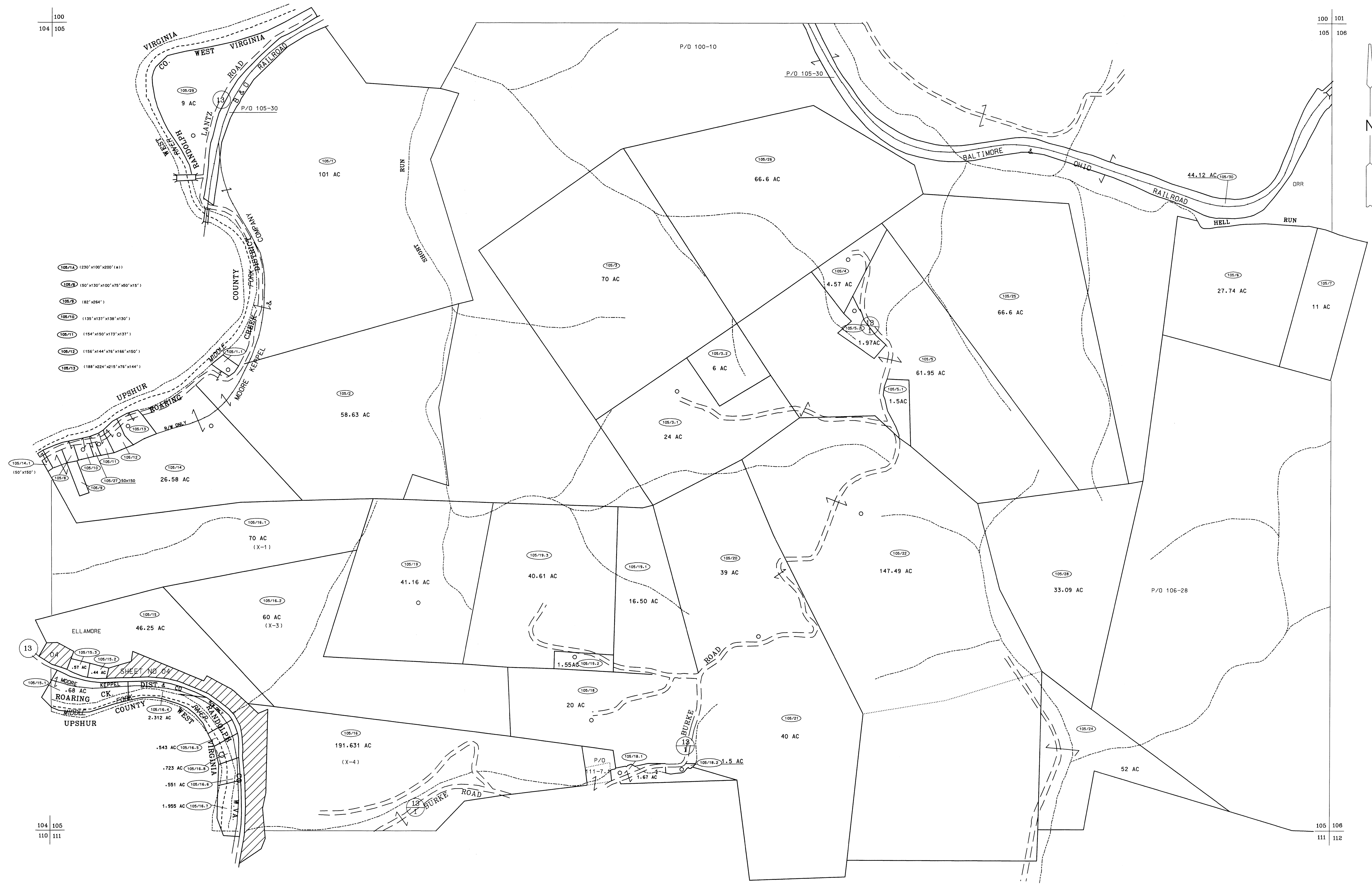


100  
104 105

100 101  
105 106



- 105/14 (230'x100'x200'x11)
- 105/9 (50'x130'x100'x75'x50'x15')
- 105/5 (82'x284')
- 105/10 (135'x137'x138'x130')
- 105/11 (154'x150'x137'x137')
- 105/12 (156'x144'x18'x186'x150')
- 105/13 (188'x224'x215'x26'x144')

104 105  
110 111

105 108  
111 112

For Tax Purposes Only

Prepared by  
McKenzie Engineering Corporation  
806 Broad Street  
Summersville, WV 26651

LEGEND

Property line	Original lot line
Edge of pavement or roadway	Deed lot number (15)
Corporation line	Parcel or index number (99)
District line	Improvement
County line	Railroad

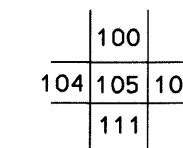
REVISIONS

1
2
3
4
5
6
7
8

RESTRICTION

All tax maps created under the provisions of reappraisal legislation are the property of Randolph County West Virginia and the reproduction, copying, distribution or sale of such tax maps or any copies thereof without the written permission of the Randolph County Assessor is prohibited by law.

KEY MAP



RANDOLPH COUNTY  
STATE OF WEST VIRGINIA  
Office of Assessor

DISTRICT

ROARING CREEK  
SHEET NO: 105  
Date, Aerial Photography: April, 1963  
Photo No: 385-6-3  
Date, Map: June, 1963  
Scale: 1" = 400'