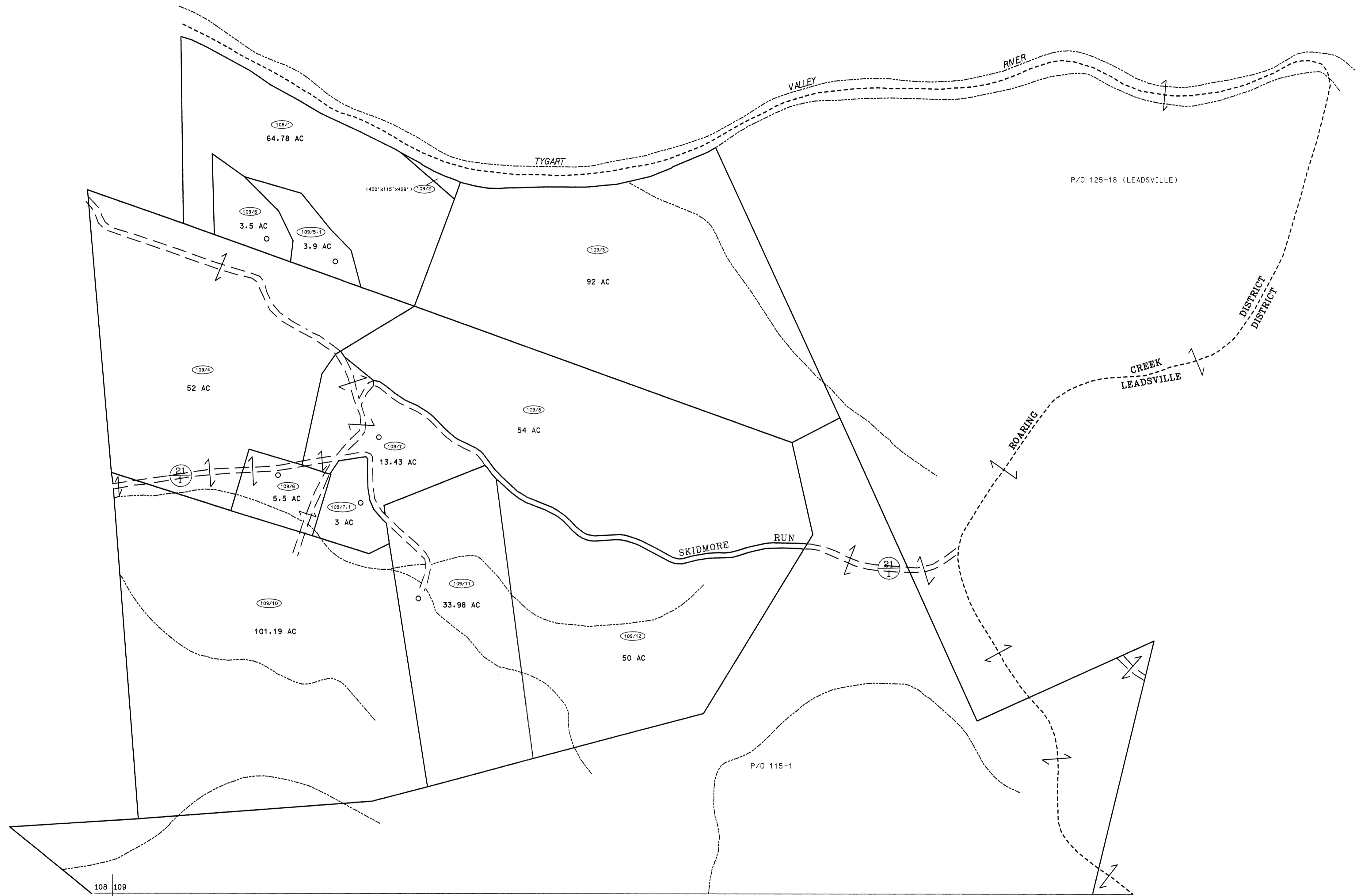


103  
108 109

109



108 109  
114 115

109  
115

For Tax Purposes Only

Prepared by  
McKenzie Engineering Corporation  
806 Broad Street  
Summersville, WV 26651

LEGEND

Property line	—————	Original lot line	-----
Edge of pavement or roadway	—————	Deed lot number	(15)
Corporation line	-----	Parcel or index number	⊙
District line	-----	Improvement	○
County line	-----	Railroad	—+—

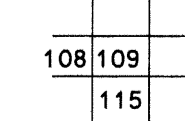
REVISIONS

1	
2	
3	
4	
5	
6	
7	
8	

RESTRICTION

All tax maps created under the provisions of reappraisal legislation are the property of Randolph County West Virginia and the reproduction, copying, distribution or sale of such tax maps or any copies thereof without the written permission of the Randolph County Assessor is prohibited by law.

KEY MAP



RANDOLPH COUNTY  
STATE OF WEST VIRGINIA  
Office of Assessor

DISTRICT

ROARING CREEK  
SHEET NO:109

Date, Aerial Photography: April, 1963  
Photo No: 385-6-9 385-7-9

Date, Map: June, 1963  
Scale: 1" = 400'