

118 119
124 125

124 125
130 131

119 120
125 126

125 126
131 132

FLATBUSH
FORK

FLATBUSH
FORK

ROARING
CREEK

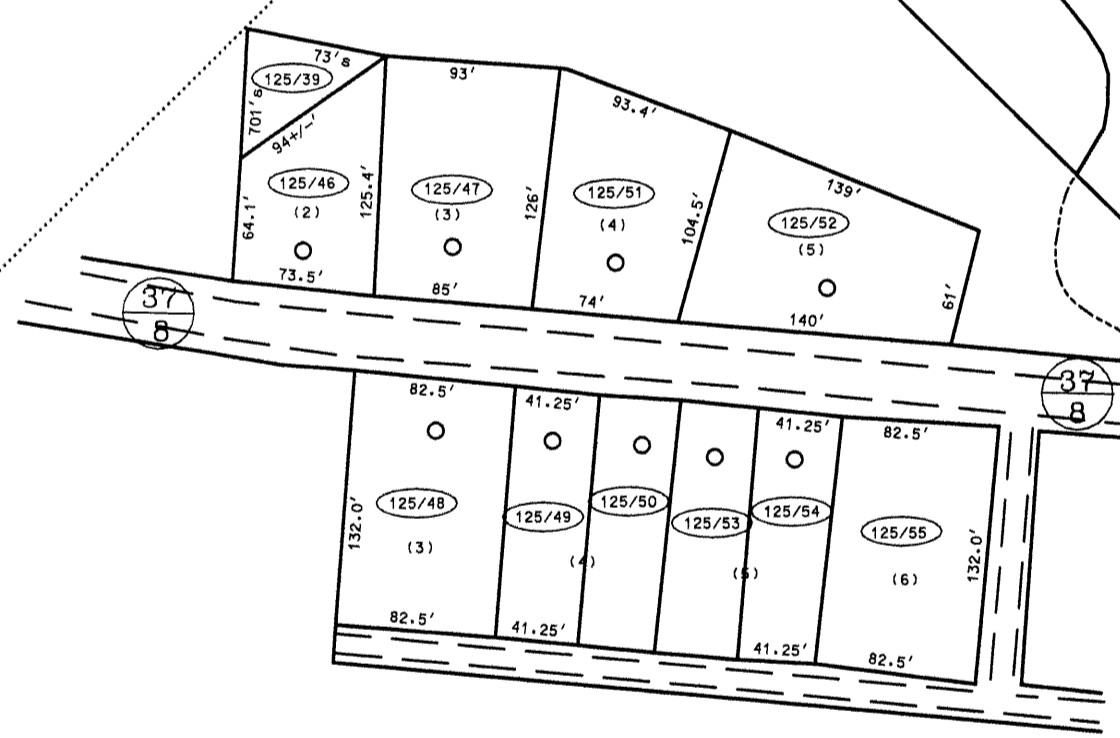
BALTIMORE
OHIO

RAILROAD
CREEK

- 125/7 (110'x220')
- 125/8 (116'x89'x182'x222')
- 125/9 (152'x64'x117'x64')
- 125/10 (125'x64'x117'x64')
- 125/11 (105'x84'x105'x82')
- 125/12 (135.5'x91.8'x132'x181.5')
- 125/13 (100'x49.5'x181.5'x87.5'x205.8')
- 125/14 (83'x126'x43'x124')
- 125/15 (43'x185'x24.7'x185')
- 125/20 (1 ACRE)

- 125/26 (190'x120' +/-)
- 125/27 (148'x131.5'x89.5'x144')

- 125/21 (82.5'x132'x75'x83'x158'x174.8')
- 125/28 (144'x85'x45'x12'x111.5x73.5')
- 125/29 (175'x375.25'x82.5'x427.75')
- 125/30 (177'x190'x10'x150' +/-)
- 125/31 (82.5'x115')
- 125/32 (50' +/-x150' +/-x100' +/-x120' +/-x230' +/-)
- 125/41 (0.25 AC)
- 125/42 (0.25 AC)
- 125/43 (0.75 AC)
- 125/46 (1.25 AC)
- 125/48 (1 AC)
- 125/88.1 163x420x440
- 125/73.1 1102x510x175.75x1



INSERT "A"
SCALE: 1"=100'

P P
7A 3



For Tax Purposes Only
 Prepared by
 McKenzie Engineering Corporation
 806 Broad Street
 Summersville, WV 26651

LEGEND	
Property line	—
Edge of pavement or roadway	—
Corporation line	—
District line	—
County line	—
Original lot line	— (15)
Deed lot number	Ⓣ
Parcel or Index number	Ⓣ
Improvement	○
Railroad	—

REVISIONS
1
2
3
4
5
6
7
8

RESTRICTION

All tax maps created under the provisions of reappraisal legislation are the property of Randolph County West Virginia and the reproduction, copying, distribution or sale of such tax maps or any copies thereof without the written permission of the Randolph County Assessor is prohibited by law.

KEY MAP
119
124 125 126
131

RANDOLPH COUNTY
 STATE OF WEST VIRGINIA
 Office of Assessor

DISTRICT
 ROARING CREEK
 SHEET NO:125
 Date, Aerial Photography: April, 1963
 Photo No: 385-7A-3
 Date, Map: June, 1963
 Scale: 1" = 400'