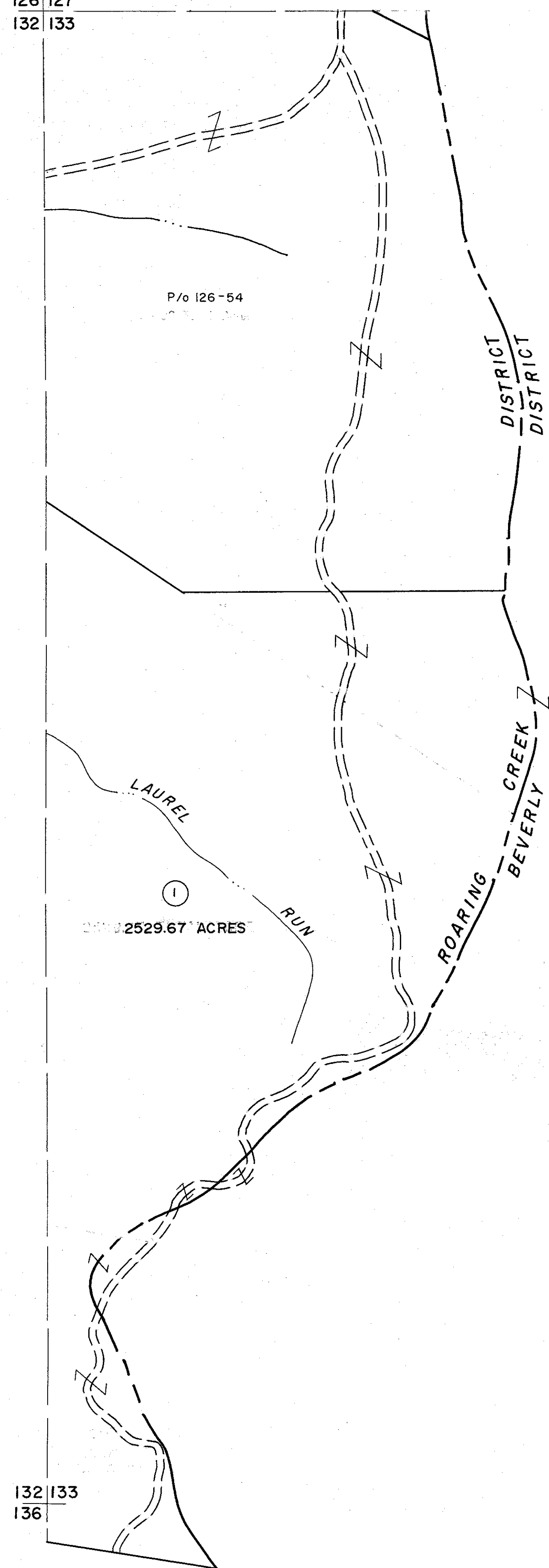


126 | 127  
132 | 133

127 |  
133 |



132 | 133  
136 |

133 |

**For Tax Purposes Only**

Prepared by  
**MICHAEL BAKER, JR., INC.**  
Consulting Engineers  
Rochester, Pennsylvania

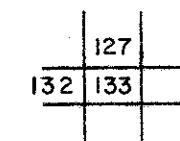
**Legend**

Property line	—————	Original lot line	-----
Edge of pavement or roadway	—————	Deed lot number	(15)
Corporation line	-----	Parcel or index number	(9)
District line	-----	Improvement	o
County line	-----	Railroad	—+—+—+—

**Revisions**

1	6-30-64	9		17
2	To 7-1-86 C.P.	10		18
3	REV. TO 7-1-88 NCS	11		19
4	OGIS 4-15-92 JEB	12		20
5	OGIS 5-6-93 TRL	13		21
6		14		22
7		15		23
8		16		24

**KEY MAP**



**RANDOLPH COUNTY**  
STATE OF WEST VIRGINIA  
Office of Assessor

**DISTRICT**

**ROARING CREEK**

**SHEET NO: 133**

Date, Aerial Photography: April, 1963 Date, Maps: June, 1963  
Photo No: 385-7A-6 Scale: 1"=400'  
385-9-10