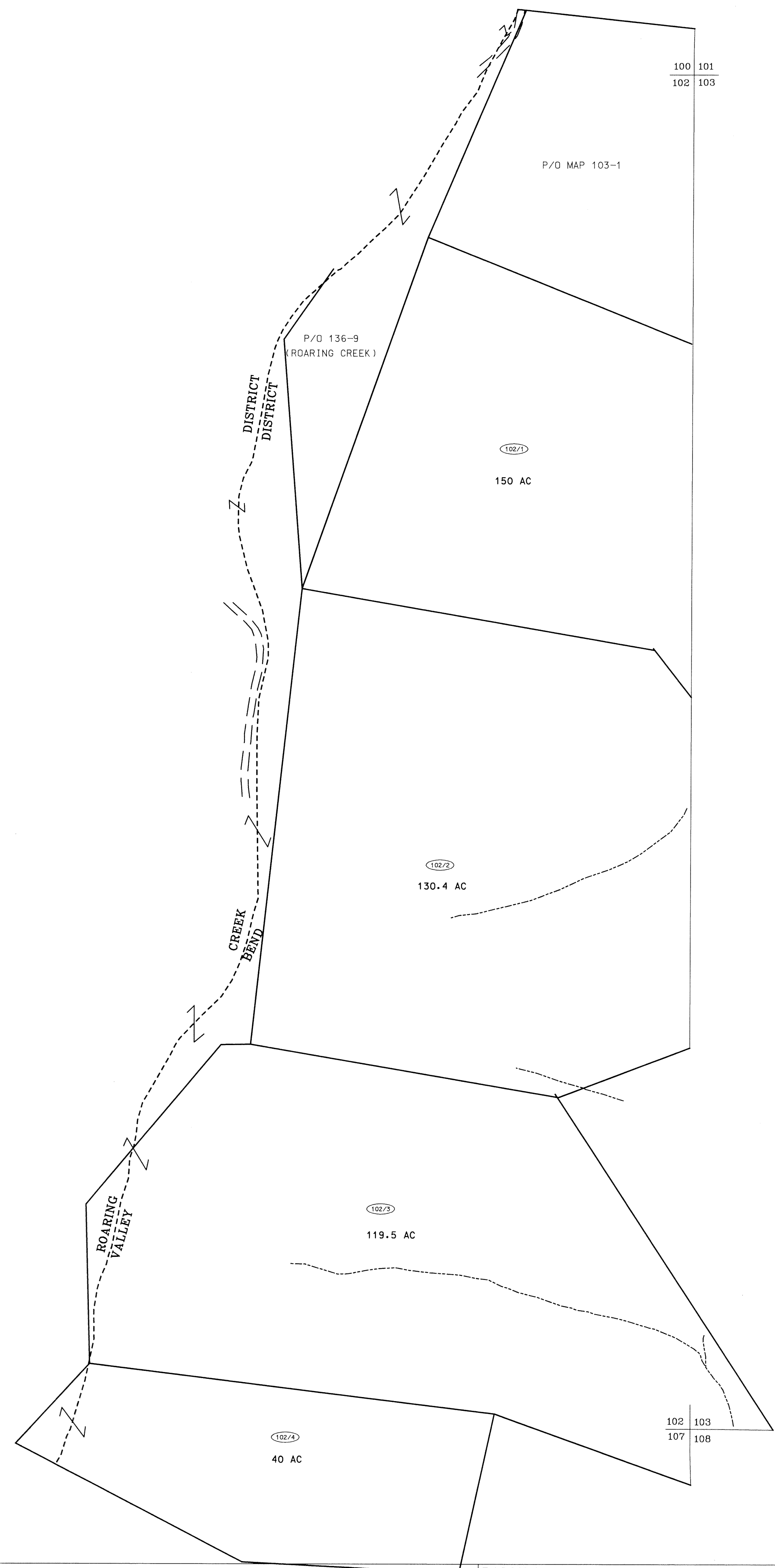


100
102

102
107



For Tax Purposes Only

Prepared by
McKenzie Engineering Corporation
806 Broad Street
Summersville, WV 26651

LEGEND

Property line	—————	Original lot line	-----
Edge of pavement or roadway	-----	Deed lot number	(15)
Corporation line	-----	Parcel or index number	Ⓣ
District line	-----	Improvement	o
County line	-----	Railroad	—+—+—+—

REVISIONS

1	
2	
3	
4	
5	
6	
7	
8	

RESTRICTION

All tax maps created under the provisions of reappraisal legislation are the property of Randolph County West Virginia and the reproduction, copying, distribution or sale of such tax maps or any copies thereof without the written permission of the Randolph County Assessor is prohibited by law.

KEY MAP

100
102 103
107

RANDOLPH COUNTY
STATE OF WEST VIRGINIA
Office of Assessor

DISTRICT

VALLEY BEND
SHEET NO: 102

Date, Aerial Photography: April, 1963
Photo No: 385-9-10
Date, Map: June, 1963
Scale: 1" = 400'