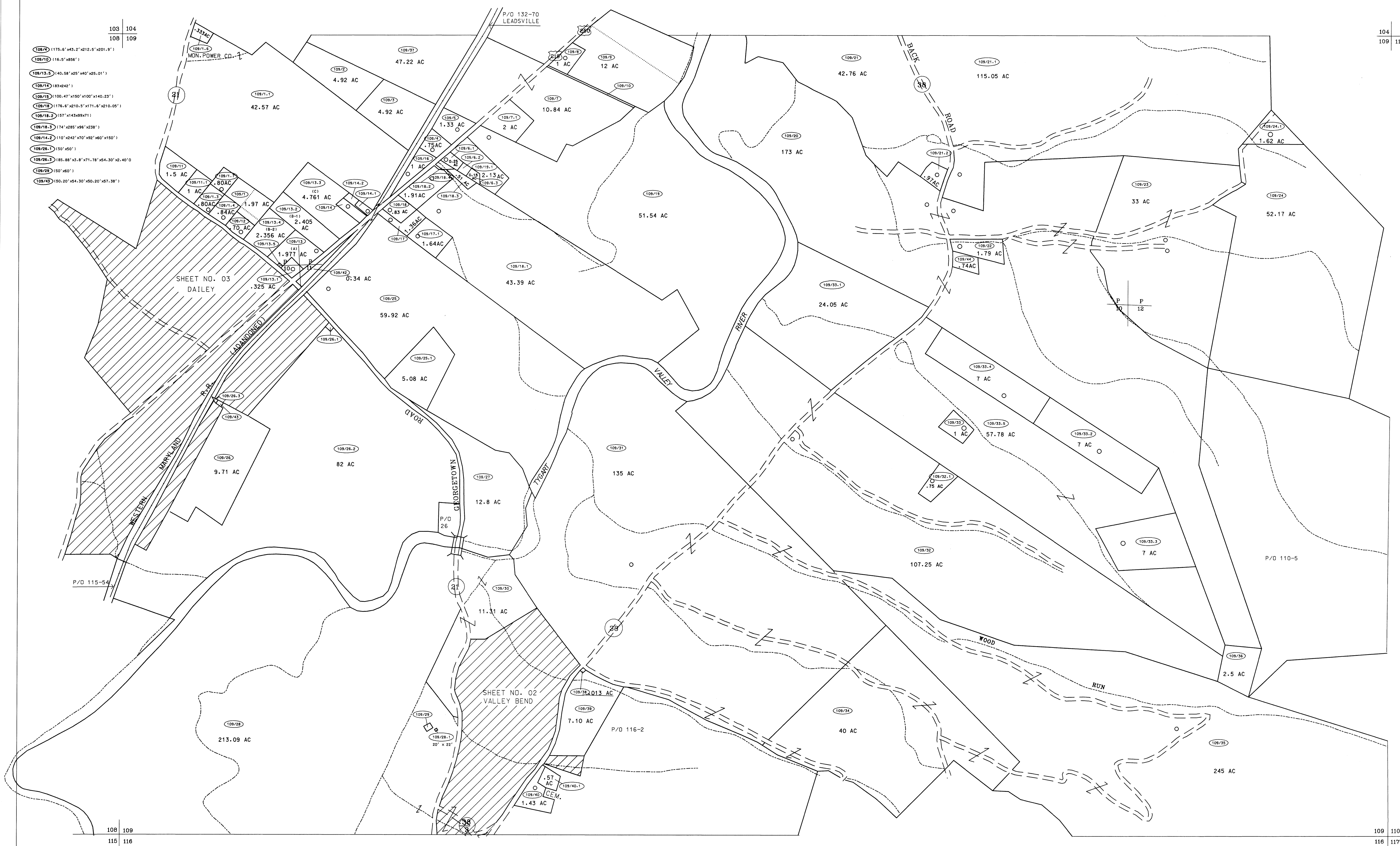


- 103 104
- 108 109
- 109/72 (1175.6'x43.2'x212.5'x201.9')
- 109/70 (116.5'x856')
- 109/13.5 (140.58'x25'x40'x25.01')
- 109/74 (83x242')
- 109/75 (100.47'x150'x100'x140.23')
- 109/78 (1176.6'x210.5'x111.6'x210.09')
- 109/18.2 (157'x143x9x71')
- 109/14.2 (174'x285'x96'x238')
- 109/14.2 (10'x242'x70'x92'x60'x150')
- 109/26.1 (50'x50')
- 109/26.3 (85.88'x3.8'x71.78'x54.30'x2.40'0)
- 109/28 (50'x60')
- 109/23 (50.20'x54.30'x50.20'x57.38')



108 109
115 116

109 110
116 117

For Tax Purposes Only

Prepared by
 McKenzie Engineering Corporation
 806 Broad Street
 Summersville, WV 26651

LEGEND	
Property line	—————
Edge of pavement or roadway	—————
Corporation line	—————
District line	—————
County line	—————
Original lot line	- - - - -
Deed lot number	(15)
Parcel index number	(99)
Improvement	o
Railroad	—+—+—+—

REVISIONS	
1	
2	
3	
4	
5	
6	
7	
8	

RESTRICTION

All tax maps created under the provisions of reappraisal legislation are the property of Randolph County West Virginia and the reproduction, copying, distribution or sale of such tax maps or any copies thereof without the written permission of the Randolph County Assessor is prohibited by law.

KEY MAP	
104	+
108 109 110	+
116	+

RANDOLPH COUNTY
 STATE OF WEST VIRGINIA
 Office of Assessor

DISTRICT
 VALLEY BEND
 SHEET NO: 109
 Date, Aerial Photography: April, 1963
 Photo No: 385-10-11
 Date, Map: June, 1963
 Scale: 1" = 400'