

FOR TAX PURPOSES ONLY

Prepared by
RITCHIE COUNTY
ASSESSOR'S OFFICE
ARLENE MOSSER, ASSESSOR
HARRISVILLE, W.Va.

LEGEND

Property line
 Edge of pavement or roadway
 Corporation line
 District line
 County line
 Waterways

Original lot line
 Deed lot number (15)
 Parcel or index number (99)
 Improvement
 Railroad

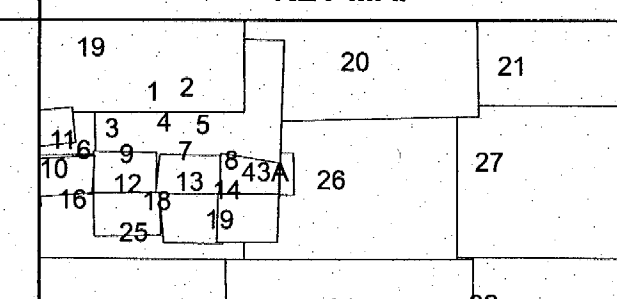
REVISIONS

1. 4/22/06 H&S
 2. 5/17/2011 RTI
 3. 11-30-10 H&S
 4. 5/17/2012 PJHH
 5.
 6.
 7.
 8.
 9.

RESTRICTION

All finished tax maps created under the provisions of legislation are the property of the Ritchie County Assessor and the reproduction, copying, distribution, sale, or lease of such tax maps or copies thereof without the written permission of the Ritchie County Assessor is prohibited by law.

KEY MAP



Ritchie County
 Office of Assessor
HARRISVILLE, W.Va.

CLAY DISTRICT

District : 03 Map No : 26

Date, Aerial Photography : APRIL, 1962 Date, Map : JAN., 1964
 Photo No : 157;159 Scale : 1"=400'