

FOR TAX PURPOSES ONLY

Prepared by
RITCHIE COUNTY
ASSESSOR'S OFFICE
ARLENE MOSSER, ASSESSOR
HARRISVILLE, W.Va.

LEGEND

Property line	—	Original lot line	---
Edge of pavement or roadway	—	Deed lot number	(15)
Corporation line	—	Parcel or index number	(99)
District line	—	Improvement	o
County line	—	Railroad	—
Waterways	—		

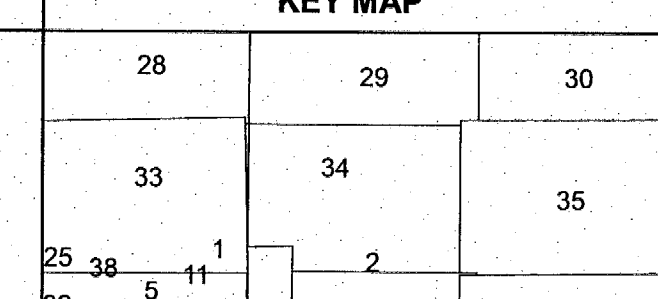
REVISIONS

1.	4/23/06 H&S
2.	5/17/2011 RTI
3.	11/20/10 S&H
4.	10/9/2012 PJHH
5.	
6.	
7.	
8.	
9.	

RESTRICTION

All finished tax maps created under the provisions of legislation are the property of the Ritchie County Assessor and the reproduction, copying, distribution, sale, or lease of such tax maps or copies thereof without the written permission of the Ritchie County Assessor is

KEY MAP



Ritchie County
Office of Assessor
HARRISVILLE, W.Va.

CLAY DISTRICT
 District : 03 Map No : 34

Date, Aerial Photography : APRIL, 1962 Date, Map : JAN., 1964
 Photo No : 115,117 Scale : 1"=400'