

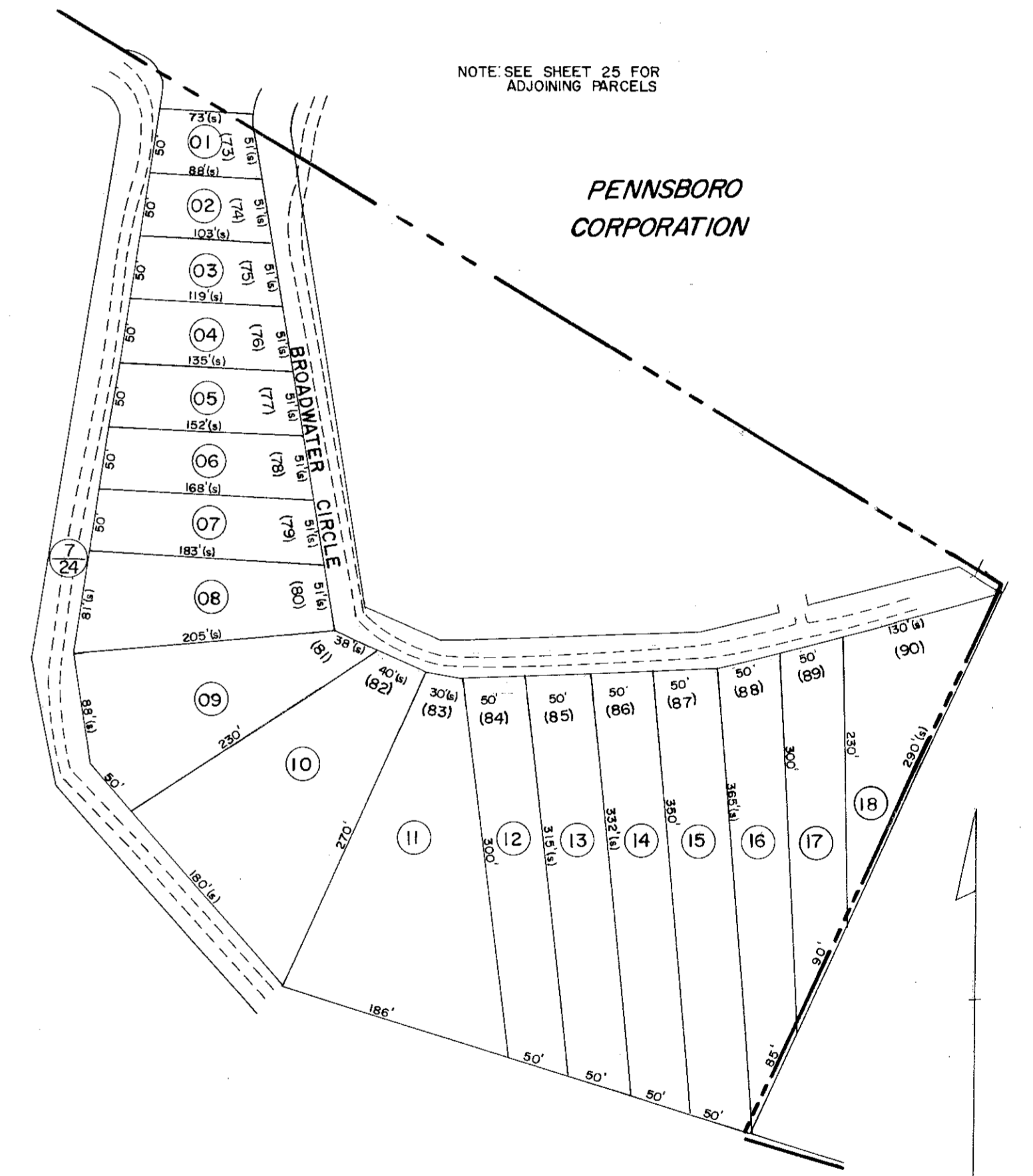
PENNSBORO CORPORATION



NOTE: SEE SHEET 26 FOR ADJOINING PARCELS

EAST OF PENNSBORO  
SHEET 43A

NOTE: SEE SHEET 25 FOR ADJOINING PARCELS



NUTTERCREST ADDITION  
SOUTH OF PENNSBORO  
SHEET 43B

FOR TAX PURPOSES ONLY

Prepared by  
L. ROBERT KIMBALL  
Consulting Engineer  
Ebensburg, Pennsylvania

Legend	
Property line	Original lot line
Edge of pavement or roadway	Dead lot number in parenthesis (15)
Corporation line	Parcel or index number in circle (22)
District line	Improvement
County line	Railroad

Revisions	
1	5-22-72 JM
2	1-6-76 DS
3	4-21-77 SRJ
4	SLS INC. 3/10/99 DSW
5	
6	
7	
8	

STATE OF WEST VIRGINIA  
RITCHIE COUNTY  
Office of Assessor

CLAY DISTRICT  
SHEET 43

Date, Aerial Photography: MAY, 1961  
Photo No: 135  
Date, Map: JAN., 1964  
Scale: 1" = 100'