

FOR TAX PURPOSES ONLY

Prepared by
RITCHIE COUNTY
ASSESSOR'S OFFICE
ARLENE MOSSER, ASSESSOR
HARRISVILLE, W.Va.

LEGEND

Property line	—————
Edge of pavement or roadway	- - - - -
Corporation line	- · - · -
District line	- - - - -
County line	- - - - -
Waterways	~~~~~

Original lot line	- - - - -
Deed lot number	(15)
Parcel or index number	(99)
Improvement	o
Railroad	—————

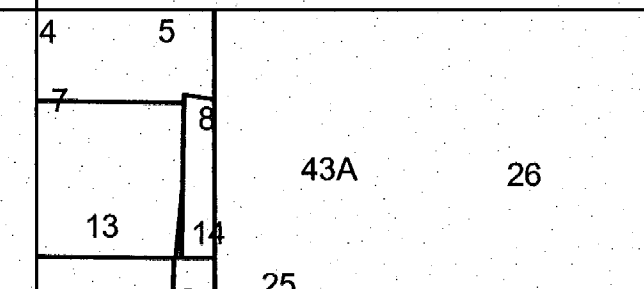
REVISIONS

1.	SLS INC. 3/10/99 DSW
2.	5/17/2011 RTI
3.	
4.	
5.	
6.	
7.	
8.	
9.	

RESTRICTION

All finished tax maps created under the provisions of legislation are the property of the Ritchie County Assessor and the reproduction, copying, distribution, sale, or lease of such tax maps or copies thereof without the written permission of the Ritchie County Assessor is prohibited by law.

KEY MAP



Ritchie County
Office of Assessor
HARRISVILLE, W.Va.

CLAY DISTRICT

District : 03 Map No : 43A

Date, Aerial Photography : MAY, 1961 Date, Map : JAN., 1964
 Photo No : 135 Scale : 1"=100'