

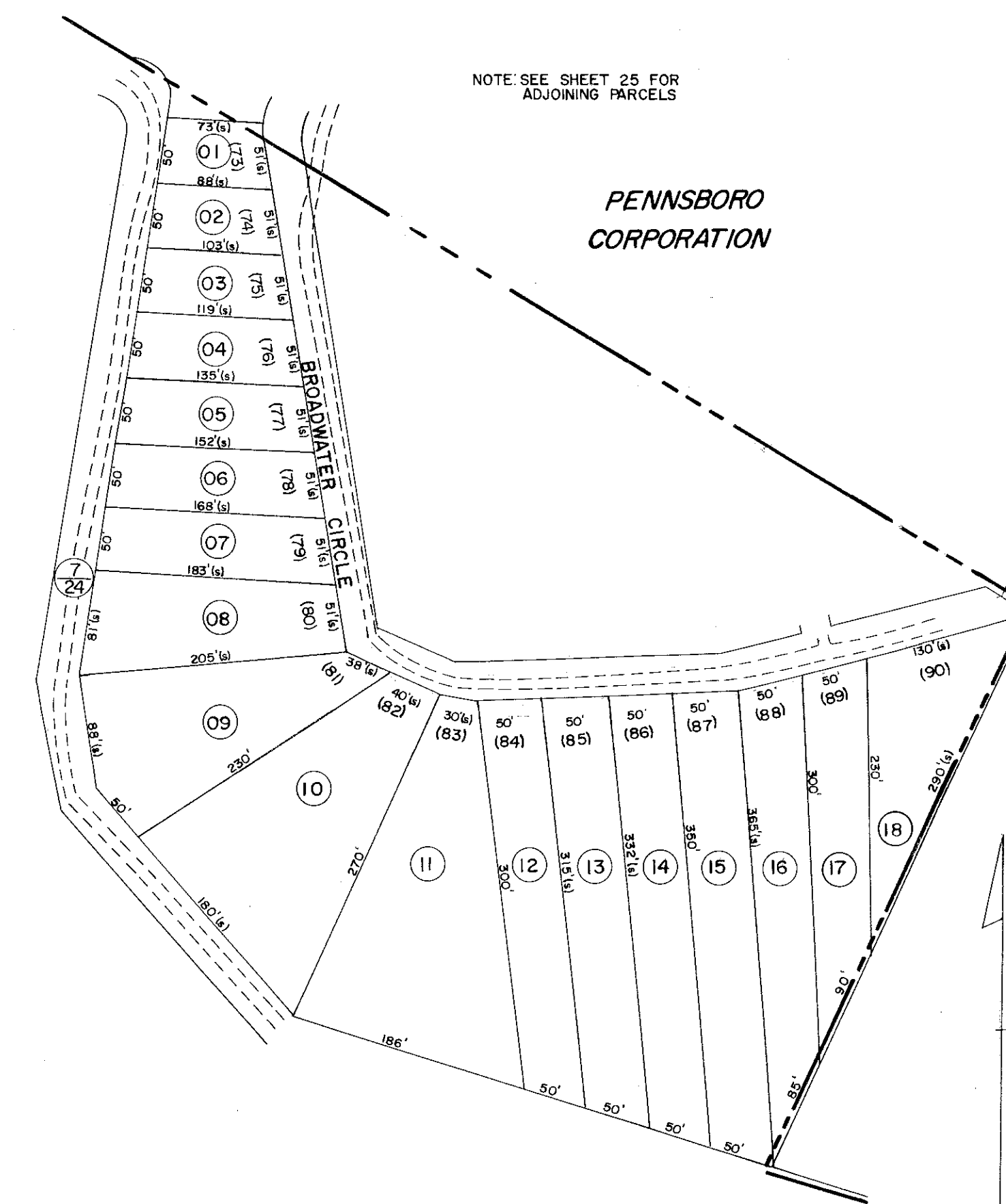
PENNSBORO CORPORATION



NOTE: SEE SHEET 26 FOR ADJOINING PARCELS

EAST OF PENNSBORO
SHEET 43A

NOTE: SEE SHEET 25 FOR ADJOINING PARCELS



PENNSBORO CORPORATION

NUTTERCREST ADDITION
SOUTH OF PENNSBORO
SHEET 43B

FOR TAX PURPOSES ONLY

Prepared by
L. ROBERT KIMBALL
Consulting Engineer
Ebensburg, Pennsylvania

Legend	
Property line	Original lot line
Edge of pavement or roadway	Dead lot number in parenthesis (15)
Corporation line	Parcel or index number in circle (99)
District line	Improvement
County line	Railroad

Revisions	
1	5-22-72 LM
2	1-6-76 DS
3	4-21-77 SRJ
4	SLS INC. 3/10/99 DSW
5	
6	
7	
8	

STATE OF WEST VIRGINIA
RITCHIE COUNTY
Office of Assessor

CLAY DISTRICT
SHEET 43

Date, Aerial Photography: MAY, 1961
Photo No: 135

Date, Map: JAN., 1964
Scale: 1" = 100'