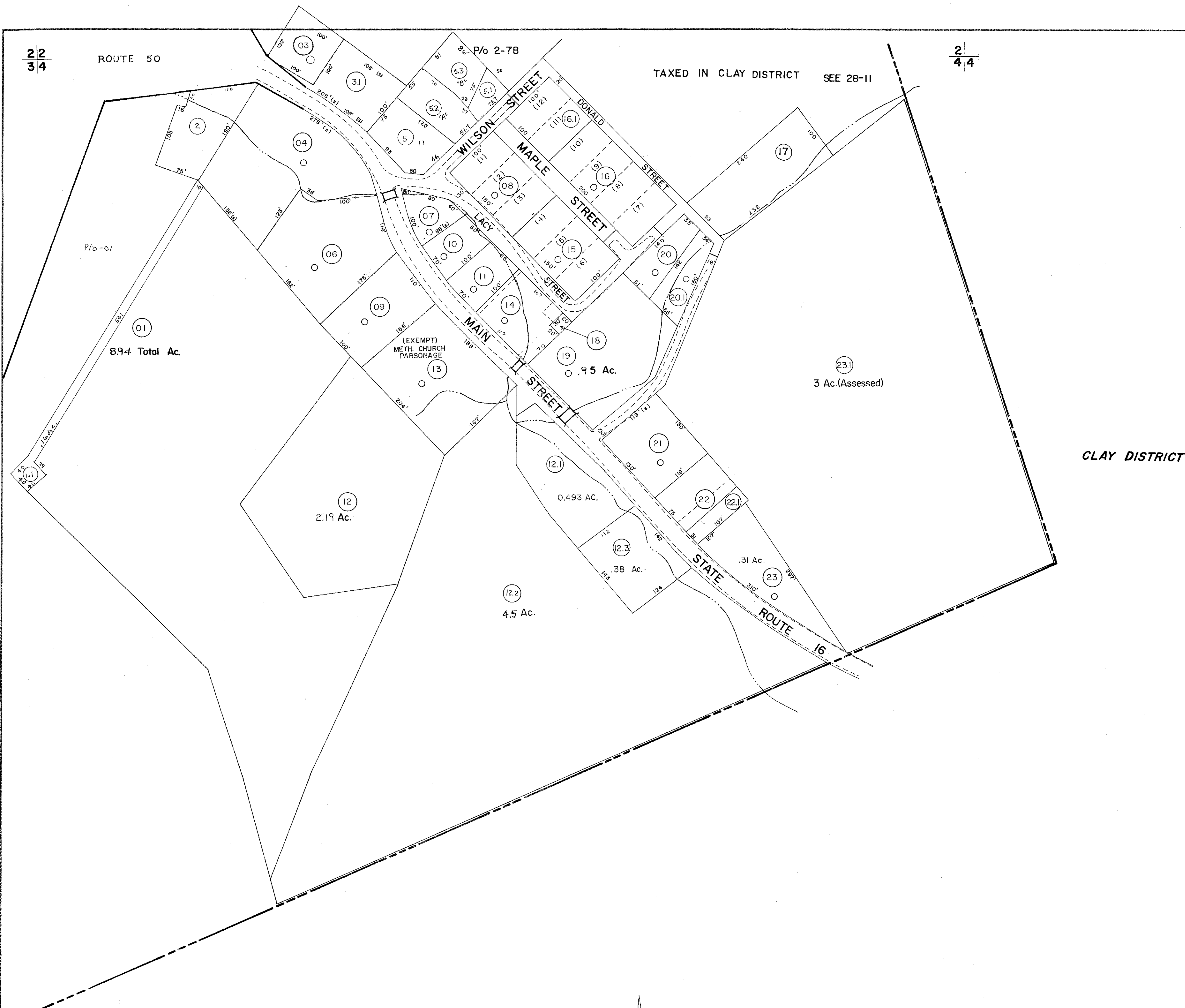


2/2
3/4

ROUTE 50

2/4
4/4

TAXED IN CLAY DISTRICT SEE 28-11



3/4

FOR TAX PURPOSES ONLY

Prepared by
L. ROBERT KIMBALL
Consulting Engineer
Ebensburg, Pennsylvania

Legend

Property line	-----	Original lot line
Edge of pavement or roadway	-----	Dead lot number in parenthesis	(15)
Corporation line	-----	Parcel or index number in circle	(99)
District line	-----	Improvement	o
County line	-----	Railroad	++++

Revisions

1	5-16-72	JHP	9		
2	1-12-76	T.G.	10		
3	3-20-80	NCS	11		
4	Revised to 7-1-83	DF	12		
5	Revised to 7-1-85	DF	13		
6	SLS INC. 2/16/00	JAW	14		
7			15		
8			16		

STATE OF WEST VIRGINIA
COUNTY OF RITCHIE
Office of Assessor

ELLENBORO CORPORATION
SHEET 04

Date, Aerial Photography: APRIL, 1961 Date, Map: DEC, 1962
Photo No: 04 Scale: 1" = 100'