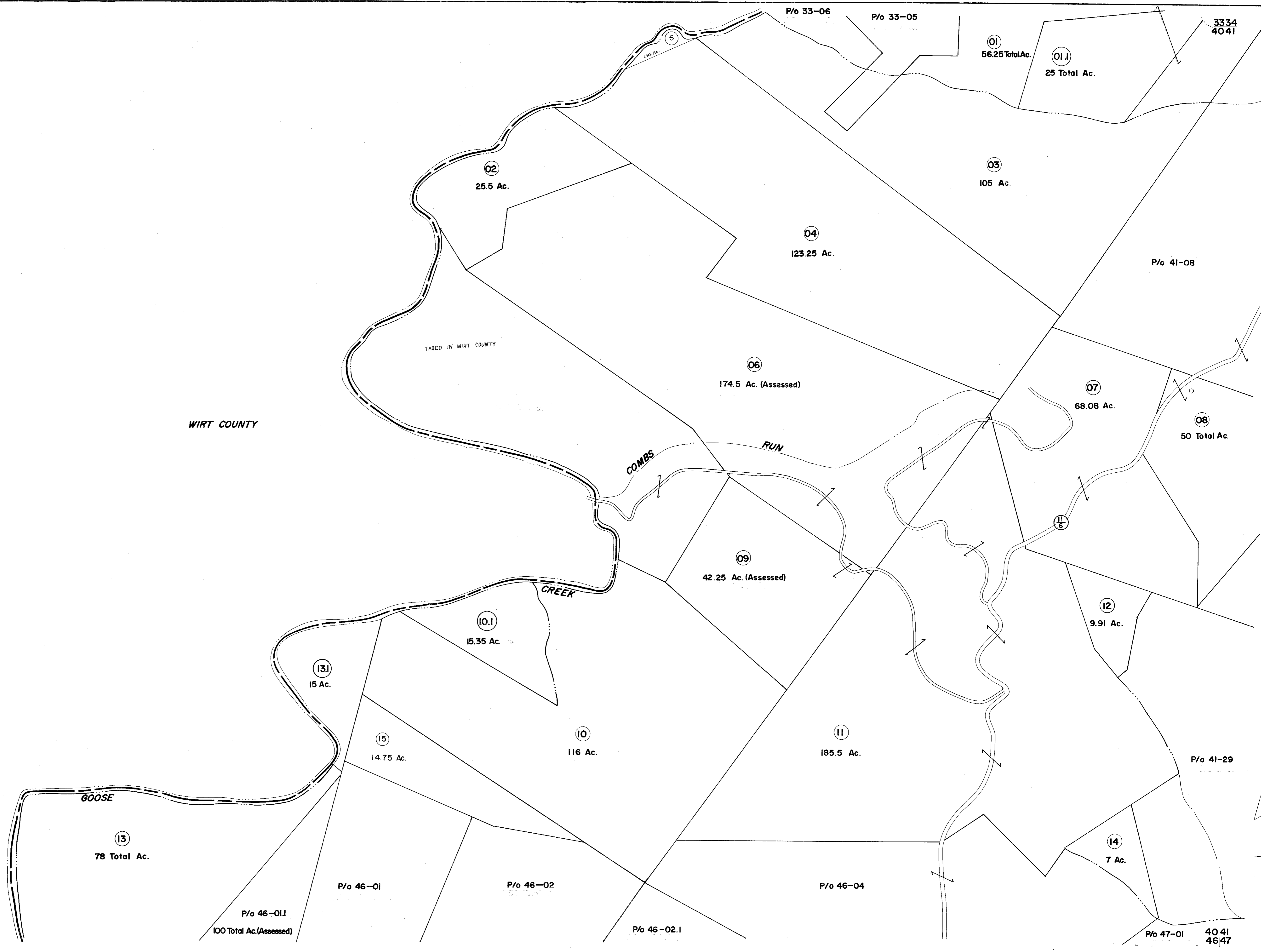


33  
40

3334  
40/41

40  
46



**FOR TAX PURPOSES ONLY**

Prepared by  
**L. ROBERT KIMBALL**  
 Consulting Engineer  
 Ebensburg, Pennsylvania

**Legend**

Property line	Original lot line	(15)
Edge of pavement or roadway	Deed lot number in parenthesis	(99)
Corporation line	Parcel or index number in side	o
District line	Improvement	
County line	Railroad	

**Revisions**

1	REVISED 8/5/64	9	17
2	1-13-76 DS	10	18
3	3-25-80 Nos	11	19
4	Revised to 7-1-83	12	20
5	SLS INC. 3/10/99 DSW	13	21
6		14	22
7		15	23
8		16	24

STATE OF WEST VIRGINIA  
 RITCHIE COUNTY  
 Office of Assessor

**GRANT DISTRICT  
SHEET 40**

Date, Aerial Photography: APRIL, 1962  
 Photo No: 13  
 Date, Map: NOV, 1963  
 Scale: 1" = 400'

150 WHELAN, A. & S. SMITH CO., P.O., PA. 17244-1262