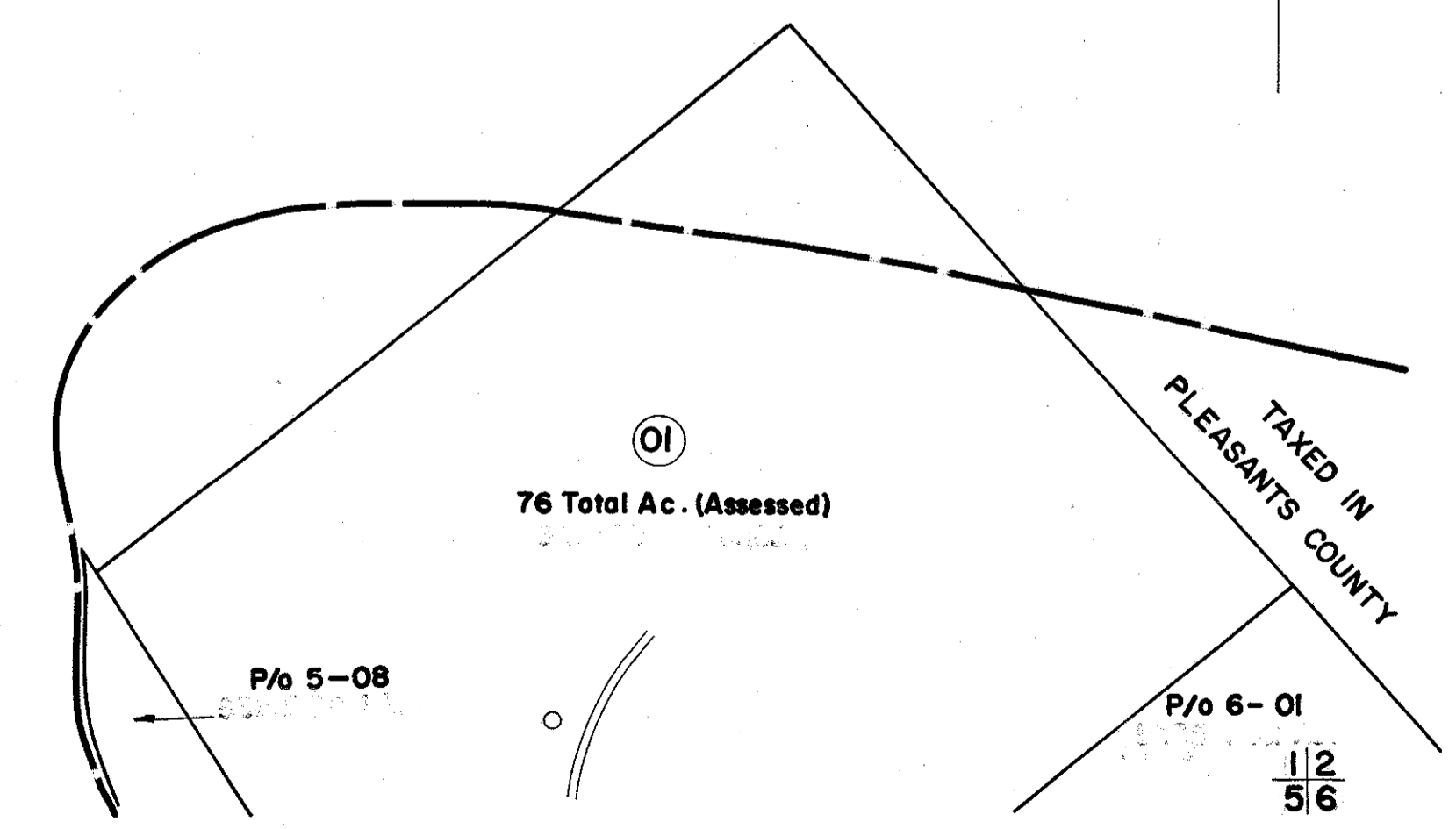




PLEASANTS COUNTY



FOR TAX PURPOSES ONLY

Prepared by  
**L. ROBERT KIMBALL**  
Consulting Engineer  
Ebensburg, Pennsylvania

Legend	
Property line	Original lot line
Edge of pavement or roadway	Dead lot number in parenthesis
Corporation line	Parcel or index number in circle
District line	Improvement
County line	Railroad

Revisions				
1	REV. TO 7-1-83	NCS	*	17
2	SLS INC 1/22/98	JWM	10	18
3			11	19
4			12	20
5			13	21
6			14	22
7			15	23
8			16	24

STATE OF WEST VIRGINIA  
RITCHIE COUNTY  
Office of Assessor

GRANT DISTRICT  
SHEET 01

Date, Aerial Photography: APRIL, 1962 Date, Map: NOV., 1963  
Photo No: 35 Scale: 1" = 400'

156 IMPERIAL, A.B., SMITH CO., FGR., PA. 15244-1262