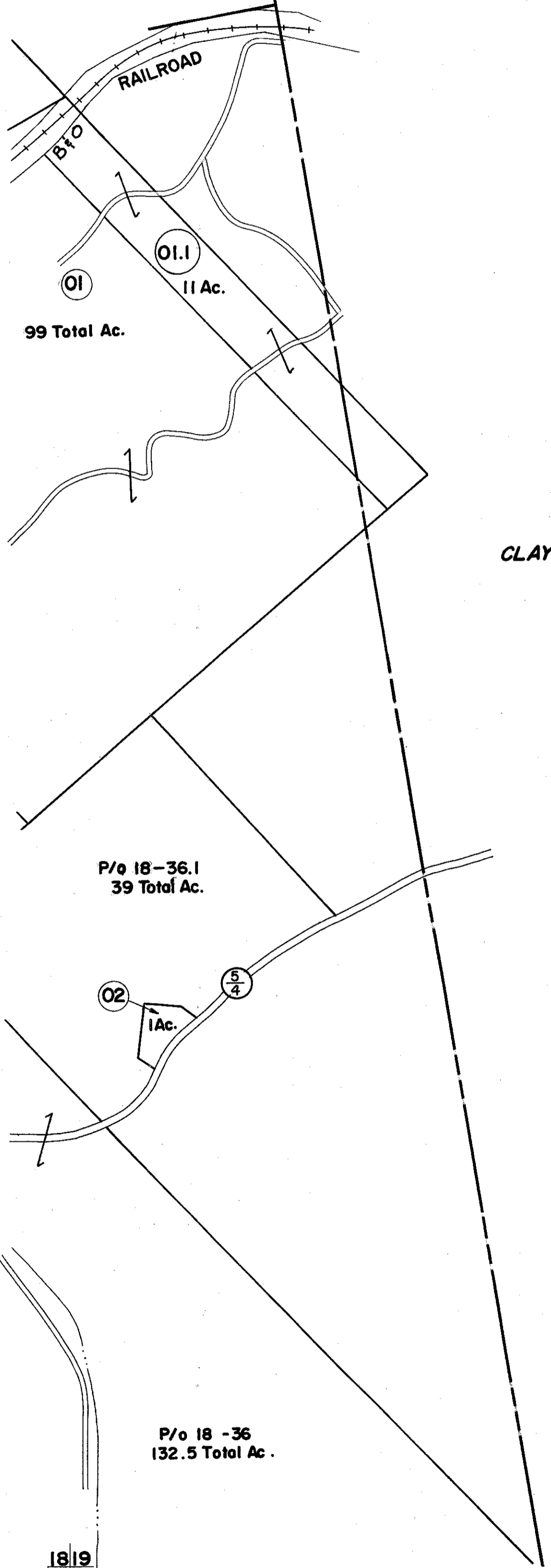


TAXED IN
CLAY DISTRICT



CLAY DISTRICT

FOR TAX PURPOSES ONLY

Prepared by
L. ROBERT KIMBALL
 Consulting Engineer
 Ebensburg, Pennsylvania

| Legend | |
|-----------------------------|----------------------------------|
| Property line | Original lot line |
| Edge of pavement or roadway | Deed lot number in parenthesis |
| Corporation line | Parcel or index number in circle |
| District line | Improvement |
| County line | Railroad |

| Revisions | |
|-----------|--------------------|
| 1 | 5-18-72 JHP |
| 2 | REV. TO 7-1-83 NCS |
| 3 | |
| 4 | |
| 5 | |
| 6 | |
| 7 | |
| 8 | |

STATE OF WEST VIRGINIA
 RITCHIE COUNTY
 Office of Assessor

GRANT DISTRICT
SHEET 19

Date, Aerial Photography: APRIL, 1962 Date, Map: NOV., 1963
 Photo No: 74, 76 Scale: 1" = 400'

156 MATERIAL, A.B. SMITH CO., P.O., PA. 15244-1262