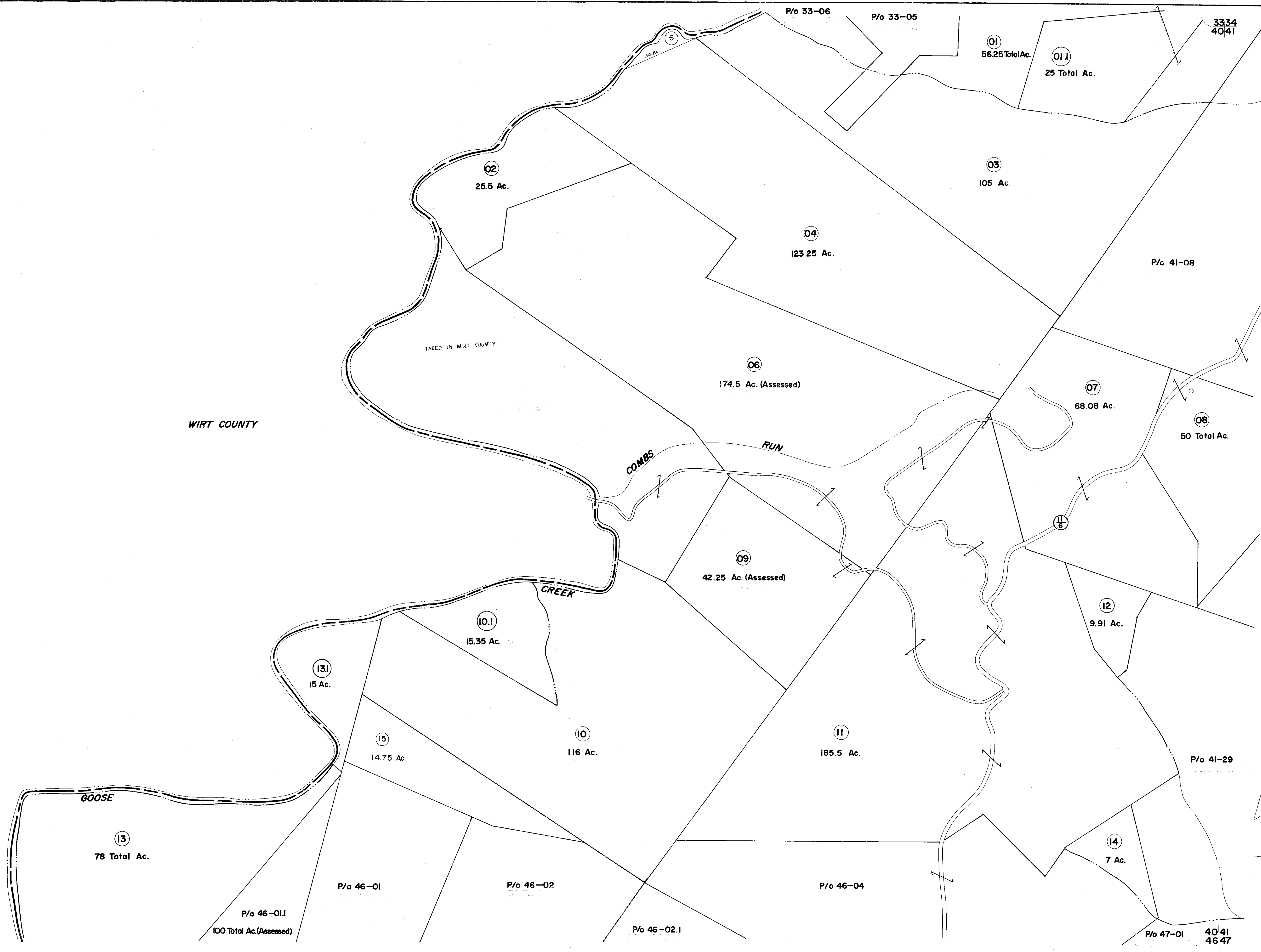


33
40

40
46



FOR TAX PURPOSES ONLY

Prepared by
L. ROBERT KIMBALL
 Consulting Engineer
 Ebensburg, Pennsylvania

Legend

Property line	-----	Original lot line	-----
Edge of pavement or roadway	-----	Deed lot number in parenthesis	(15)
Corporation line	-----	Parcel or index number in circle	⓪
District line	-----	Improvement	○
County line	-----	Railroad	-----

Revisions

1	REVISED 8/5/64	9	
2	1-13-76 DS	10	
3	3-25-80 Nos	11	
4	Revised to 7-1-83	12	
5	SLS INC. 3/10/99 DSW	13	
6		14	
7		15	
8		16	

STATE OF WEST VIRGINIA
 RITCHIE COUNTY
 Office of Assessor

**GRANT DISTRICT
SHEET 40**

Date, Aerial Photography: APRIL, 1962
 Photo No: 13
 Date, Map: NOV, 1963
 Scale: 1" = 400'

150 MAPS, A. & S. SMITH CO., P.O., PA. 17244-1262