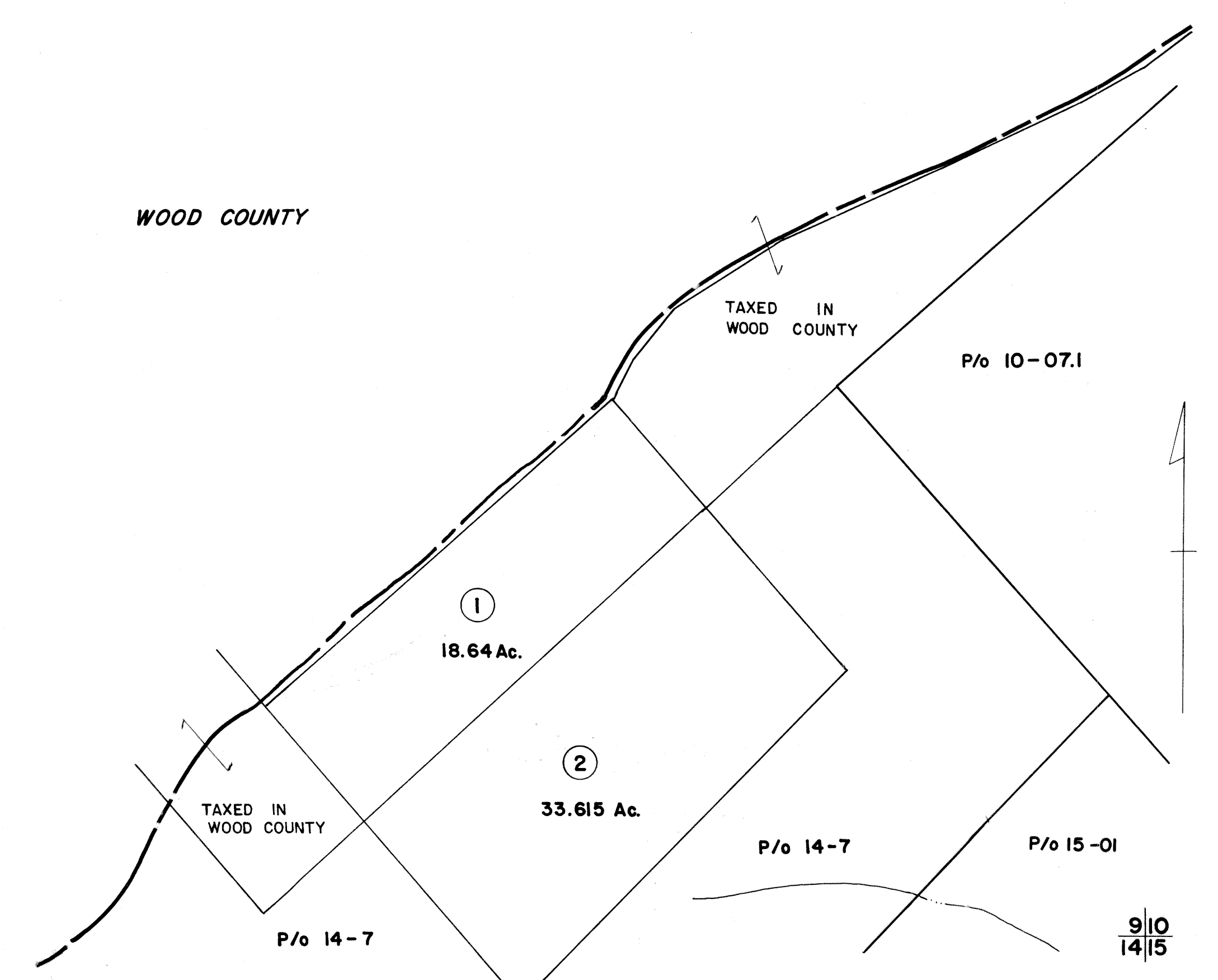


9

5
9/10



9
14

9/10
14/15

FOR TAX PURPOSES ONLY

Prepared by
L. ROBERT KIMBALL
Consulting Engineer
Ebensburg, Pennsylvania

Legend

Property line	Original lot line	(15)
Edge of pavement or roadway	Deed lot number in parenthesis	(15)
Corporation line	Parcel or index number in circle	(15)
District line	Improvement	(15)
County line	Railroad	(15)

Revisions

1	REV. TO 7-1-83	NCS	9	17
2	ESI	4/12/01	REK	10
3				11
4				12
5				13
6				14
7				15
8				16

STATE OF WEST VIRGINIA
RITCHIE COUNTY
Office of Assessor

**GRANT DISTRICT
SHEET 09**

Date, Aerial Photography: APRIL, 1962 Date, Map: NOV, 1963
Photo No: 09 Scale: 1" = 400'

156 IMPERIAL, A. B. SMITH CO., P.O. PA. 17244-1222