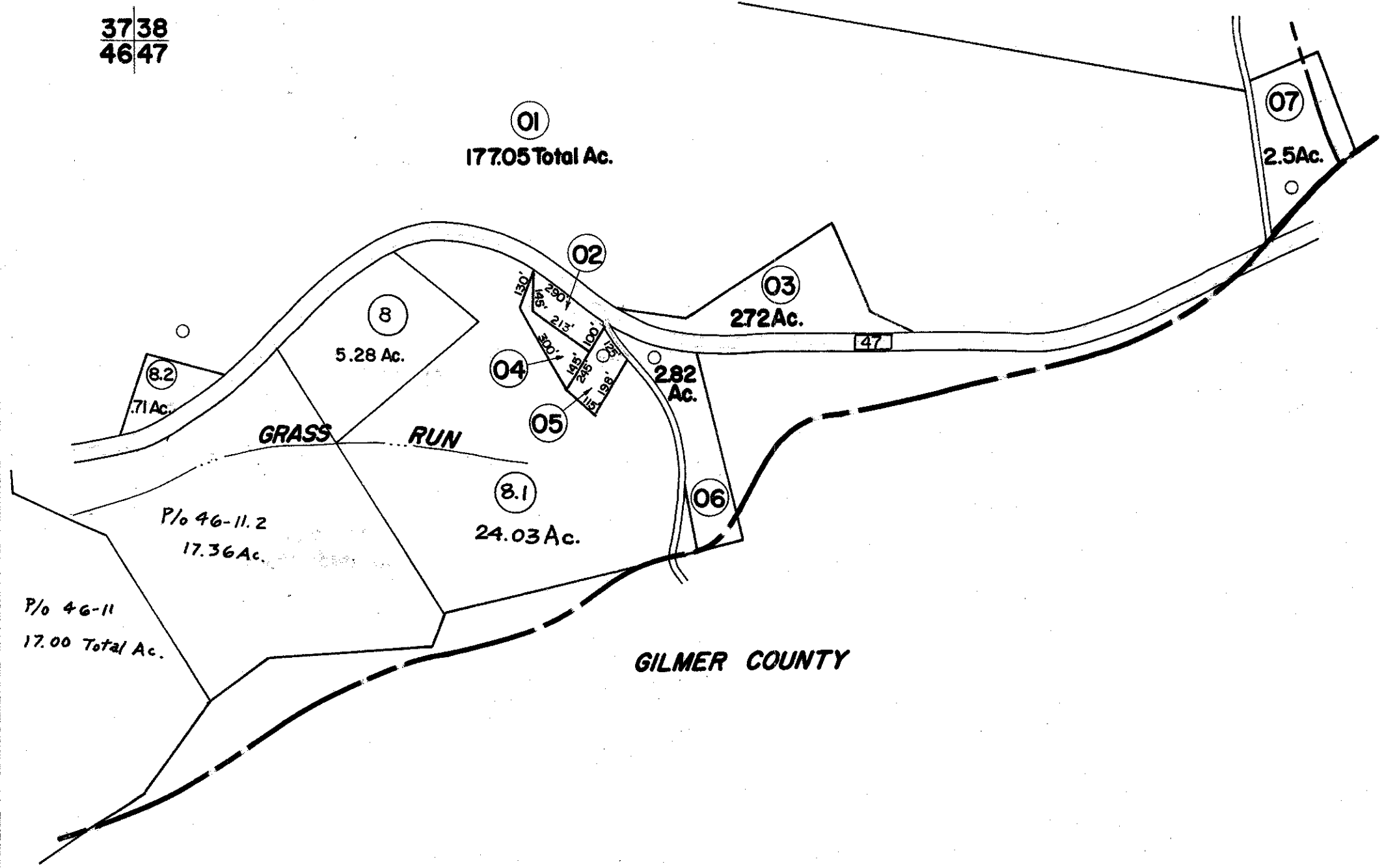


3738  
4647

38  
47



4647  
51

FOR TAX PURPOSES ONLY

Prepared by  
**L. ROBERT KIMBALL**  
Consulting Engineer  
Ebensburg, Pennsylvania

Legend

Property line	-----	Original lot line	.....
Edge of pavement or roadway	-----	Dead lot number in parenthesis	(5)
Corporation line	-----	Parcel or index number in circle	⓪
District line	-----	Improvement	+
County line	-----	Railroad	—+—+—+—

Revisions

No.	Description	Date	By
1	REVISED	8/11/64	JHP
2	5-15-72		DS
3	1-10-76		DS
4	Revised to 7-1-85		DF
5	July, 1985		TR
6			
7			
8			

STATE OF WEST VIRGINIA  
RITCHIE COUNTY

Office of Assessor

MURPHY DISTRICT  
SHEET 47

Date, Aerial Photography: APRIL, 1962 Date, Map: APRIL, 1964  
Photo No: 170 Scale: 1" = 400'