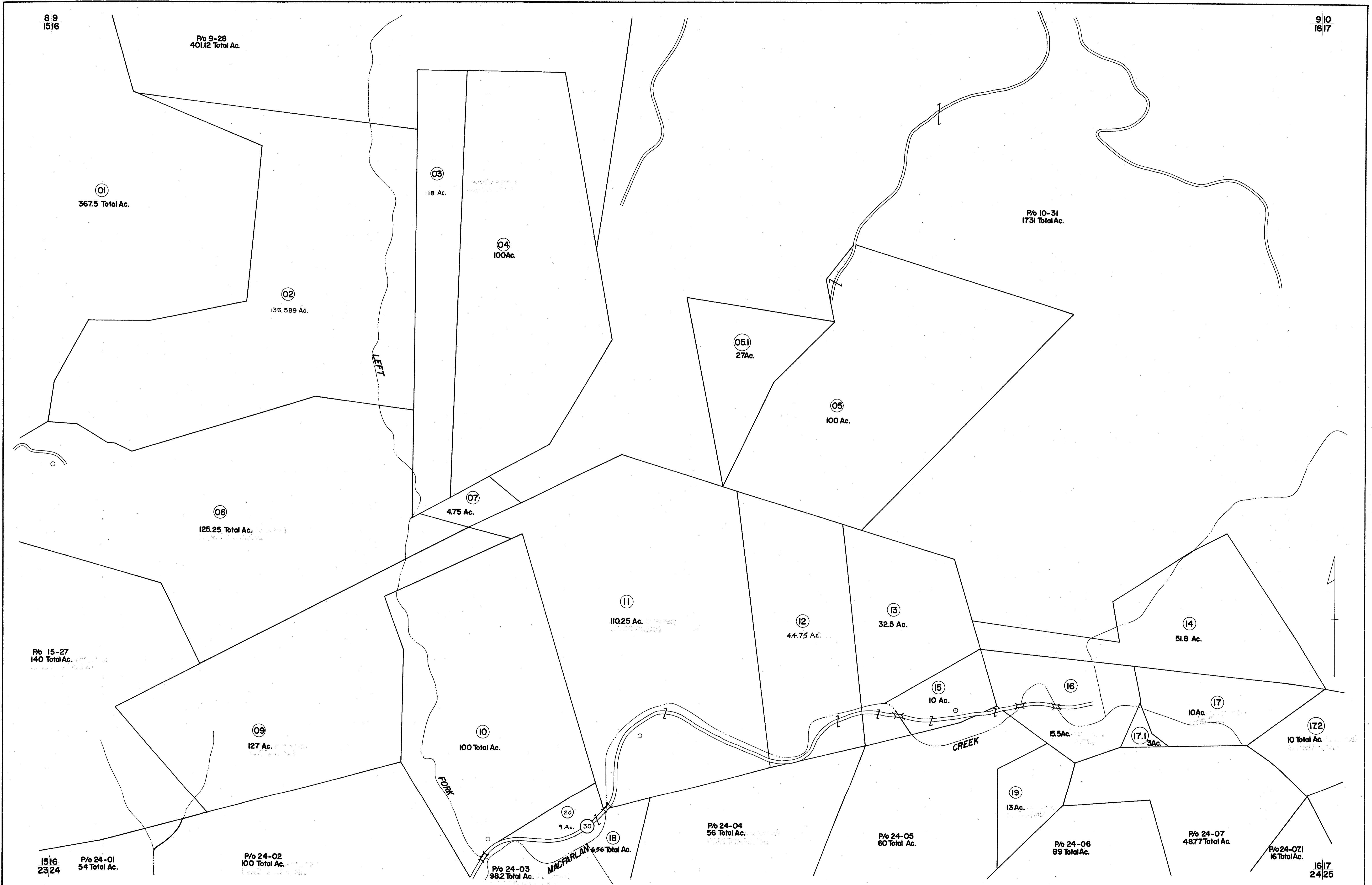


8/9
15/16

9/10
16/17



15/16
23/24

16/17
24/25

FOR TAX PURPOSES ONLY

Prepared by
L. ROBERT KIMBALL
Consulting Engineer
Ebensburg, Pennsylvania

Legend	
Property line	Original lot line
Edge of pavement or roadway	Dead lot number in parenthesis
Corporation line	Parcel or index number in circle
District line	Improvement
County line	Railroad

Revisions	
1	REVISED 8/11/84
2	5-12-72 JHP
3	1-18-76 BH
4	Revised to 7-1-82
5	OGIS 11/21/93 DSH
6	
7	
8	

STATE OF WEST VIRGINIA
RITCHIE COUNTY
Office of Assessor

**MURPHY DISTRICT
SHEET 16**

Date, Aerial Photography: APRIL, 1962 Date, Map: APR, 1964
Photo No: 47 Scale: 1" = 400'

156 IMPERIAL, A.B. SMITH CO., P.O., PA. 15244-1282