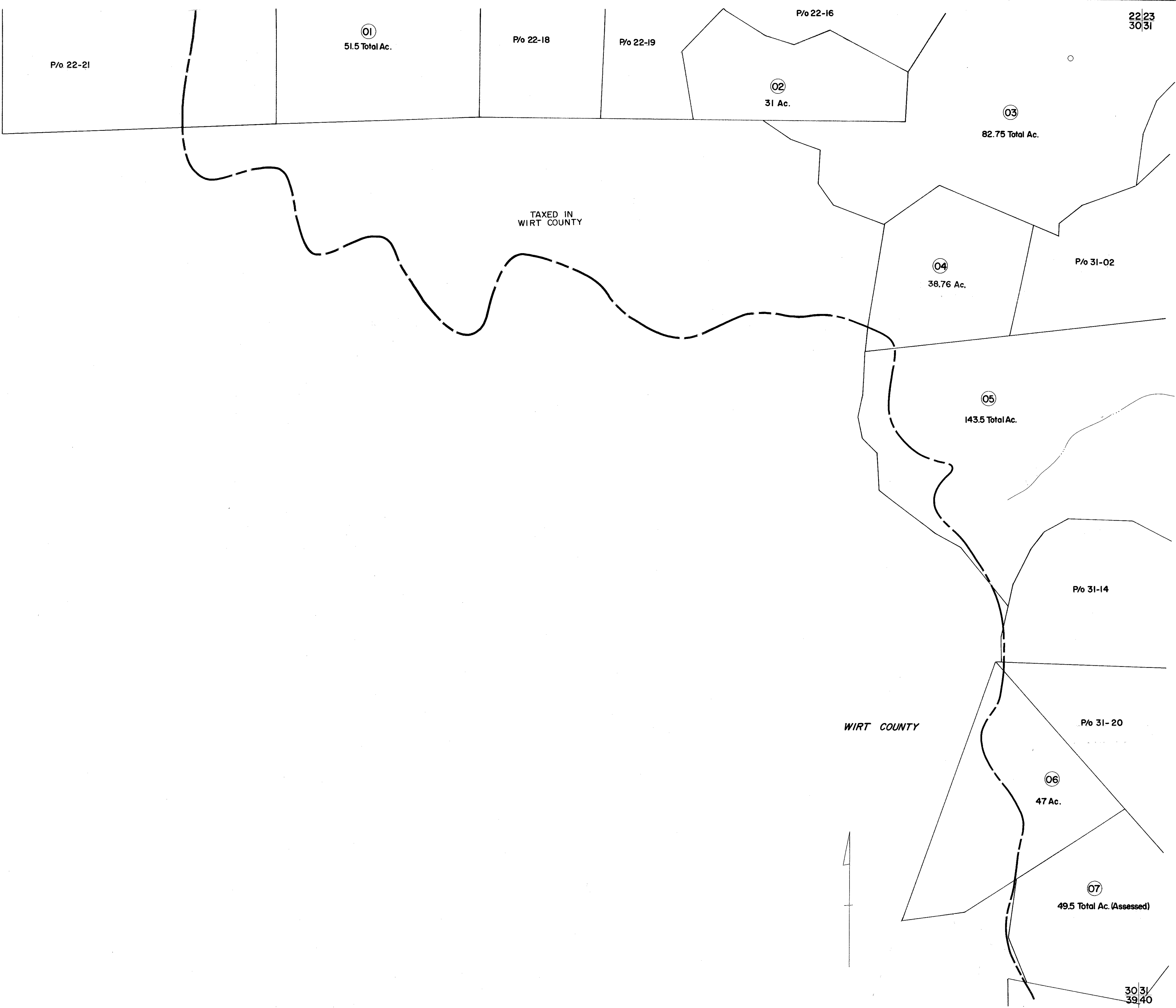


22
30

22/23
30/31



30

30/31
39/40

FOR TAX PURPOSES ONLY

Prepared by
L. ROBERT KIMBALL
 Consulting Engineer
 Ebensburg, Pennsylvania

Legend	
Property line	Original lot line
Edge of pavement or roadway	Deed lot number in parenthesis (15)
Corporation line	Parcel or index number in circle (01)
District line	Improvement
County line	Railroad

Revisions			
1	REVISED 8/11/64	9	17
2	Revised to 7-1-63	10	18
3	SLS INC. 3/9/99 DSW	11	19
4		12	20
5		13	21
6		14	22
7		15	23
8		16	24

STATE OF WEST VIRGINIA
 RITCHIE COUNTY
 Office of Assessor

MURPHY DISTRICT
 SHEET 30

Date, Aerial Photography: APRIL, 1962 Date, Map: APRIL, 1964
 Photo No: 32 Scale: 1" = 400'

154 WHELAN, A. & S. SMITH CO., FGH., PA. 15244-1522