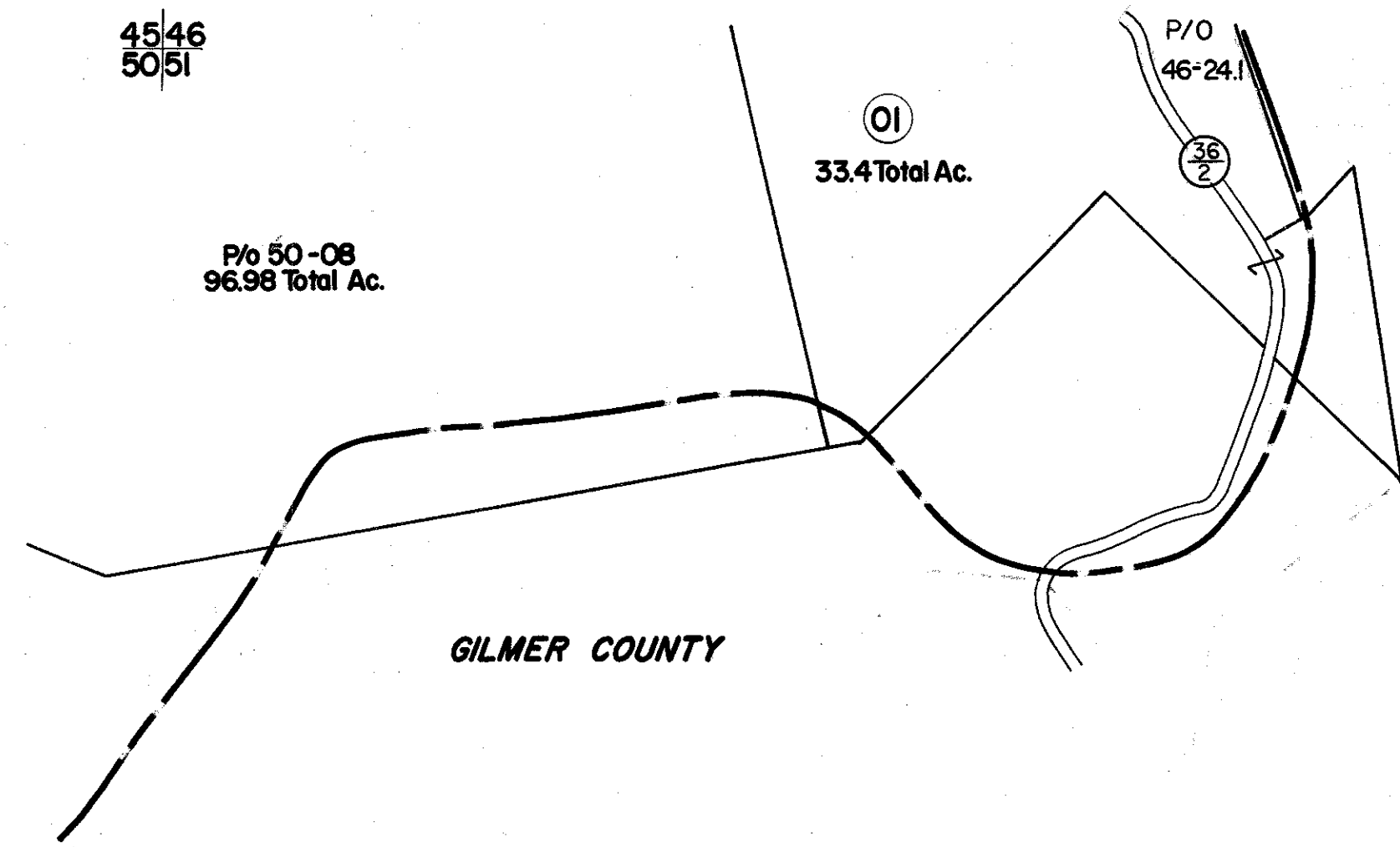


4546  
5051

4647  
51



5051

51

FOR TAX PURPOSES ONLY

Prepared by  
**L. ROBERT KIMBALL**  
Consulting Engineer  
Ebensburg, Pennsylvania

Legend	
Property line	Original lot line
Edge of pavement or roadway	Dead lot number in parenthesis
Corporation line	Parcel or index number in circle
District line	Improvement
County line	Railroad

Revisions			
1	Revised to 7-1-63	2	17
2		3	18
3		4	19
4		5	20
5		6	21
6		7	22
7		8	23
8		9	24

STATE OF WEST VIRGINIA  
RITCHIE COUNTY  
Office of Assessor

MURPHY DISTRICT  
SHEET 51

Date, Aerial Photography: APRIL, 1962 Date, Map: APRIL, 1964  
Photo No: 149 Scale: 1" = 400'