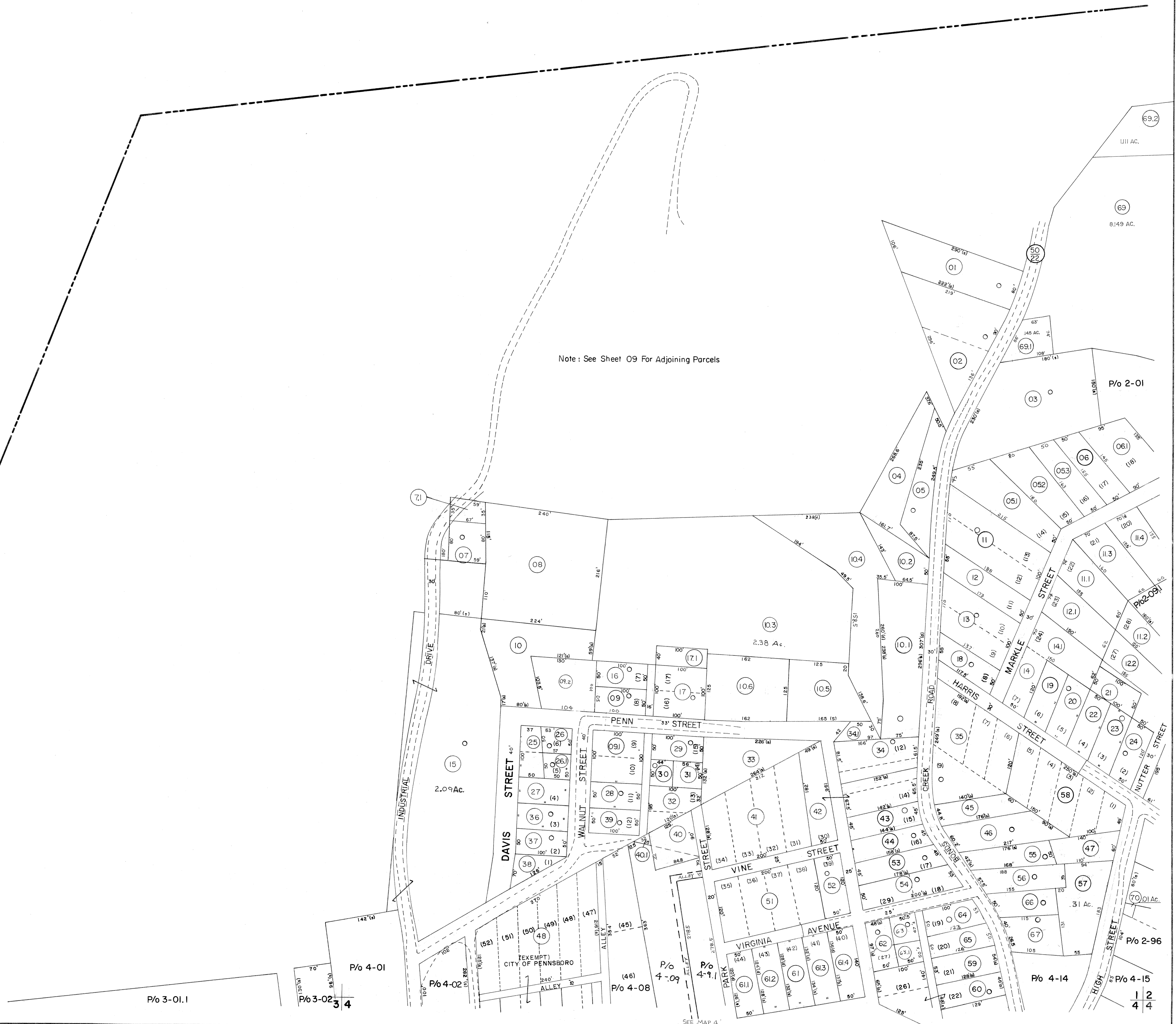


CLAY DISTRICT

Note: See Sheet 09 For Adjoining Parcels



FOR TAX PURPOSES ONLY

Prepared by
L. ROBERT KIMBALL
 Consulting Engineer
 Ebensburg, Pennsylvania

Legend	
Property line	—
Edge of pavement or roadway	- - - - -
Corporation line
District line
County line
Original lot line
Deed lot number in parenthesis	(15)
Parcel or index number in circle	(99)
Improvement	○
Railroad	+

Revisions					
1	REVISED 8/3/64	7	July, 1967	TRL	17
2	5-10-72	8	Revised to 7-1-88	JHP	18
3	1-12-76	9	SLS INC 1/14/98	T.G.	19
4	4-25-77	10	SLS INC. 3/3/99	SRJ	20
5	3-21-80	11	SLS INC. 2/16/00	MOS	21
6	Revised to 7-1-88	12	ESI 2/20/02	JAS	22
7	Revised to 7-1-88	13		ES1	23
8	Revised to 7-1-86	14			24

STATE OF WEST VIRGINIA
 COUNTY OF RITCHIE
 Office of Assessor

PENNSBORO CORPORATION
SHEET 01

Date, Aerial Photography: APRIL, 1962 Date, Map: DEC., 1962
 Photo No: 12 Scale: 1" = 100'