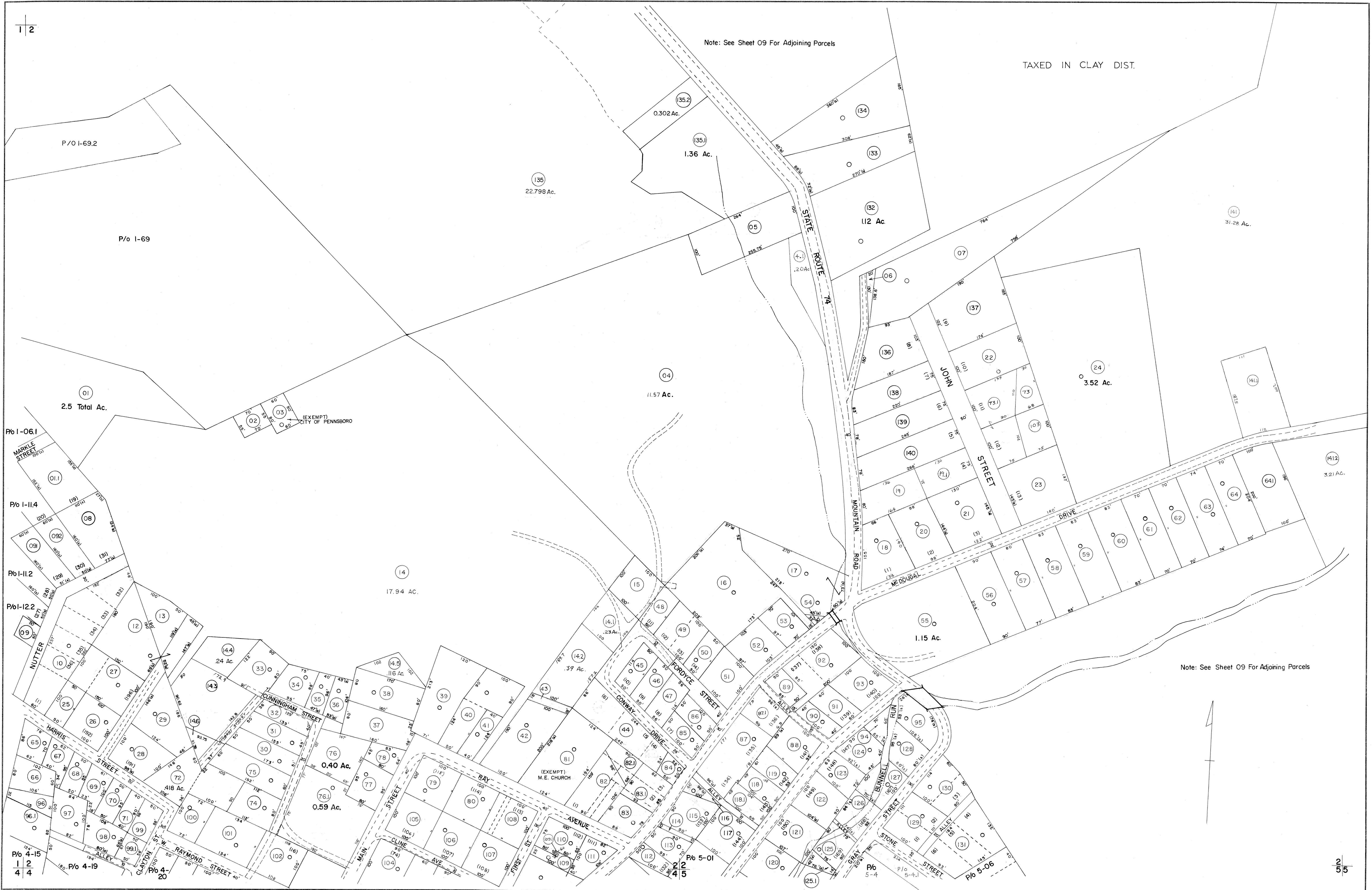


Note: See Sheet 09 For Adjoining Parcels

TAXED IN CLAY DIST.



Note: See Sheet 09 For Adjoining Parcels

FOR TAX PURPOSES ONLY

Prepared by  
**L. ROBERT KIMBALL**  
 Consulting Engineer  
 Ebensburg, Pennsylvania

Legend	
Property line	Original lot line
Edge of pavement or roadway	Deed lot number in parenthesis (15)
Corporation line	Parcel or index number in circle (9)
District line	Improvement
County line	Railroad

Revisions	
1 REVISED 8/3/64	9 July, 1987 TRL
2 5-10-72 JHP	10 Revised to 7-1-88
3 1-13-76 T.G.	11 Revised to 7-1-89
4 6-18-76 D.S.	12 OGIS 11/20/93 DSH
5 4-25-77 SFRJ	13 SLS INC 1/14/98 JWM
6 3-21-83	14 SLS INC. 3/3/99 DSW
7 Revised to 7-1-89	15 ESI 2/20/02 REK
8 REV. TO 7-1-84 NCS	16 4/11/04 S.B.H

STATE OF WEST VIRGINIA  
 COUNTY OF RITCHIE  
 Office of Assessor

**PENNSBORO CORPORATION**  
**SHEET 02**

Date, Aerial Photography: APRIL, 1962 Date, Map: DEC, 1962  
 Photo No: 09:12 Scale: 1"=100'