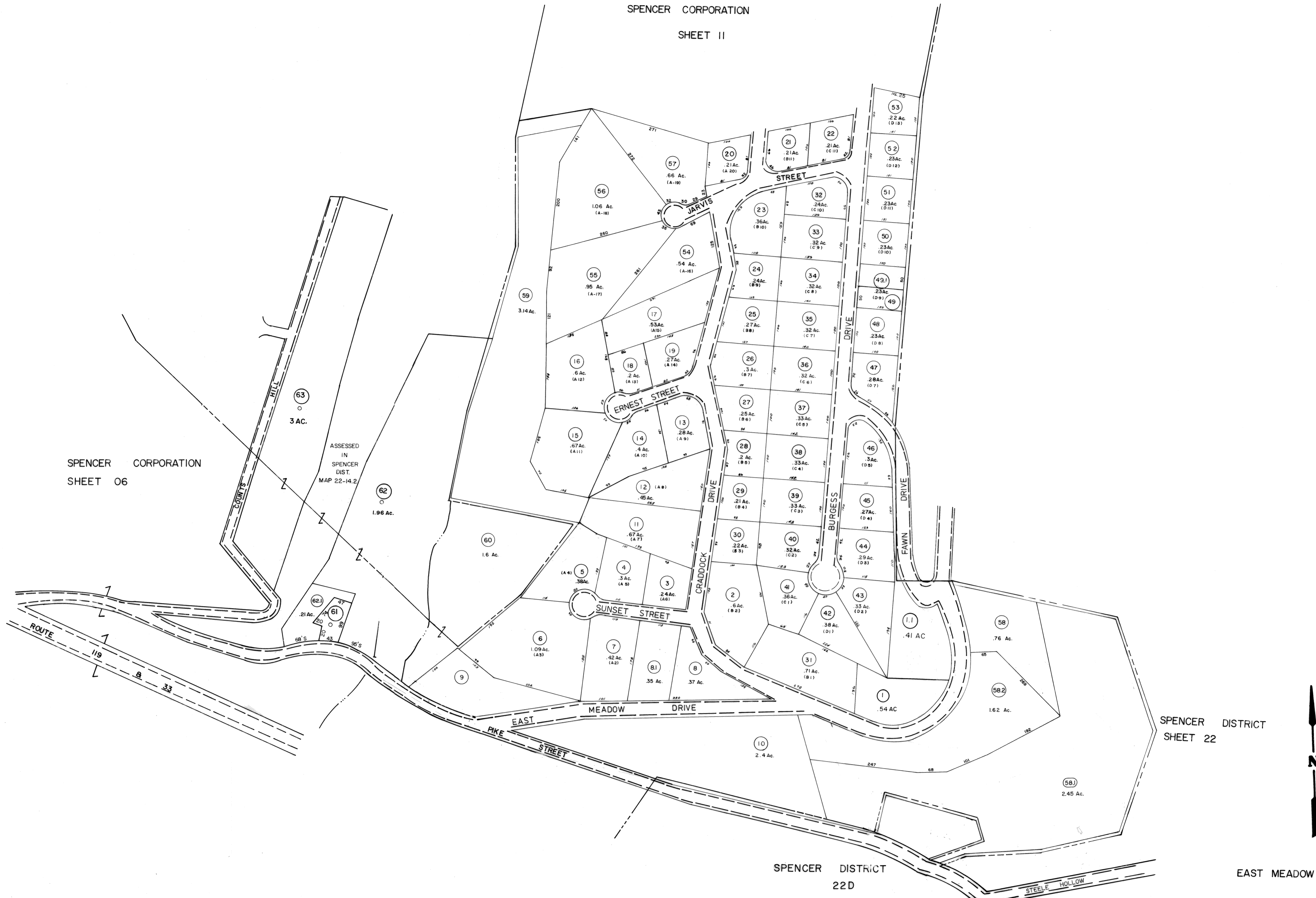


SPENCER CORPORATION
SHEET 11



SPENCER CORPORATION
SHEET 06

ASSESSED
IN
SPENCER DIST.
MAP 22-14.2

SPENCER DISTRICT
SHEET 22

SPENCER DISTRICT
22D

EAST MEADOW



For Tax Purposes Only

Prepared by
LOCAL GOVERNMENT RELATIONS DIV.
STATE TAX COMMISSIONER
CHARLESTON, W.VA.

LEGEND

Property line	-----	Original lot line	-----
Edge of pavement or roadway	-----	Deed lot number	(15)
Corporation line	-----	Parcel or index number	99
District line	-----	Improvement	o
County line	-----	Railroad	-----

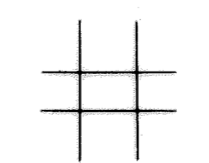
REVISIONS

1	New Map 12-18-80	SBH
2	REV. TO 7-1-82	NCS
3	TO 7-1-84 C.P.	
4	TO 8-24-88	TLB
5	EXCALIBUR GRAPHICS 7/93	
6	2/20/2000	SBH
7	3/31/2001	SBH
8	3/17/2002	SBH
6/22/05		SBH

RESTRICTION

All tax maps created under the provisions of reappraisal legislation are the property of the State of West Virginia and the reproduction, copying, distribution or sale of such tax maps or any copies thereof without the written permission of the State Tax Commissioner is prohibited by law.

KEY MAP



STATE OF WEST VIRGINIA
COUNTY OF ROANE
Office of Assessor

SPENCER CORPORATION
SHEET 10

Date, Aerial Photography: _____
Photo No: _____
Date, Map: 10-80
Scale: 1 = 100