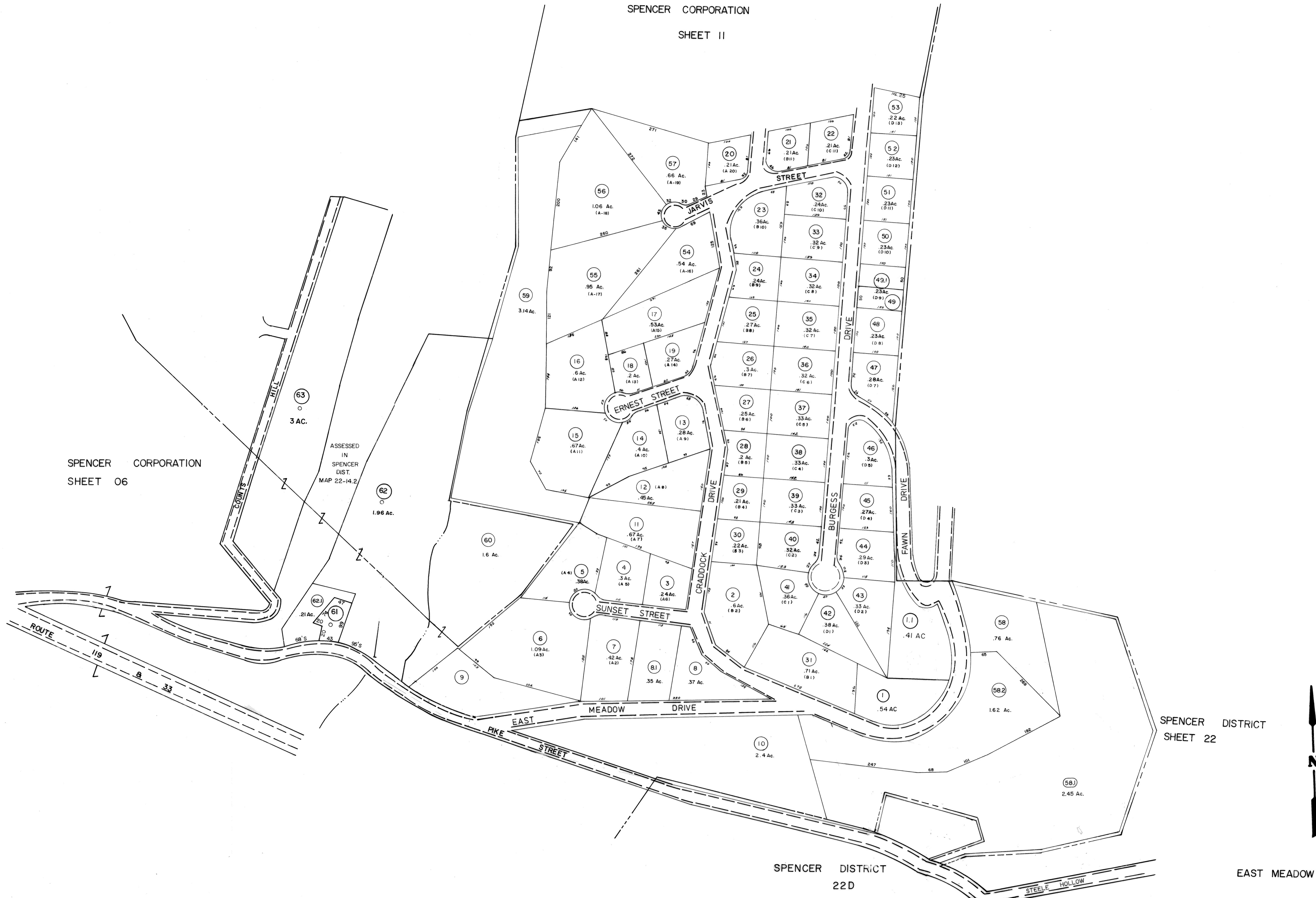


SPENCER CORPORATION
SHEET II



SPENCER CORPORATION
SHEET 06

SPENCER DISTRICT
SHEET 22

SPENCER DISTRICT
22D

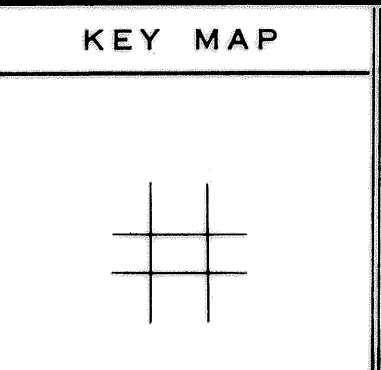
EAST MEADOW

For Tax Purposes Only
Prepared by
LOCAL GOVERNMENT RELATIONS DIV.
STATE TAX COMMISSIONER
CHARLESTON, W.VA.

LEGEND	
Property line	Original lot line
Edge of pavement or roadway	Deed lot number
Corporation line	Parcel or index number
District line	Improvement
County line	Railroad

REVISIONS	
1	New Map 12-18-80
2	REV. TO 7-1-82 NCS
3	To 7-1-84 C.P.
4	TO 8-24-88 TLB
5	EXCALIBUR GRAPHICS 7/93
6	2/20/2000 SBH
7	3/31/2001 SBH
8	3/17/2002 SBH
6/22/05 SBH	

RESTRICTION
All tax maps created under the provisions of reappraisal legislation are the property of the State of West Virginia and the reproduction, copying, distribution or sale of such tax maps or any copies thereof without the written permission of the State Tax Commissioner is prohibited by law.



STATE OF WEST VIRGINIA
COUNTY OF ROANE
Office of Assessor

SPENCER CORPORATION
SHEET 10

Date, Aerial Photography: Photo No:
Date, Map: 10-80
Scale: 1 = 100