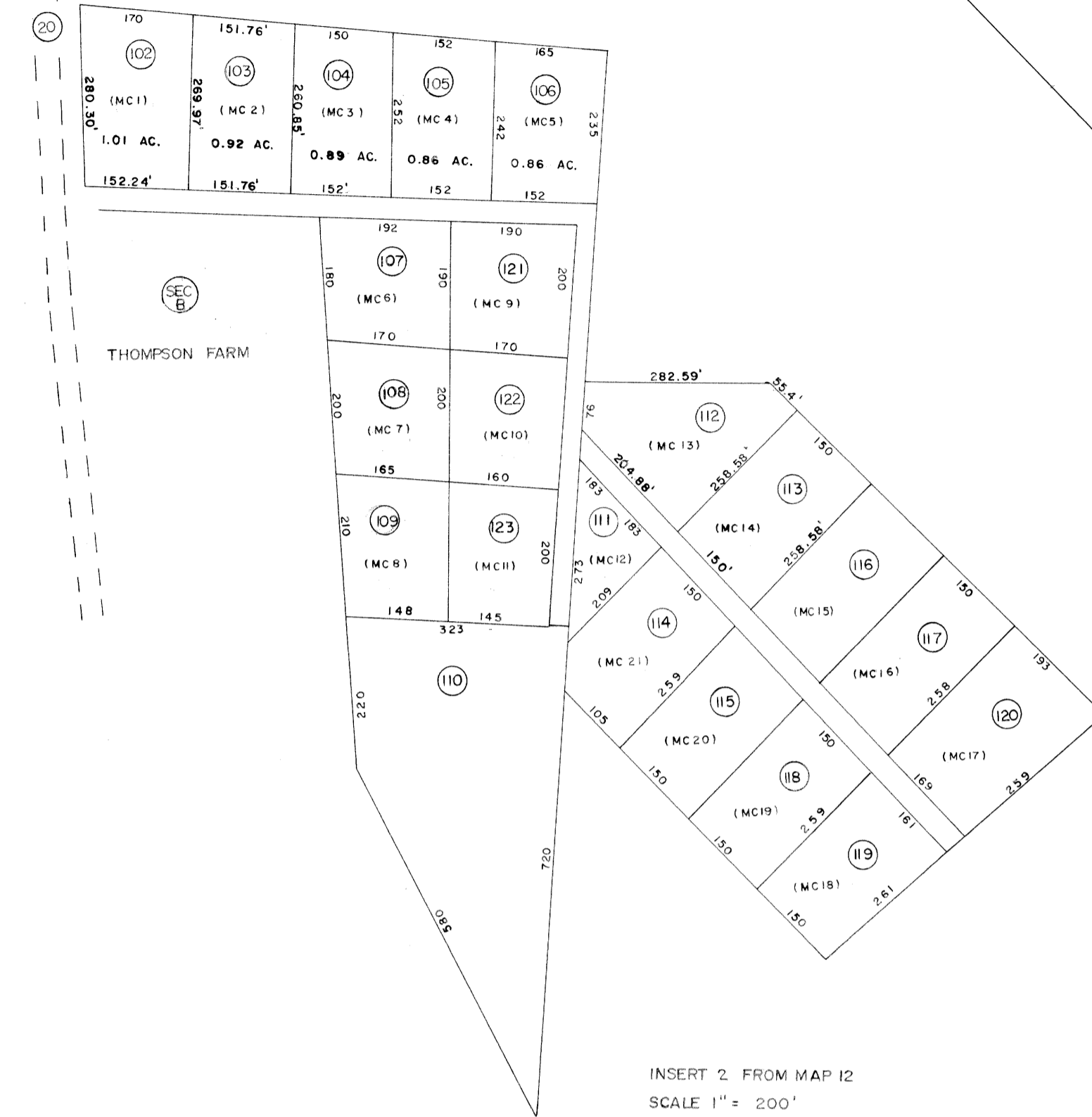
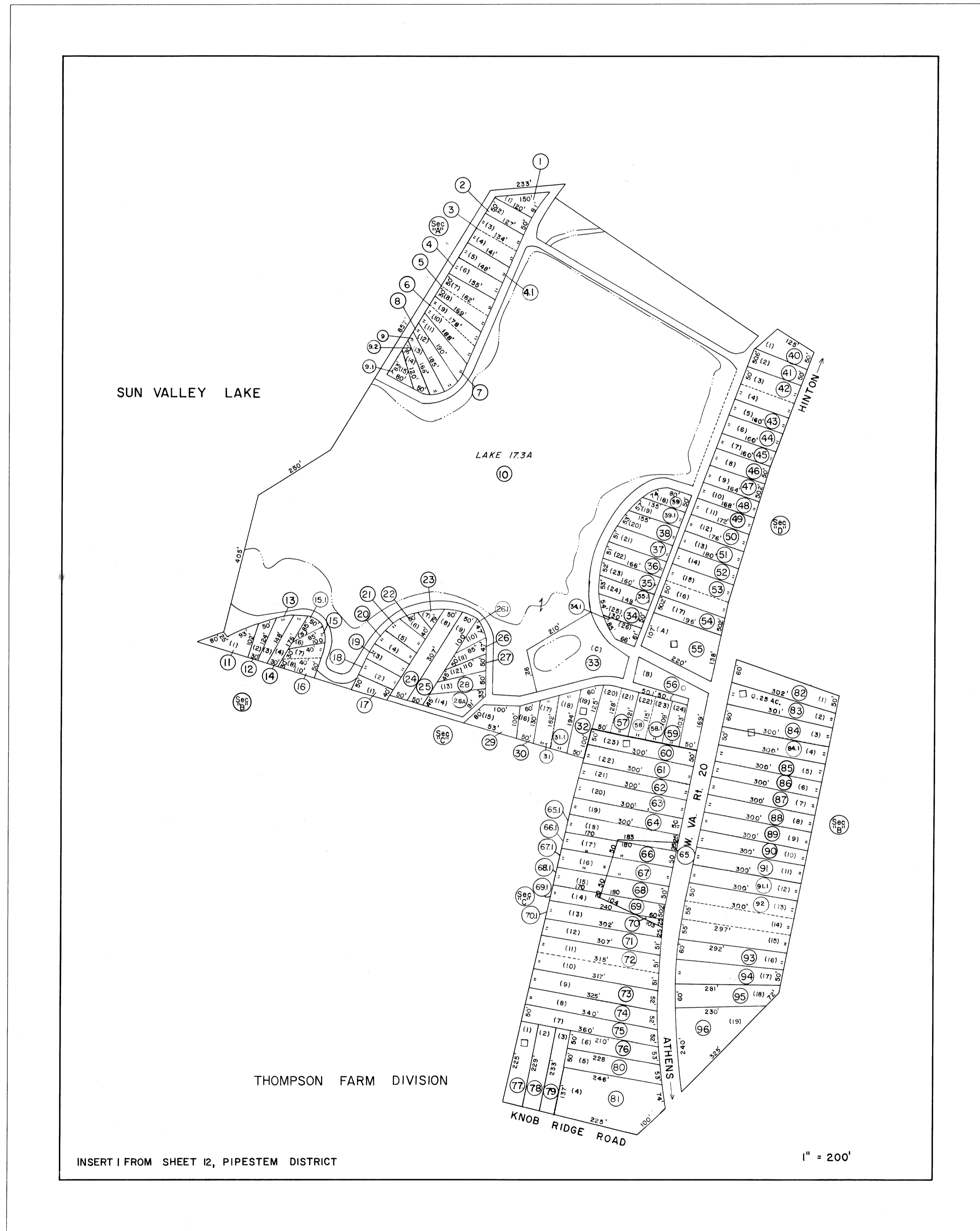
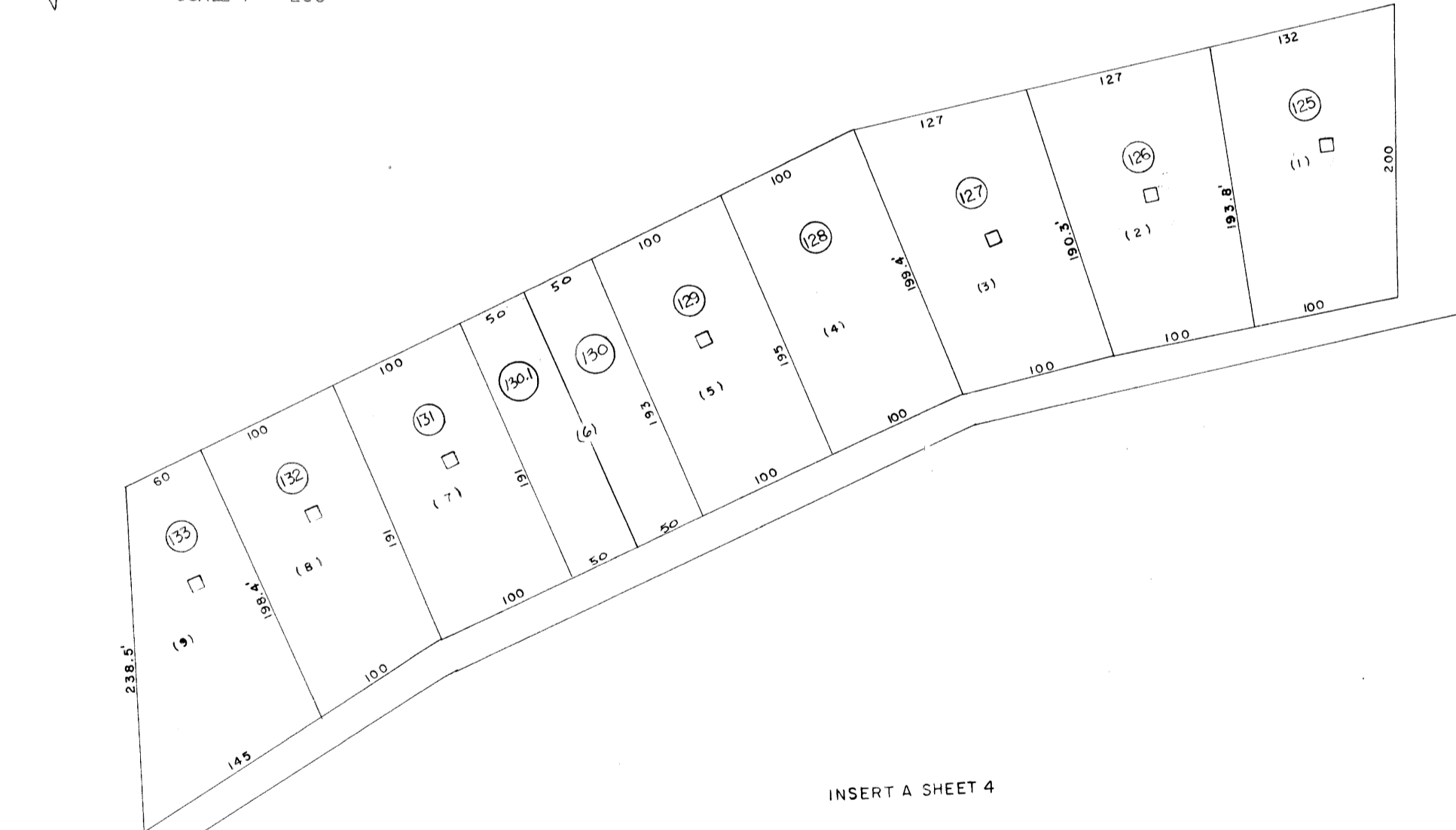


EXEMPT - STATE OF WEST VIRGINIA
SEE SHEET 11

SUMMERS COUNTY
MERCER COUNTY



INSERT 2 FROM MAP 12
SCALE 1" = 200'



INSERT A SHEET 4
SCALE 1" = 100'

For Tax Purposes Only

Prepared by
AIR SURVEY CORPORATION
1101 Lee Highway Arlington 9, Virginia

Legend

Property line	—————	Original lot line	-----
Edge of pavement or roadway	- - - - -	Deed lot number in parentheses	(15)
Corporation line	- · - · -	Parcel or index number in circle	②
District line	- - - - -	Improvement	○
County line	- · - · -	Railroad	+

Revisions

1	Rodgers - April, - 1962	9
2	11 SEPT 72 T.M	10
3	7-17-75 SC	11
4	5-78 P.W.	12
5	1-26-84 B & A	13
6	3-28-84	14
7	5/25/84	15
8		16
		17
		18
		19
		20
		21
		22
		23
		24

SUMMERS COUNTY ~ WEST VIRGINIA
Office of Assessor

PIPESTEM DISTRICT

City - Town - District:
15
Map No:
Date, Aerial Photography: APRIL 1959 Date, Map: JAN. 1960
Photo No: 4(02), 5(02) Scale: 1" = 400'