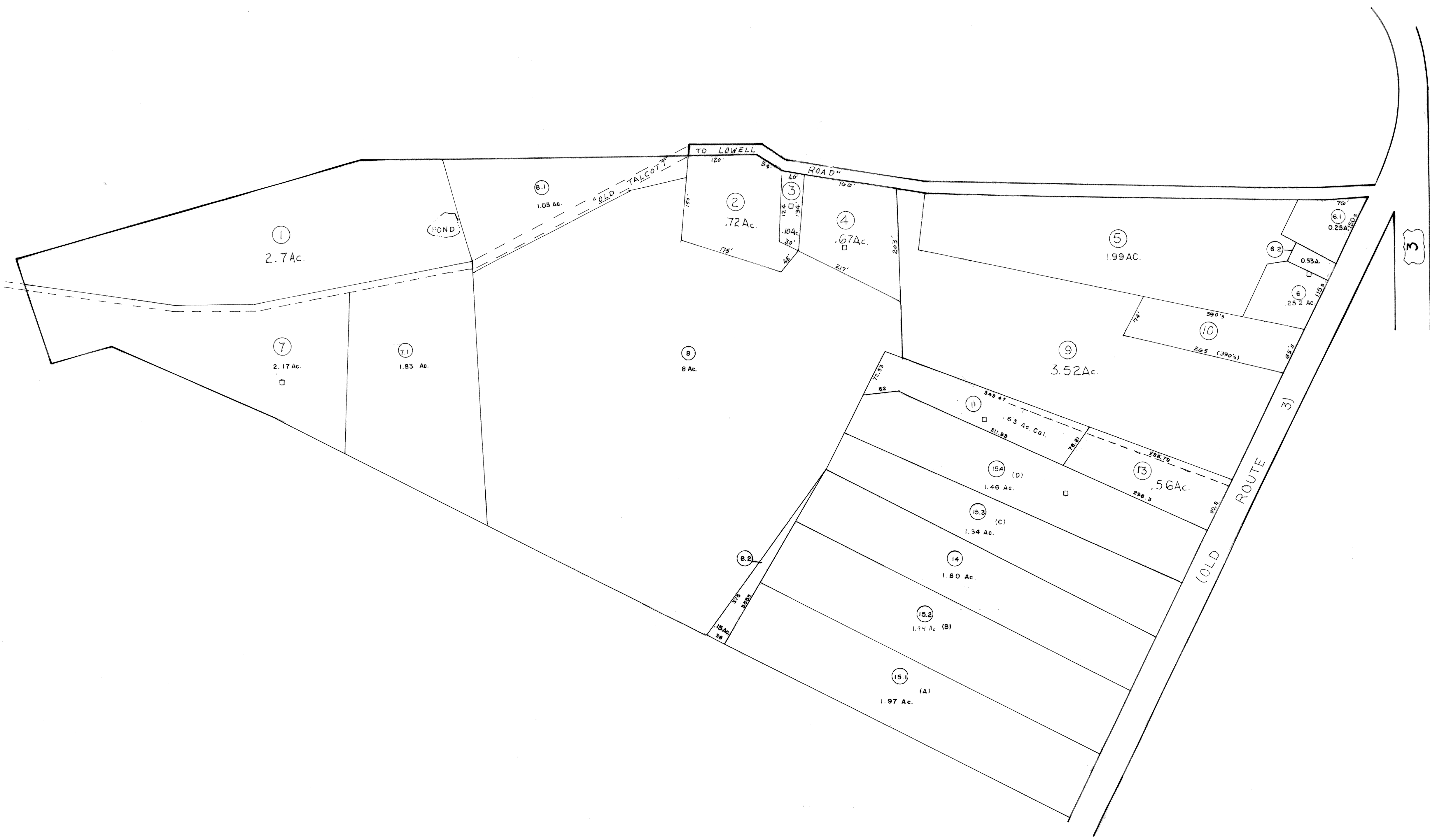


19

19

19



19

**For Tax Purposes Only**

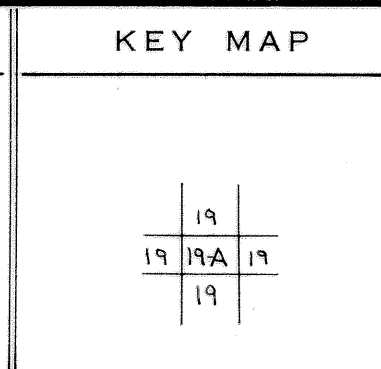
Prepared by  
LOCAL GOVERNMENT RELATIONS DIV.  
STATE TAX COMMISSIONER  
CHARLESTON, W.VA.

LEGEND	
Property line	—
Edge of pavement or roadway	- - - -
Corporation line	- · - · -
District line	- - - -
County line	- - - -
Original lot line	(15)
Deed lot number	⊙
Parcel or index number	⊙
Improvement	○
Railroad	—+—+—+—

REVISIONS	
1	6-13-78 BAW
2	6-23-84 BBA
3	To 7-1-84 C.P.
4	Revised to 7-1-87
5	7-25-88
6	11-24-88
7	
8	

**RESTRICTION**

All tax maps created under the provisions of reappraisal legislation are the property of the State of West Virginia and the reproduction, copying, distribution or sale of such tax maps or any copies thereof without the written permission of the State Tax Commissioner is prohibited by law.



**COUNTY of SUMMERS**

Office of Assessor  
HINTON, W. VA.

**TALCOTT DISTRICT**

**MAP 19A**

Date, Aerial Photography: Photo No:  
Date, Map: 11-8-77  
Scale: 1" = 100'