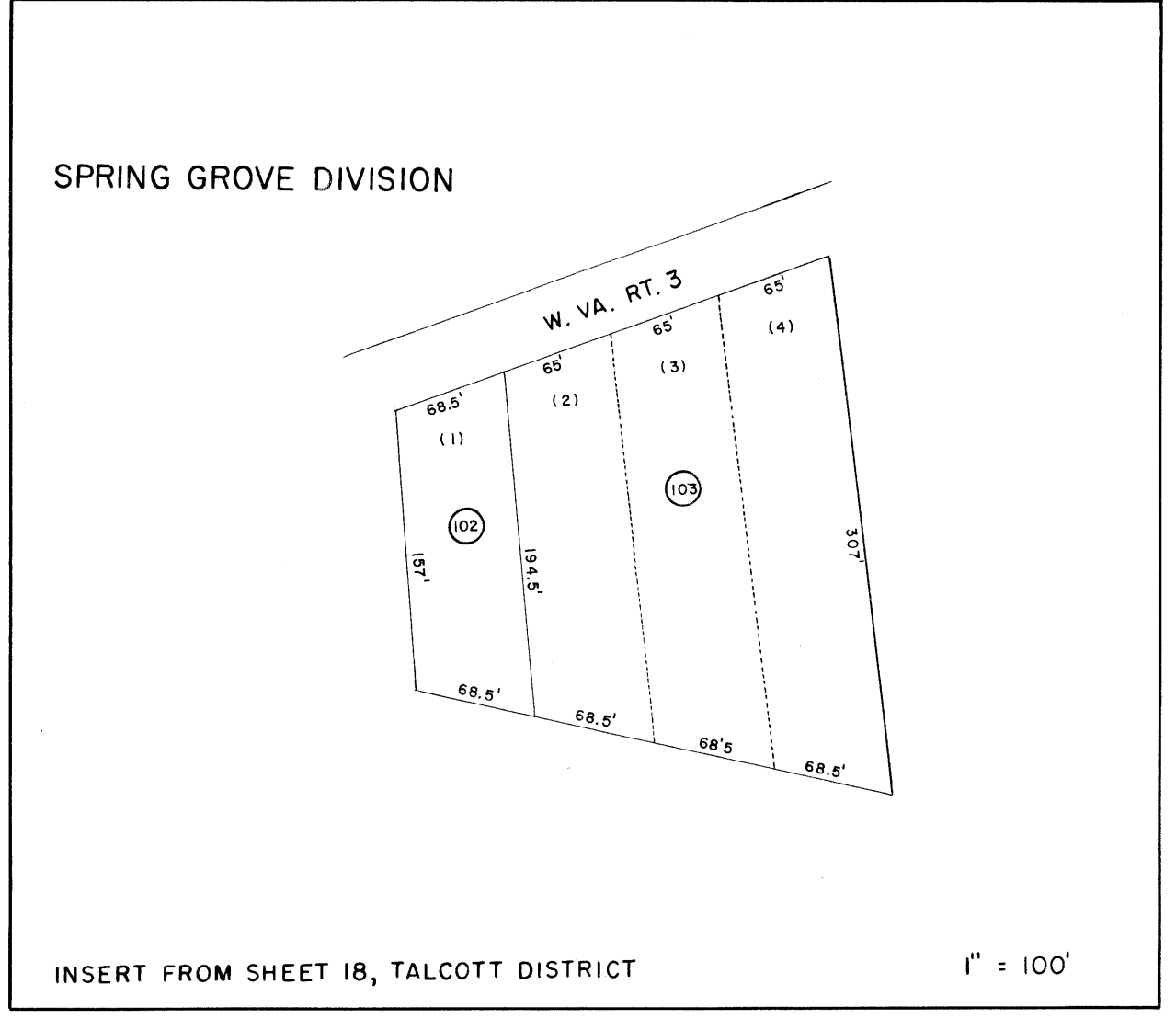
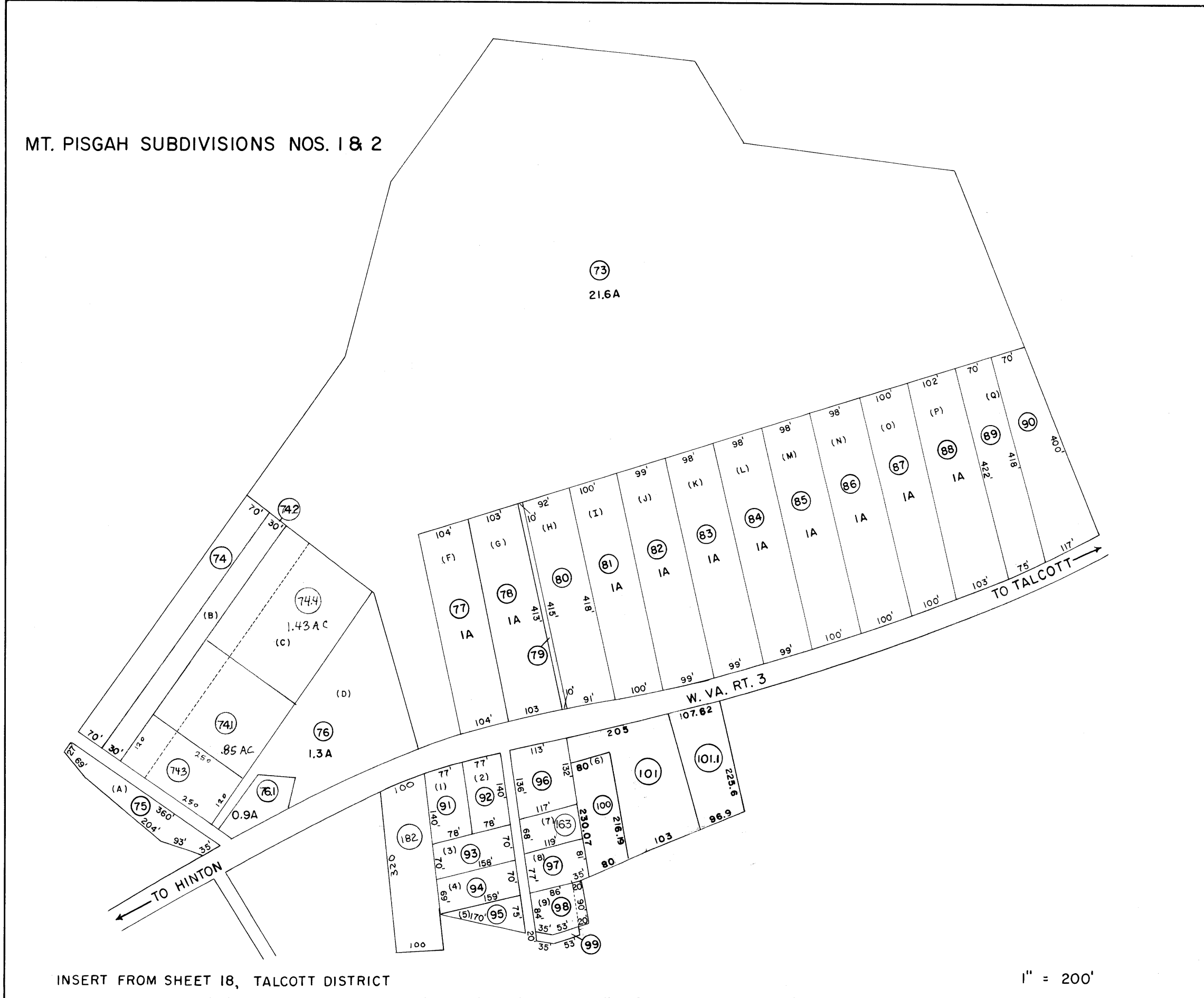
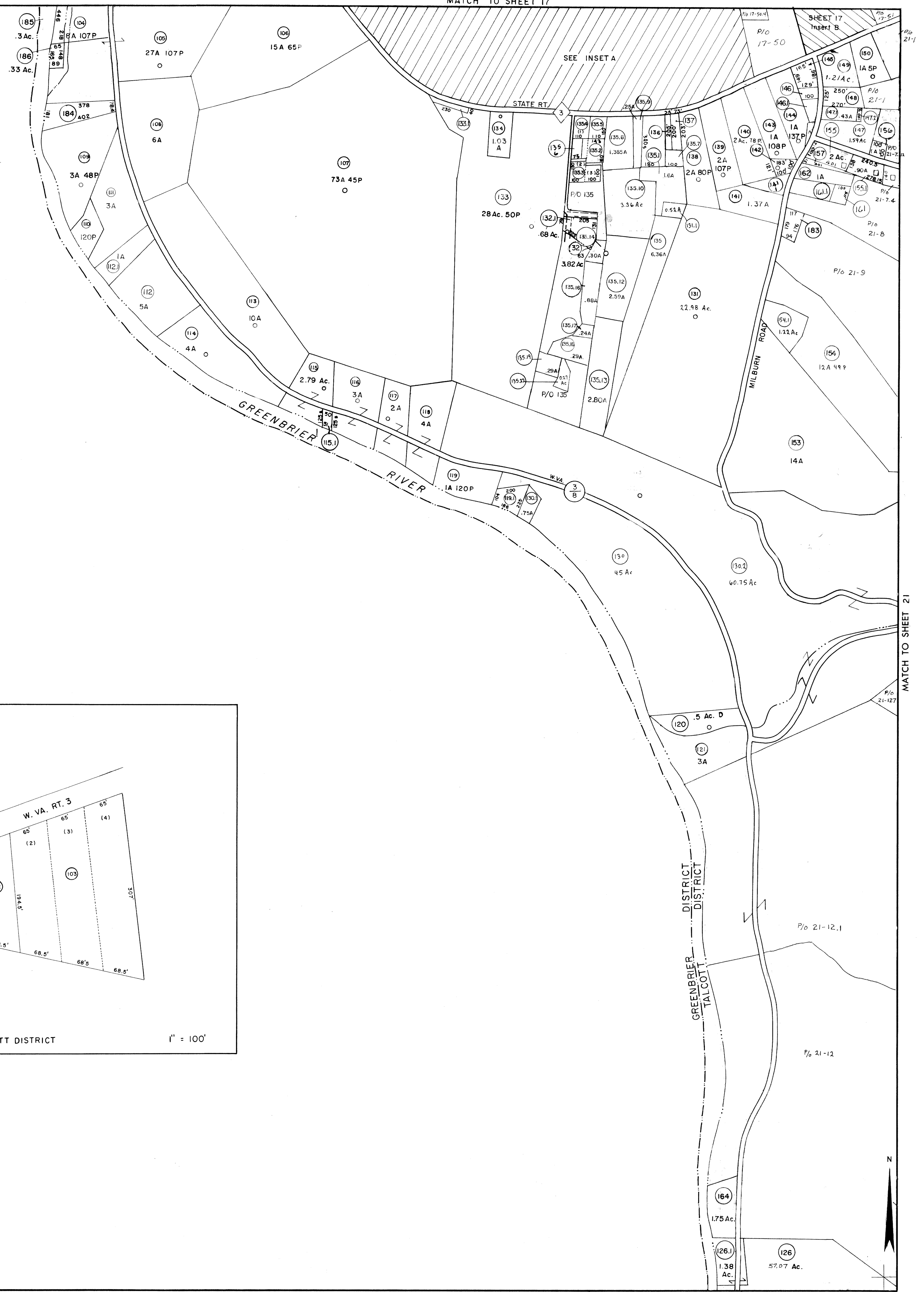
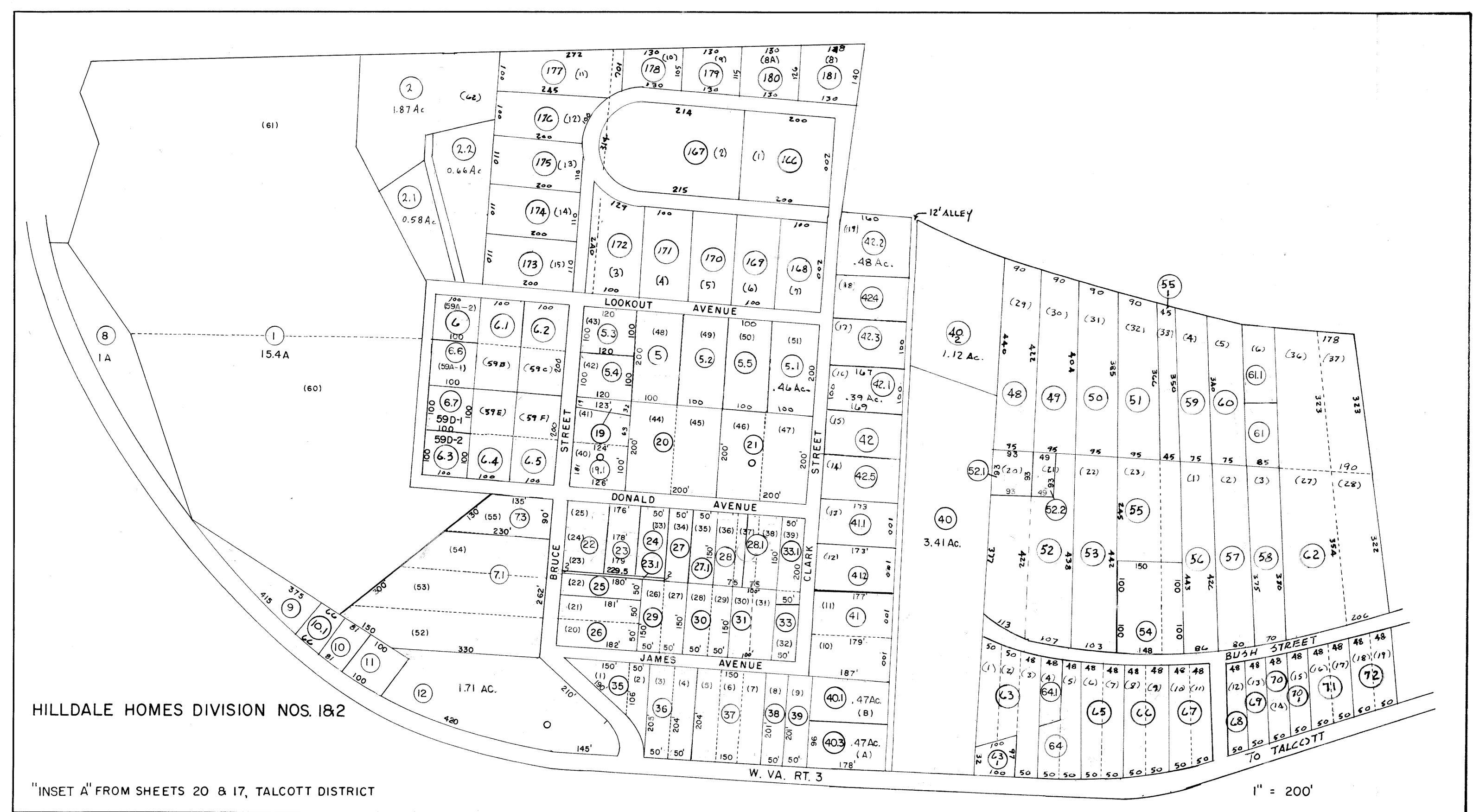


MATCH TO SHEET 17



MATCH TO SHEET 23

For Tax Purposes Only

Prepared by
AIR SURVEY CORPORATION
1101 Lee Highway Arlington 9, Virginia

Legend	
Property line	Original lot line
Edge of pavement or roadway	Deed lot number in parentheses (15)
Corporation line	Parcel or index number in circle (99)
District line	Improvement
County line	Railroad

Revisions	
1	Rodgers - Feb., 1962
2	5 SEPT 72 T.M.
3	9-24-75 J.C.
4	8-20-76 D.S.
5	6-12-78 B.A.H.
6	6-25-84 B.S.A.
7	To 7-1-84 C.P.
8	Revised to 7-1-87 J.F.

SUMMERS COUNTY ~ WEST VIRGINIA
Office of Assessor

TALCOTT DISTRICT
City - Town - District:
20
Map No.:
Date, Aerial Photography: APRIL 1959 Date, Map: DEC. 1959
Photo No.: 6 (09) 6 (10) 7 (09) 7 (10) Scale: 1" = 400'